

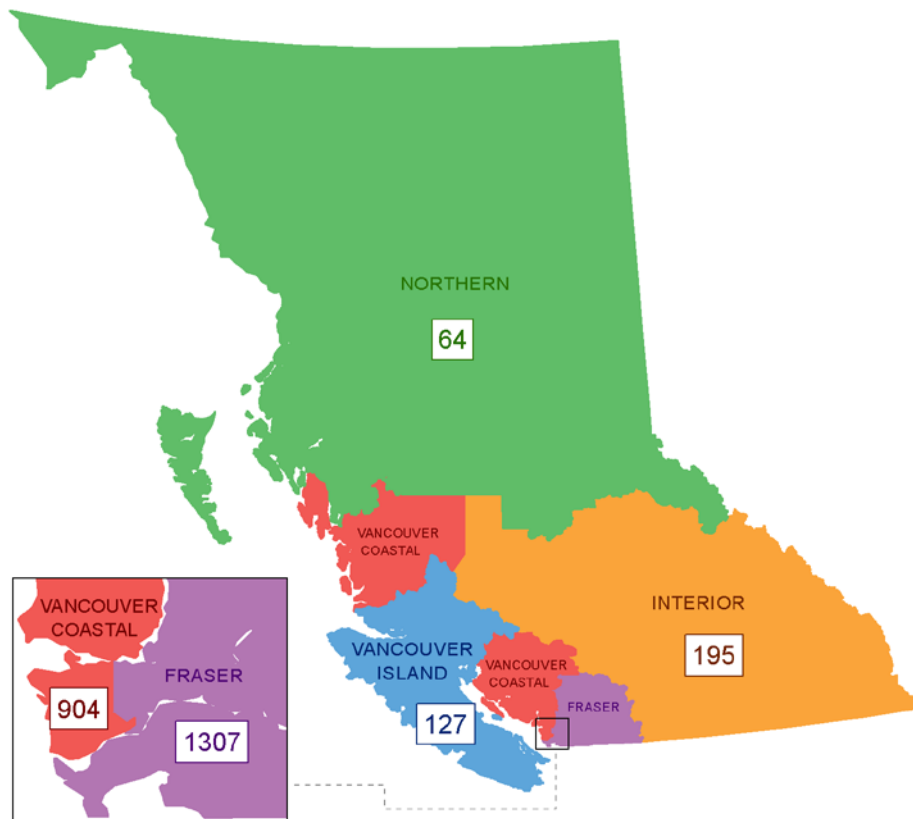
## British Columbia COVID-19 Daily Situation Report, June 1, 2020\*

### Key Findings

COVID-19 risk in BC is currently very low.

- Most regions, except FHA, have reported very few cases in recent weeks (Table 1, Fig 3).
- The vast majority of recent cases had a known source of infection or are still under investigation (Fig 4).
- The proportion of people who tested positive remains low (Fig 6).
- The number of reported cases among children remains low, few required hospitalization and none have died (Table 3, Fig 7).
- No new outbreaks were reported over the weekend (Fig 9, Table 4).
- Very few new hospitalisations have been reported in the last week (Fig 5).
- The number of cases in hospital and critical care is low and stable (Fig 10-11).

**Figure 1:** Map of COVID-19 cases reported by health authority, BC, January 1 – June 1, 2020 (N=2,597)



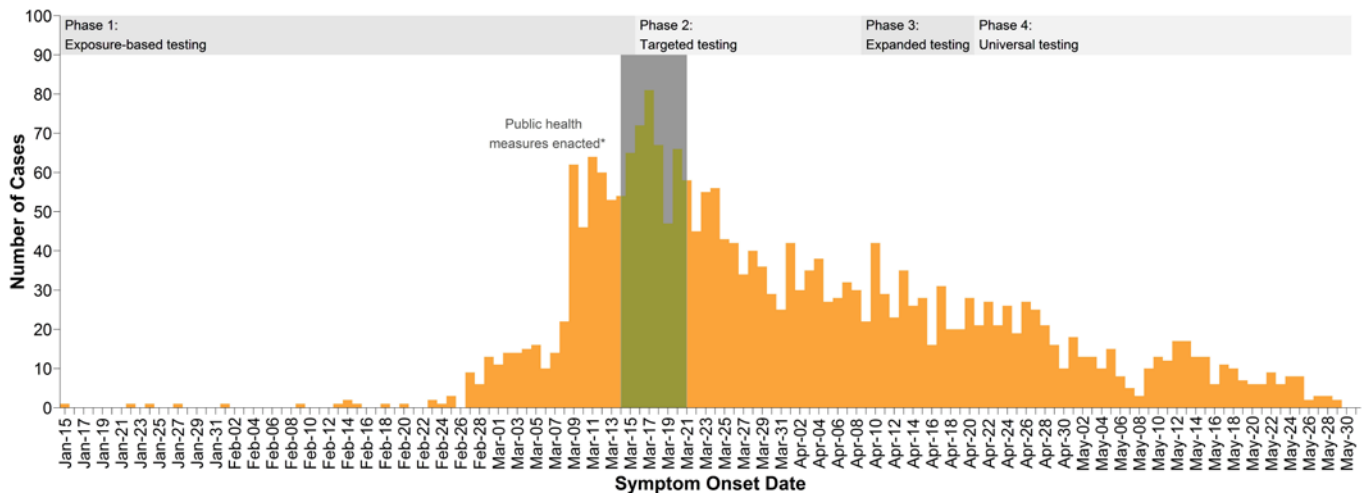
\*Findings are based on confirmed cases and probable lab cases (case definition found here: [http://www.bccdc.ca/health-professionals/clinical-resources/case-definitions/covid-19-\(novel-coronavirus\)](http://www.bccdc.ca/health-professionals/clinical-resources/case-definitions/covid-19-(novel-coronavirus))) reported from Health Authorities to BCCDC as of 10am, except where otherwise noted. Data represent a subset of actual infections and are subject to change with changes in testing recommendations and practices, changes in case definitions, data reconciliation and/or as data become more complete.

**Table 1:** Epidemiological profile of reported cases by health authority, BC, January 1 – June 1, 2020 (N=2,597)

	Fraser	Interior	Vancouver Island	Northern	Vancouver Coastal	Total N (%) <sup>b</sup>
<b>Total number of cases<sup>a</sup></b>	<b>1,307</b>	<b>195</b>	<b>127</b>	<b>64</b>	<b>904</b>	<b>2,597</b>
<b>New cases since yesterday<sup>c</sup></b>	<b>13</b>	<b>0</b>	<b>0</b>	<b>0</b>	<b>2</b>	<b>15</b>
Median age in years, cases <sup>d</sup>	50	48	52	46	55	51 years (range 0-103y)
Female sex, cases	656	91	68	38	495	1,348 (52%)
<b>Cumulative incidence per 100,000 population<sup>e</sup></b>	<b>68.1</b>	<b>24.3</b>	<b>14.9</b>	<b>21.3</b>	<b>72.9</b>	<b>50.8</b>
<b>Ever hospitalized<sup>f</sup></b>	<b>254</b>	<b>29</b>	<b>25</b>	<b>13</b>	<b>172</b>	<b>493 (19%)</b>
Median age in years, ever hospitalized <sup>d</sup>	69	62	72	47	69	69 years (range 0-98y)
Currently hospitalized <sup>f</sup>	16	1	1	1	13	32
<b>Currently in critical care<sup>g</sup></b>	<b>1</b>	<b>0</b>	<b>0</b>	<b>0</b>	<b>4</b>	<b>5</b>
<b>Total number of deaths<sup>f</sup></b>	<b>72</b>	<b>2</b>	<b>5</b>	<b>0</b>	<b>87</b>	<b>166 (6%)</b>
<b>New deaths since yesterday<sup>c</sup></b>	<b>1</b>	<b>0</b>	<b>0</b>	<b>0</b>	<b>0</b>	<b>1</b>
Median age in years, deaths <sup>d</sup>	83	73	85	NA	87	85 years (range 47-103y)
<b>Discontinued isolation<sup>h</sup></b>	<b>1,095</b>	<b>191</b>	<b>121</b>	<b>63</b>	<b>737</b>	<b>2,207 (85%)</b>

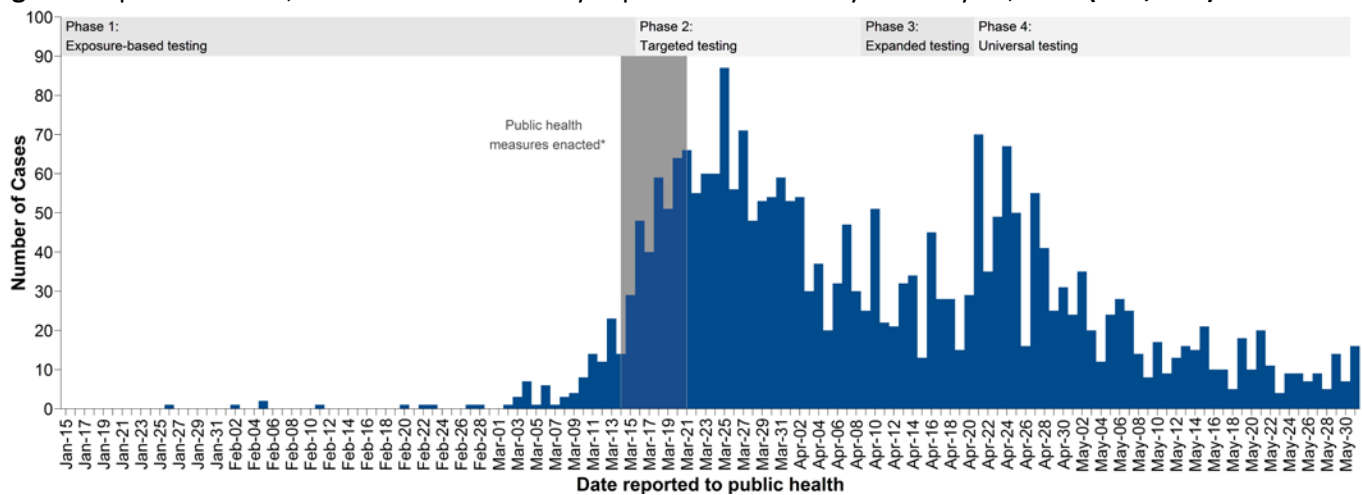
- Cases include confirmed and laboratory-probable cases. Provincial COVID-19 case definitions are found here: [http://www.bccdc.ca/health-professionals/clinical-resources/case-definitions/covid-19-\(novel-coronavirus\)](http://www.bccdc.ca/health-professionals/clinical-resources/case-definitions/covid-19-(novel-coronavirus)).
- Denominator for % derivation is total number of cases (N), except sex for which is calculated based on those with known information on sex.
- "New" cases and deaths reflect the difference in counts reported to the BCCDC between one day and the next as of 10am. This may not be equal to the number of cases/deaths by date reported to HA, as: (1) cases/deaths reported prior to 10am would be included as new cases/deaths in the current day's count and cases reported after 10am would be included in the next day's count; and (2) there may be some delays between cases/deaths being reported to HAs and then reported to BCCDC.
- Median age is calculated based on those with known information on age.
- PEOPLE2019-2020 population estimates.
- Serious outcomes (i.e., hospitalization, death) may be incomplete or out of date (i.e., under-estimates) owing to the timing and process for case status update.
- Source: PHSA June 1 @10am. The number of COVID cases in critical care units is reported daily by each Health Authority and includes the number of COVID patients in all critical care beds (e.g., intensive care units; high acuity units; and other surge critical care spaces as they become available and/or required). Work is ongoing to improve the completeness and accuracy of the data reported.
- Self-isolation has been discontinued per the criteria outlined in [BC guidelines for public health management of COVID-19](#).

Figure 2: Epidemic curve, COVID-19 cases in BC by symptom onset date January 15 - May 31, 2020 (N=2,424<sup>†</sup>)



<sup>†</sup> Only cases with symptom onset dates reported are included; cases with symptom onset date on the same day as this report are excluded as only a portion are available at the time the data are extracted.

Figure 3: Epidemic curve, COVID-19 cases in BC by reported date January 15 - May 31, 2020 (N=2,597<sup>‡</sup>)

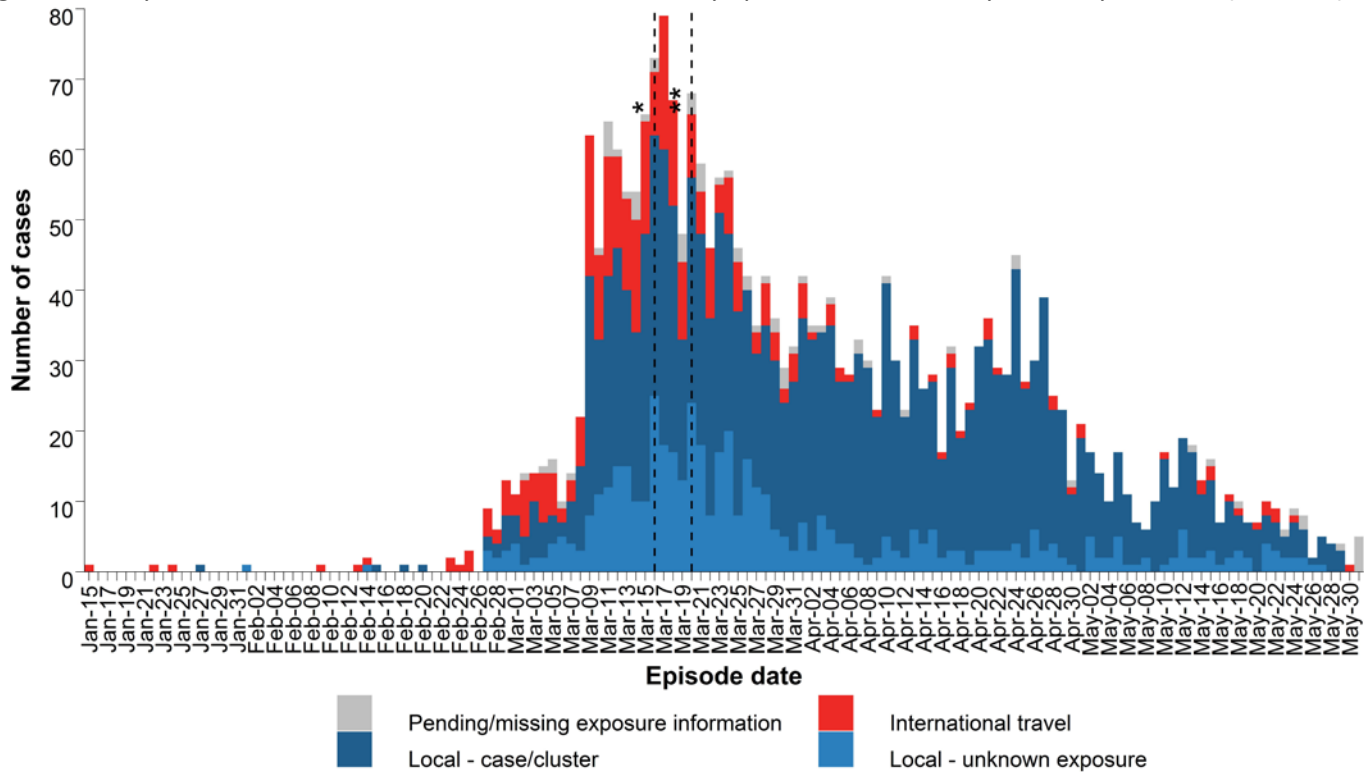


<sup>‡</sup> Cases reported on the same day as this report are excluded as only a portion are available at the time the data are extracted. The number of cases reported by day differs from that in Table 1 in previous reports as this figure reflects the date the case was lab-confirmed and reported to the Health Authority.

A number of public health measures were enacted during the week shaded in grey. These include: March 14: Spring break started for most schools; March 16: Mass gatherings public health order implemented (>50 people), entry of foreign nationals banned, symptomatic individuals banned from flights to Canada, international flights restricted to four national airports; March 17: BC public health emergency declared, traveller self-isolation public health order implemented; March 18: Provincial state of emergency declared, food and drink service restrictions public health order implemented; March 20: US/Canada border closed to non-essential travel; March 21: closure of personal service establishments. Please refer to <http://www.bccdc.ca/health-info/diseases-conditions/covid-19/testing/phases-of-covid-19-testing-in-bc> for laboratory testing criteria changes.

**How to interpret the epidemic curves:** Figure 2 shows the date that a case's illness started. Figure 3 shows the date the illness was confirmed and reported by the laboratory. There is a delay between the beginning of a person's illness (symptom onset date) and the date the laboratory confirms and reports the illness (reported date). New cases only have a reported date available and appear on the right of the curve in Figure 3, but their symptom onset would have occurred prior. As information on symptom onset becomes available through public health investigation, cases are expected to appear on earlier dates in Figure 2.

**Figure 4:** Likely source of infection for COVID-19 cases in BC by episode date<sup>§</sup>, January 15 - May 31, 2020 (N=2,597)



§ Episode date is based on symptom onset date (n=2,424), if not available then date COVID-19 was reported to health authority (n=173).

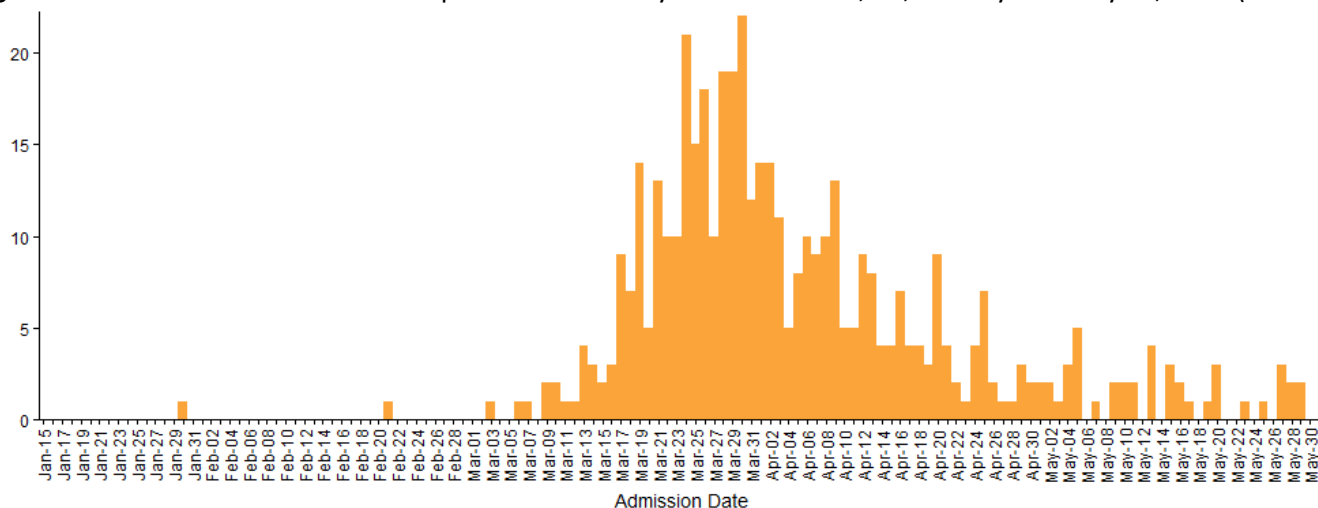
\* March 16: Entry of foreign nationals banned; symptomatic individuals banned from flights to Canada; international flights restricted to four national airports.

\*\* March 20: US/Canada border closed to non-essential travel.

**Table 2:** Number and proportion of likely source of infection for COVID-19 cases in BC, January 15 - May 31, 2020 (N=2,597)

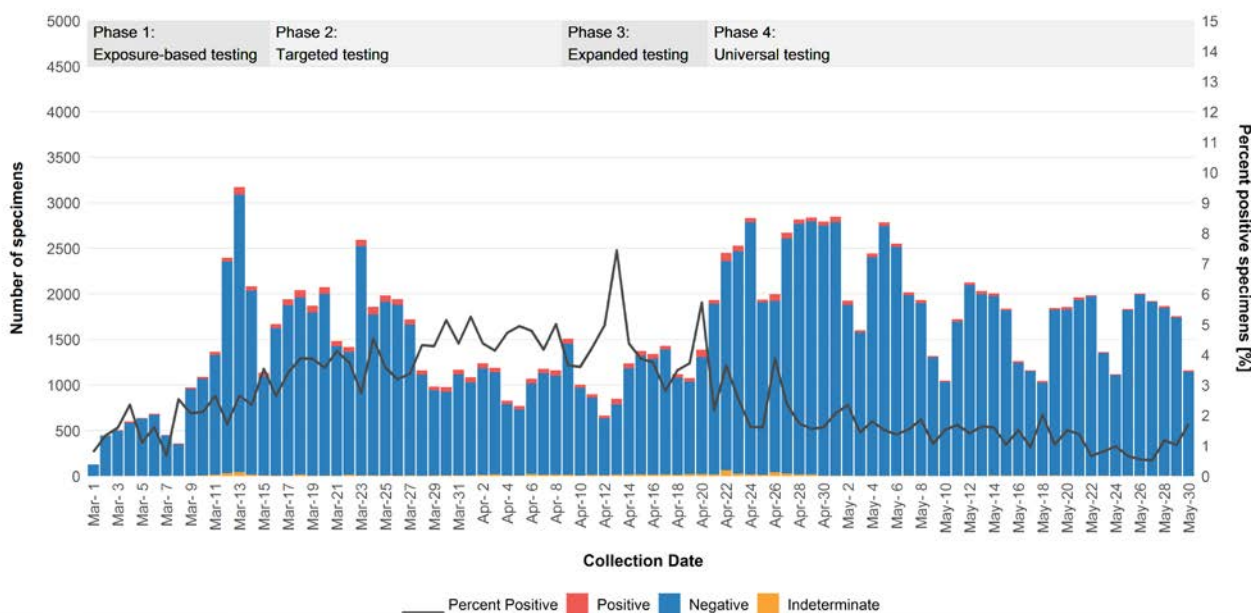
International travel n (%)	Local – case/cluster n (%)	Local – unknown source n (%)	Pending/missing info n (%)
334 (13)	1,688 (65)	500 (19)	75 (3)

**Figure 5.** Number of new COVID-19 hospital admissions by admission date, BC, January 15 - May 31, 2020 (N=453\*)



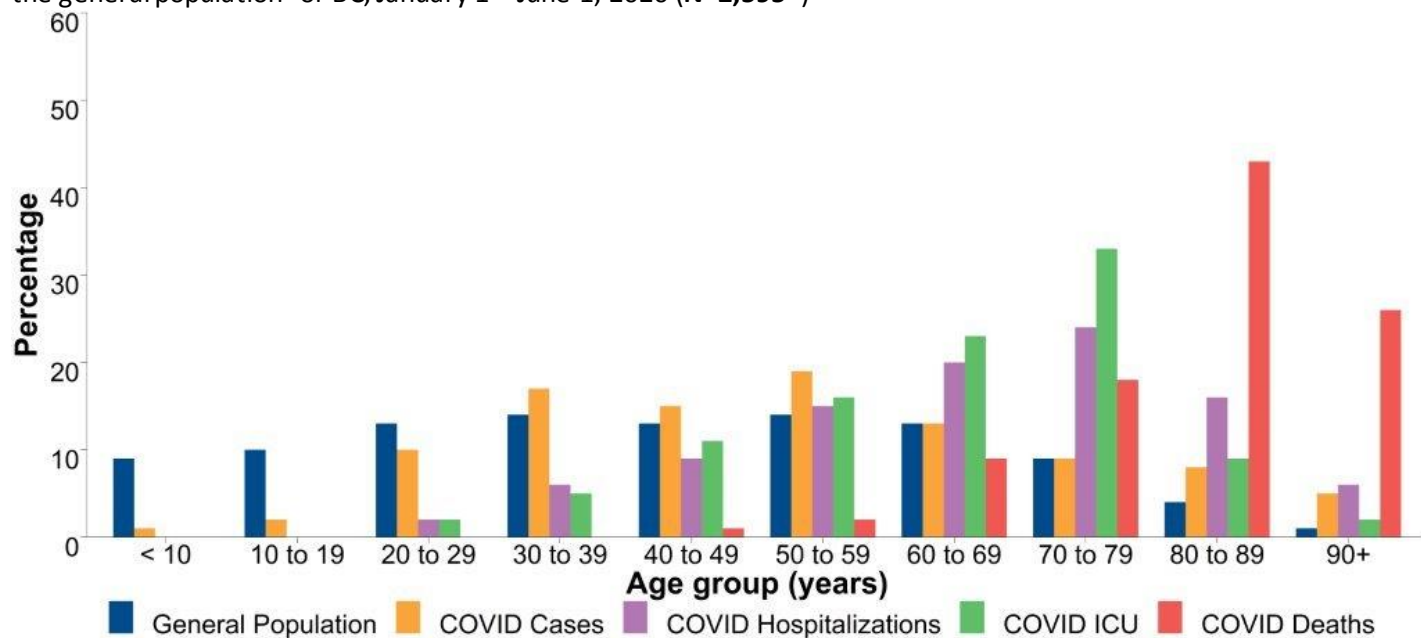
\*Only includes hospitalized cases with valid admission dates.

**Figure 6:** Number and proportion of SARS-CoV-2 positive respiratory specimens, BC, March 1 – May 30, 2020 (N=144,308; Positive=2.5%)



Data source: PLOVER extract on June 1, 2020. Methods and caveats: SARS-CoV-2 specimens are tallied at the specimen level by date the specimen was collected. The proportion positive on a given date may include new positive cases and retested positive cases; this may over-estimate proportionate positivity. Similarly, individuals may be tested repeatedly after becoming negative; this may under-estimate proportionate positivity. Refer to <http://www.bccdc.ca/health-info/diseases-conditions/covid-19/testing/phases-of-covid-19-testing-in-bc> for description of laboratory testing phases.

**Figure 7:** Percentage distribution of COVID-19 cases, hospitalization, ICU admissions and deaths by age, compared to the general population<sup>†</sup> of BC, January 1 – June 1, 2020 (N=2,595\*)



\*Only cases with age information available are included.

† PEOPLE2019-2020 population estimates

Note: COVID hospitalizations have been reported in the <10y and 10-19y age groups but represent <1% of hospitalizations and are therefore not visible.

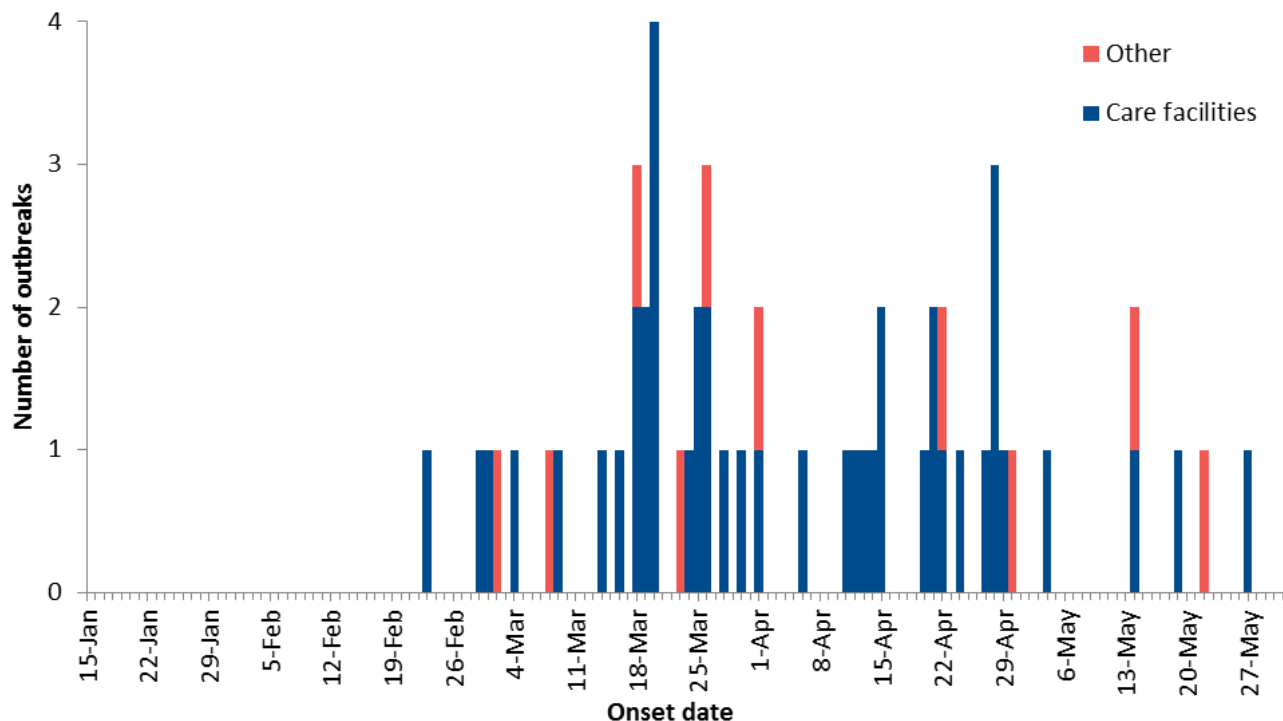
**Table 3:** Number and percentage distribution of COVID-19 cases, hospitalization, ICU admissions and deaths by age, compared to the general population of BC, January 1 – June 1, 2020 (N=2,595\*)

Age groups	COVID cases n (%)	Cases ever hospitalized n (%)	Cases ever in ICU n (%)	COVID deaths n (%)	General population <sup>†</sup> n (%)
<10 Years	28 (1)	2 (<1)	0 (0)	0 (0)	468,280 (9)
10-19 Years	52 (2)	1 (<1)	0 (0)	0 (0)	507,197 (10)
20-29 Years	269 (10)	10 (2)	4 (2)	0 (0)	684,681 (13)
30-39 Years	452 (17)	32 (6)	9 (5)	0 (0)	730,523 (14)
40-49 Years	396 (15)	46 (9)	18 (11)	2 (1)	647,790 (13)
50-59 Years	492 (19)	72 (15)	27 (16)	4 (2)	721,355 (14)
60-69 Years	325 (13)	99 (20)	39 (23)	15 (9)	675,632 (13)
70-79 Years	240 (9)	120 (24)	56 (33)	30 (18)	436,179 (9)
80-89 Years	213 (8)	80 (16)	15 (9)	72 (43)	188,010 (4)
90+ Years	128 (5)	31 (6)	3 (2)	43 (26)	50,876 (1)
<b>Total</b>	<b>2,595</b>	<b>493</b>	<b>171</b>	<b>166</b>	<b>5,110,523</b>

\*Only cases with age information available are included.

† PEOPLE2019-2020 population estimates

**Figure 8:** COVID-19 outbreaks\* by earliest date\*\*, BC, January 15 – June 1, 2020 (N=54)



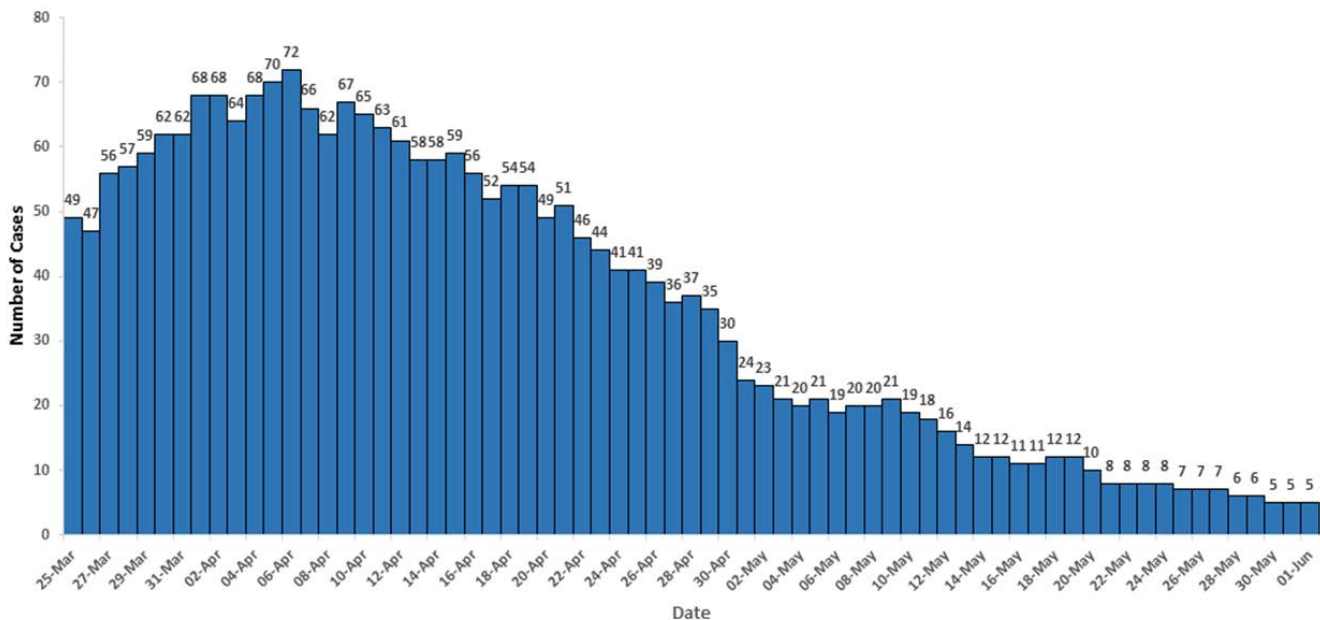
\* Care facility (acute/longterm care/independent living) outbreaks have at least one lab-confirmed COVID-19 staff or resident. Other outbreaks have two or more lab-confirmed COVID-19 cases diagnosed within a 14-day period in closed or common settings (e.g. penitentiary, shared living or work setting).  
\*\* Earliest date is date of onset of earliest case in the outbreak (or reported date of earliest case when onset is unavailable) or date outbreak was declared.

**Table 4:** Outbreak and case counts of reported COVID-19 reported outbreaks\*, BC, January 15 – June 1, 2020 (N=54)

	Care facility	Other settings	Total
Outbreaks			
<b>Total outbreaks</b>	<b>44</b>	<b>10</b>	<b>54</b>
New since last report	0	0	0
Active outbreaks	13	5	18
Outbreaks declared over	31	5	36
Outbreak cases			
<b>Total cases</b>	<b>556</b>	<b>388</b>	<b>944</b>
Residents/patients	340	122	462
Staff/other	216	266	482
<b>Total deaths</b>	<b>114</b>	<b>2</b>	<b>116</b>
Residents/patients	114	1	115
Staff/other	0	1	1

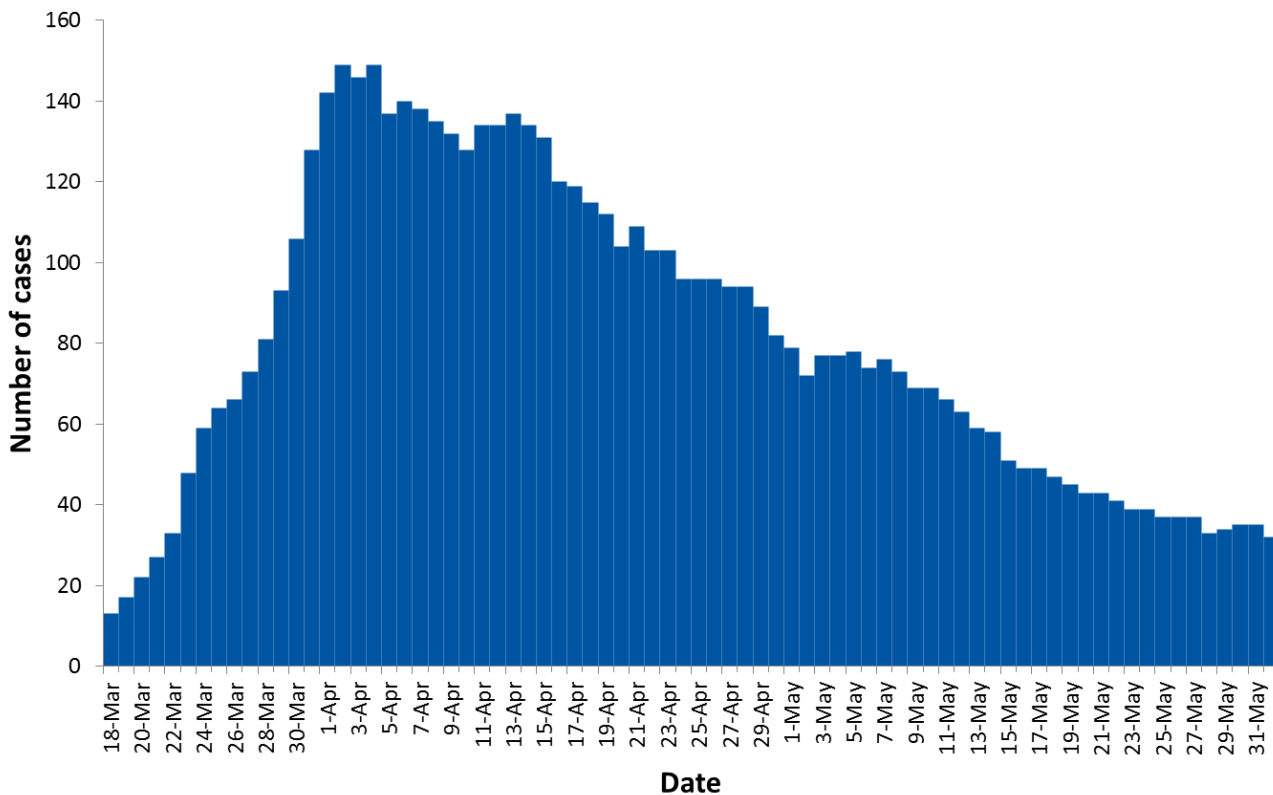
\* Care facility (acute/longterm care/independent living) outbreaks have at least one lab-confirmed COVID-19 staff or resident. Other outbreaks have two or more lab-confirmed COVID-19 cases diagnosed within a 14-day period in closed or common settings (e.g. penitentiary, shared living or work setting).

**Figure 9:** Total positive COVID-19 cases in critical care by day, BC, March 25 - June 1, 2020



Data source: PHSA June 1. Note: critical care data may change over time due to small adjustments and improvements in data quality.

**Figure 10:** Number of COVID-19 cases in hospital by day, BC, March 18 - June 1, 2020



Data available starting March 18. For dates with no data available (April 12 and Sundays from May 10 onwards), the previous day's value was used. Note: Hospitalization data may be incomplete or out of date (i.e., under-estimates) owing to the timing and process for case status update. Four hospitalizations were added starting on May 3 due to data corrections. This does not reflect new admissions on that day but rather admissions occurring prior and up to this time.