

British Columbia Weekly COVID-19 Surveillance Report*

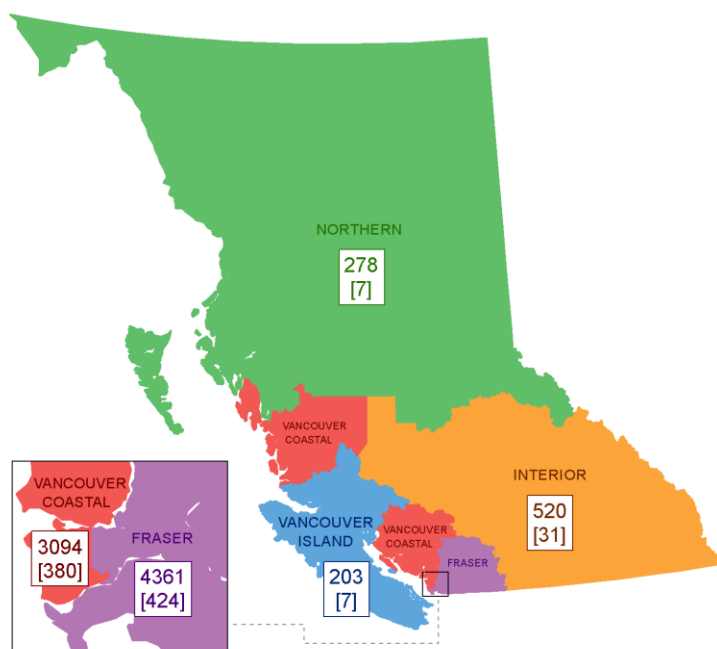
September 18 – September 24, 2020**

Key Findings

BC continues to experience a high number of COVID-19 cases with an increasing number of hospitalizations.

- The number of new cases reported this week (880) increased compared to last week (833) ([Table 1](#), [Fig 3](#)).
- The number of active cases (1,371) has decreased compared to last week (1,705) ([Table 1](#)).
- The most likely source of infection remains contact with a local case or cluster, with a large proportion of recent cases still pending exposure information ([Table 2](#)).
- The median age of cases has decreased since the beginning of the pandemic (55 years down to 38 years) ([Table 1](#)).
- Case counts in most age groups have increased this week, with the exception of the 20-29, 30-39 years, and 50-59 years age groups ([Fig 9](#)).
- The number of new hospital admissions has stabilized in recent weeks ([Fig 5](#)), with the number of cases currently in hospital similar to the numbers observed in early May ([Fig 12](#)).
- The number of cases currently in critical care is also stabilizing and is still much lower than counts observed in phase 1 ([Fig 11](#)).

Figure 1: Map of total and new COVID-19 cases reported since last week by health authority of residence, BC, January 1 – September 24, 2020 (N=8,543)[†]



[†]New cases reported since last week by health authority are denoted in parentheses.

[†]Cases reported as “Out of Canada” (n=87) are excluded from the map.

*Findings are based on lab-confirmed, lab-probable, and epi-linked cases (case definition found here: [http://www.bccdc.ca/health-professionals/clinical-resources/case-definitions/covid-19-\(novel-coronavirus\)](http://www.bccdc.ca/health-professionals/clinical-resources/case-definitions/covid-19-(novel-coronavirus))) reported from Health Authorities to BCCDC as of 10am, except where otherwise noted. Data represent a subset of actual infections and are subject to change with changes in testing recommendations and practices, changes in case definitions, data reconciliation and/or as data become more complete. As of July 3, residents of other Canadian provinces/territories are reported by that province/territory.

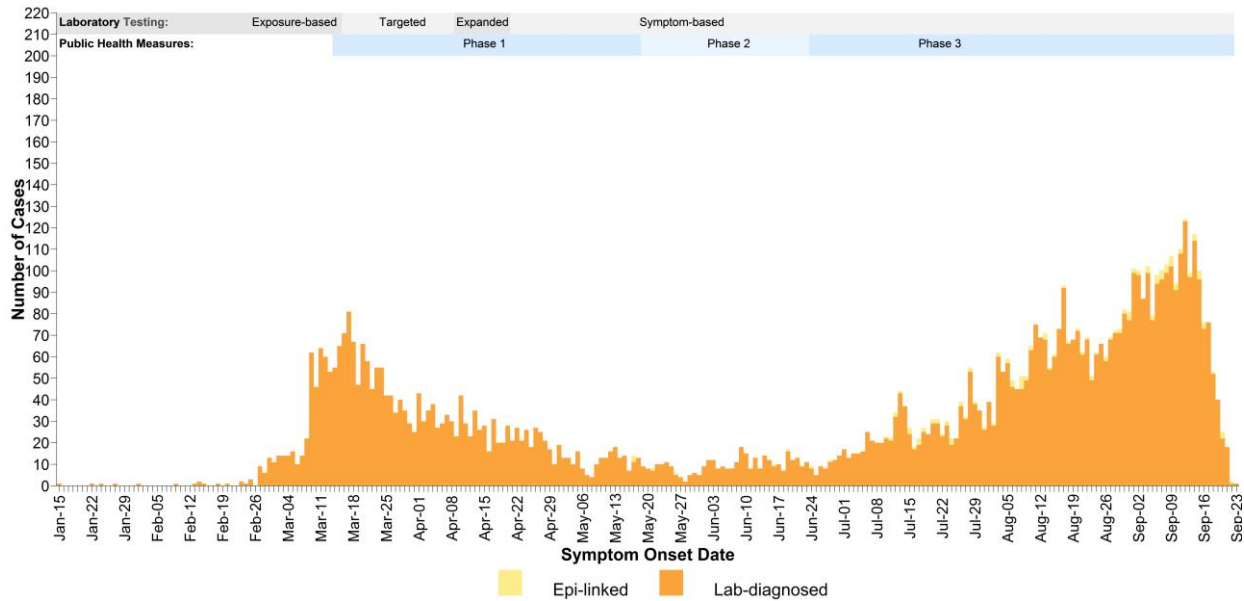
** Produced weekly (Thursdays) effective July 16, 2020.

Table 1: Epidemiological profile of reported cases by health authority of residence, BC, January 1 – September 24, 2020 (N=7,663)

	Health Authority of Residence ^c						Total N (%) ^d
	Fraser	Interior	Vancouver Island	Northern	Vancouver Coastal	Out of Canada	
Total number of cases^{a,b}	4361	520	203	278	3094	87	8543
Number of lab-confirmed and lab-probable cases	4304	493	199	258	3050	86	8390
Number of epi-linked probable cases ^{b,e}	57	27	4	20	44	1	153
New cases since last week (September 17)^f	424	31	7	37	380	1	880
Median age in years, cases ^g	38	36	41	38	37	42	38 years (range 0-104y)
Female sex, cases ^d	2122	259	102	149	1532	14	4,178 (49%)
Cumulative incidence per 100,000 population^h	227.4	64.9	23.9	92.6	249.5	-	165.5^h
Ever hospitalizedⁱ	388	36	25	28	245	5	727 (9%)
Median age in years, ever hospitalized ^g	69	62	72	60	67	50	68 years (range 0-98y)
Currently hospitalized ^{j,l}	25	0	0	6	29	1	61
Currently in critical care^{j,l}	5	0	0	2	13	-	20
Total deaths, case fatality and cumulative mortality^{h,i}	105	2	5	2	115	0	229 (3%) 4.5 per 100,000^h
New deaths since last week (September 17)^f	6	0	0	1	2	0	9
Median age in years, deaths ^g	84	73	85	72	87	NA	85 years (range 44-103y)
Discontinued isolation^k	3442	484	192	238	2482	79	6,917 (81%)
Currently active cases^m	791	34	6	38	495	7	1,371 (16%)

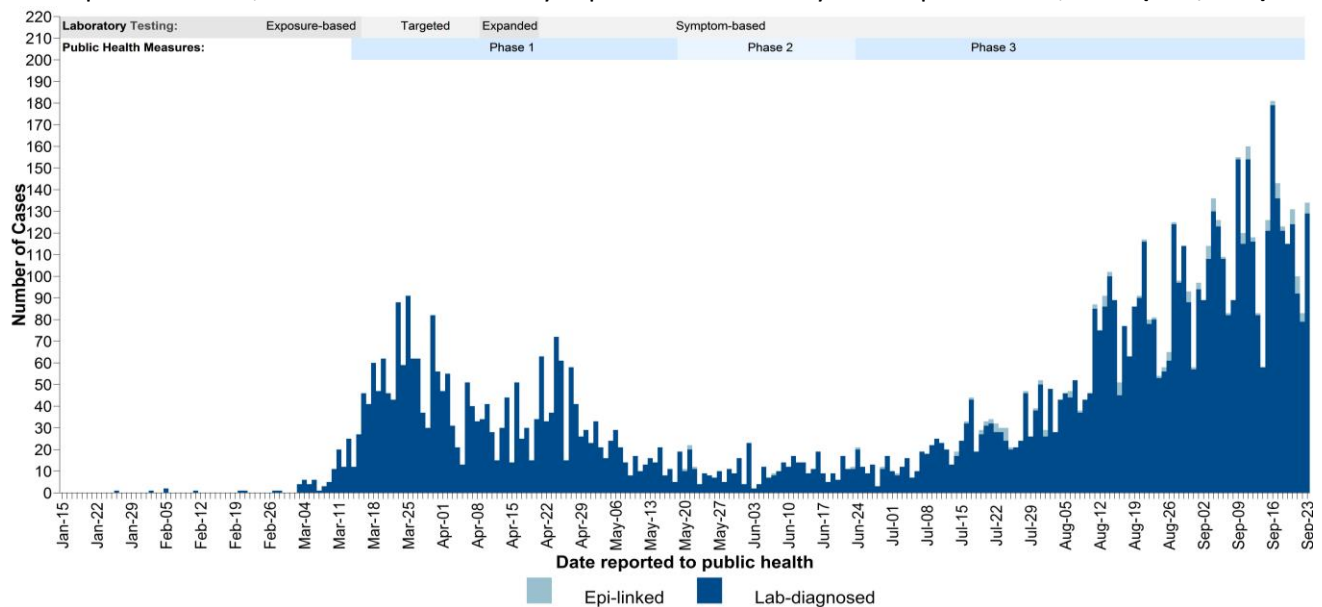
- a. Total COVID-19 cases includes lab-confirmed, lab-probable and epi-linked cases. Case definitions can be found at: [http://www.bccdc.ca/health-professionals/clinical-resources/case-definitions/covid-19-\(novel-coronavirus\)](http://www.bccdc.ca/health-professionals/clinical-resources/case-definitions/covid-19-(novel-coronavirus)). As of July 3, residents of other Canadian provinces/territories are reported by that province/territory.
- b. Epi-linked cases reported on or after May 19, 2020 are included.
- c. As of July 9, cases are reported by health authority of residence. When health authority of residence is not available, cases are assigned to the health authority reporting the case. Cases whose primary residence is outside of Canada are reported as "Out of Canada". Previously, cases were assigned to the health authority that reported the case. Please note that the health authority of residence and the health authority reporting the case do not necessarily indicate the location of exposure or transmission.
- d. Denominator for % derivation is total number of cases (N), except sex which is calculated based on those with known information on sex.
- e. Epi-linked case counts may decrease if cases are tested and meet a different case classification.
- f. "New" cases and deaths reflect the difference in counts reported to the BCCDC between the day of the last report and today's report as of 10am (net new). This may not be equal to the number of cases/deaths by date reported to HAs, as: (1) cases/deaths reported prior to 10am would be included as new cases/deaths in today's report and cases reported after 10am would be included in the next report's count; (2) there may be some delays between cases/deaths being reported to HAs and then reported to BCCDC; and (3) cases may be attributed to different health authorities or may be excluded from case counts as new information is obtained.
- g. Median age is calculated based on those with known information on age.
- h. PEOPLE2019-2020 population estimates. Incidence and mortality rates calculated only for BC residents.
- i. Serious outcome (e.g. hospitalization, death) tallies may be incomplete or out of date (i.e. under-estimates) owing to the timing and processes for case status update.
- j. Source: PHSa September 24 @10am. The number of COVID cases in critical care units is reported daily by each Health Authority and includes the number of COVID patients in all critical care beds (e.g., intensive care units; high acuity units; and other surge critical care spaces as they become available and/or required). Cases are reported by health authority of hospital. Work is ongoing to improve the completeness and accuracy of the data reported.
- k. Self-isolation has been discontinued per the criteria outlined in the BC guidelines for public health management of COVID-19: http://www.bccdc.ca/resource-gallery/Documents/Guidelines%20and%20Forms/Guidelines%20and%20Manuals/Epid/CD%20Manual/Chapter%201%20-%20CDC/2019-nCoV-Interim_Guidelines.pdf
- l. Current cases for September 24, 2020.
- m. Active cases exclude those who have died, discontinued isolation or been lost to follow up (n=26).

Figure 2: Epidemic curve, COVID-19 cases in BC by symptom onset date January 15 – September 23, 2020 (N=7,386[†])



[†] Only cases with symptom onset dates reported are included.

Figure 3: Epidemic curve, COVID-19 cases in BC by reported date January 15 – September 23, 2020 (N=8,537[‡])[‡]

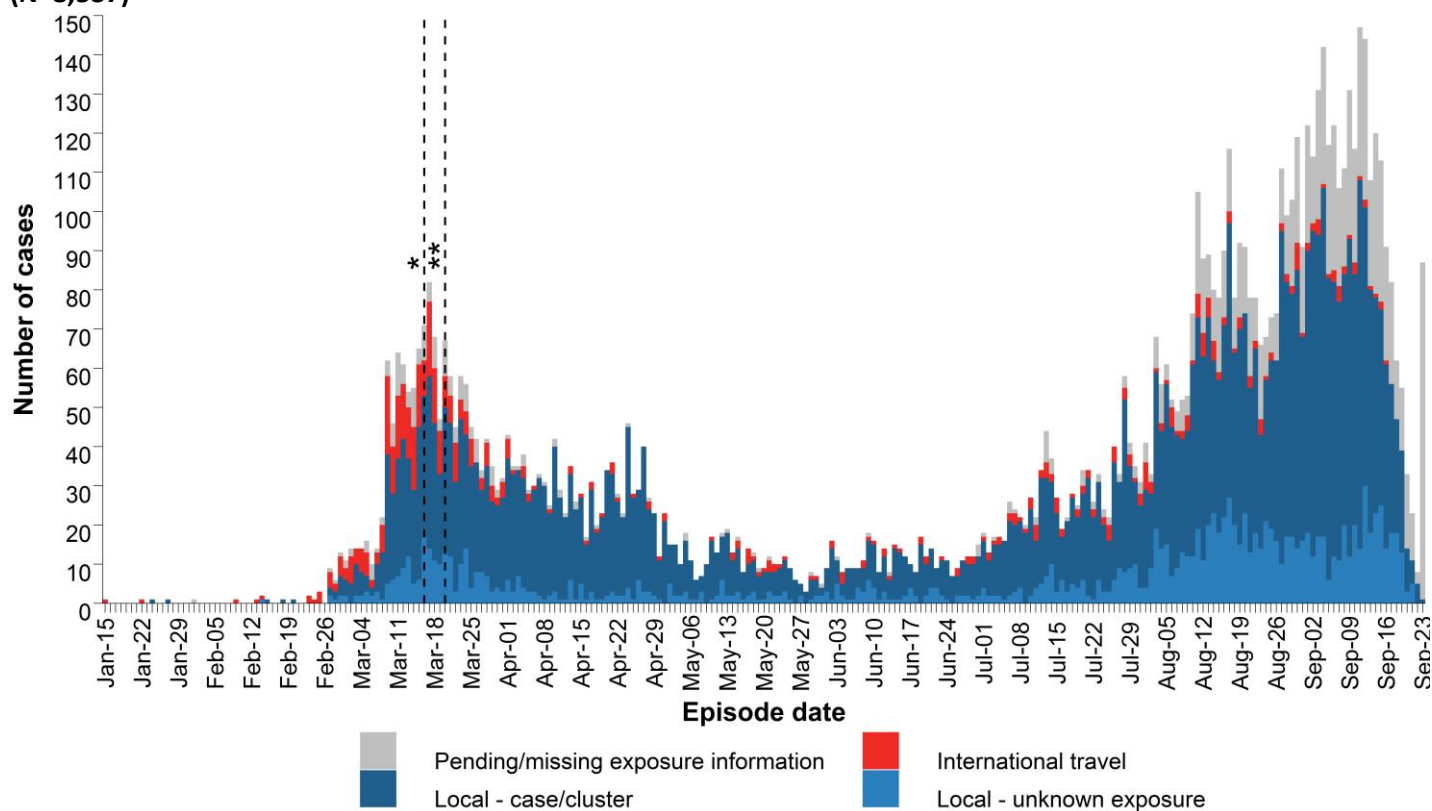


[‡] The number of cases reported by day differs from that in Table 1 in previous reports as this figure reflects the date the case was lab-confirmed and reported to the Health Authority.

Phase 1 – Public health measures enacted: March 14: Spring break started for most schools; March 16: Mass gatherings public health order implemented (>50 people), entry of foreign nationals banned, symptomatic individuals banned from flights to Canada, international flights restricted to four national airports; March 17: BC public health emergency declared, traveller self-isolation public health order implemented; March 18: Provincial state of emergency declared, food and drink service restrictions public health order implemented; March 20: US/Canada border closed to non-essential travel; March 21: closure of personal service establishments. **Phase 2 – Start of reopening:** May 19: Restoration of health services, retail, hair salons, in-person counselling, restaurants, cafes, pubs, museums, libraries, office-based worksites, sports, outdoor spaces, and child care. June 1: Students in K-12 return to school on a gradual and part-time basis. **Phase 3 – Continued reopening:** June 24: Non-essential travel within BC permitted with reopening of accommodation industry (hotels, motels, RV parks, cabins, etc.), overnight camping in BC parks, motion pictures and television production, and movie theatres. Please refer to <http://www.bccdc.ca/health-info/diseases-conditions/covid-19/testing/phases-of-covid-19-testing-in-bc> for laboratory testing criteria changes.

How to interpret the epidemic curves: Figure 2 shows the date that a case's illness started. Figure 3 shows the date the illness was confirmed and reported by the laboratory. There is a delay between the beginning of a person's illness (symptom onset date) and the date the laboratory confirms and reports the illness (reported date). New cases only have a reported date available and appear on the right of the curve in Figure 3, but their symptom onset would have occurred prior. As information on symptom onset becomes available through public health investigation, cases are expected to appear on earlier dates in Figure 2.

Figure 4: Likely source of infection for COVID-19 cases in BC by episode date[§], January 15 – September 23, 2020 (N=8,537)



[§] Episode date is based on symptom onset date (n=7,386), if not available then date COVID-19 was reported to health authority (n=1,151).

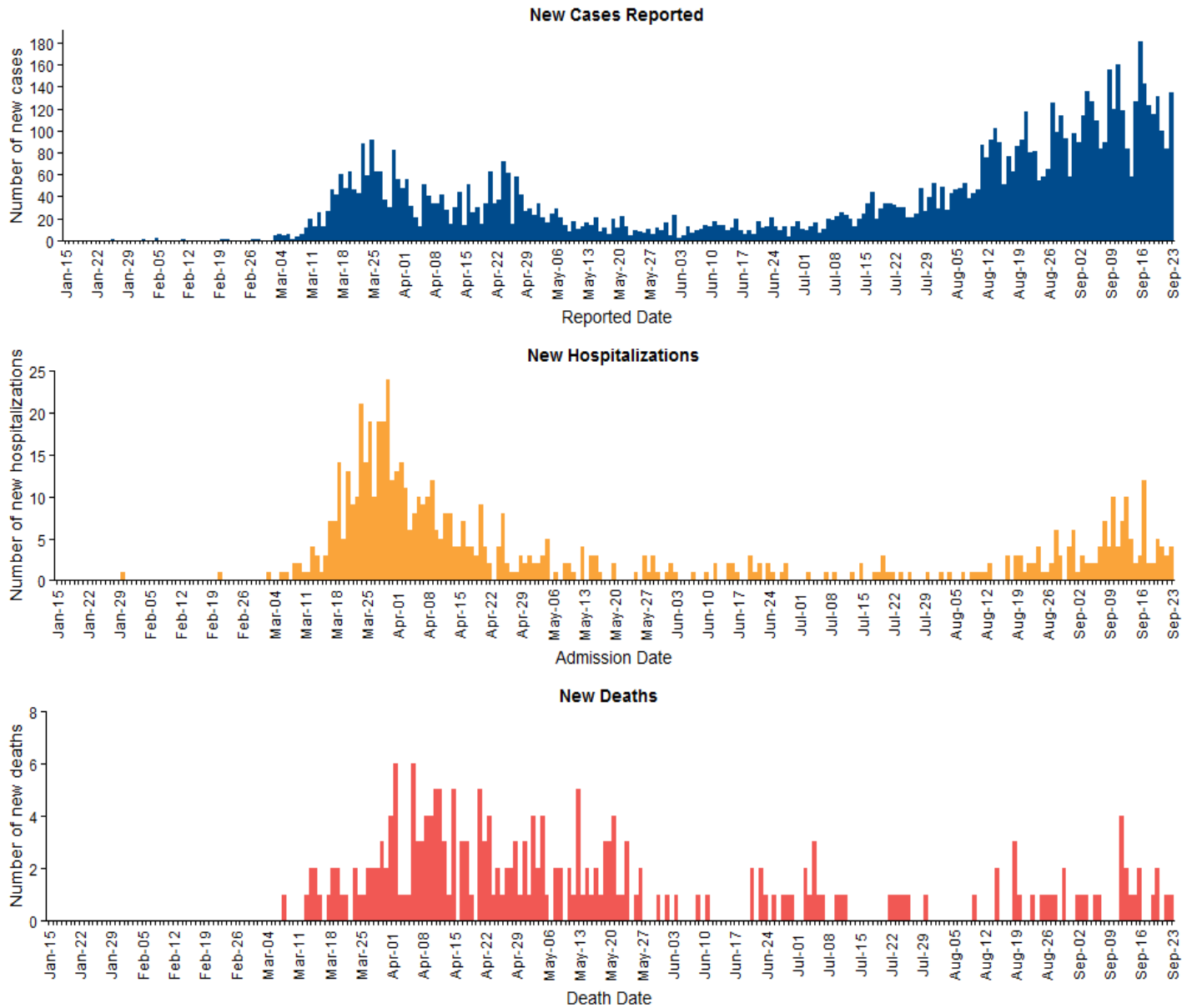
* March 16: Entry of foreign nationals banned; symptomatic individuals banned from flights to Canada; international flights restricted to four national airports.

** March 20: US/Canada border closed to non-essential travel.

Table 2: Number and proportion of likely source of infection for COVID-19 cases in BC by phase of epidemic, January 15 – September 23, 2020 (N=8,537)

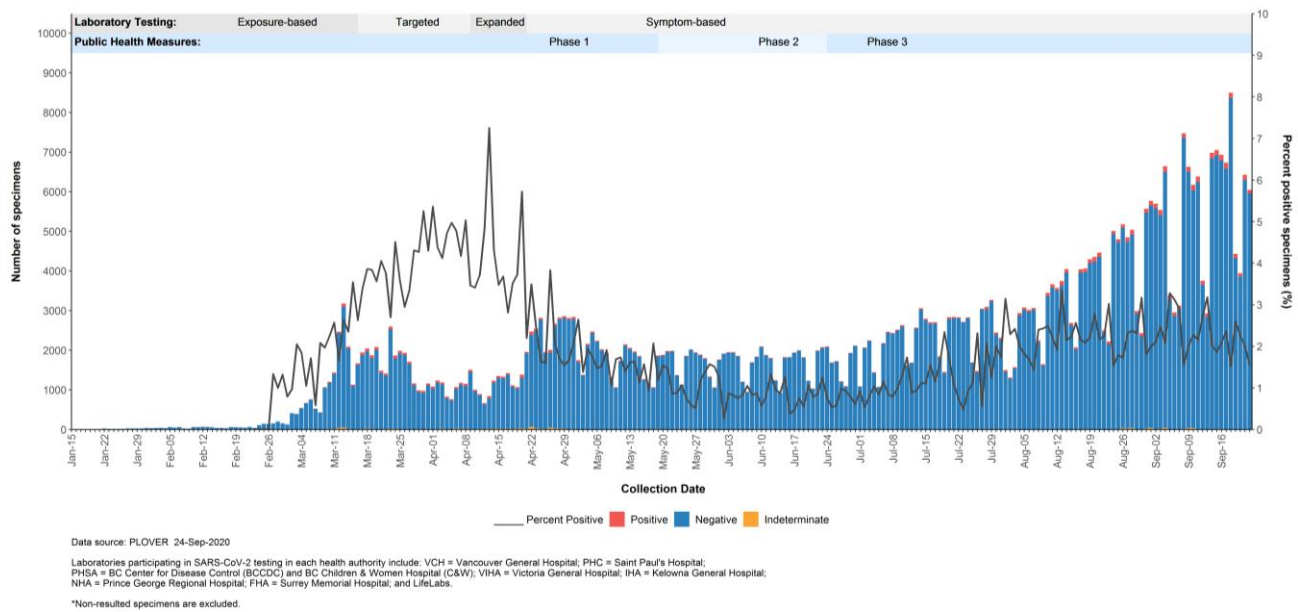
Phase of epidemic	International travel n (%)	Local – case/cluster n (%)	Local – unknown source n (%)	Pending/missing info n (%)	Total N (%)
Jan 15 – Mar 13 (Pre-Phase 1)	135 (30.1)	205 (45.8)	60 (13.4)	48 (10.7)	448 (100)
Mar 14 – May 18 (Phase 1)	188 (9.1)	1496 (72.0)	274 (13.2)	119 (5.7)	2,077 (100)
May 19 – yesterday (Phase 2 & 3)	216 (3.6)	3,599 (59.9)	1,036 (17.2)	1,161 (19.3)	6,012 (100)
Total	539 (6.3)	5,300 (62.1)	1,370 (16.0)	1,328 (15.6)	8,537 (100)

Figure 5: Number of COVID-19 cases, hospital admissions, and deaths by event date, BC, January 15 – September 23, 2020 (N=8,537*)



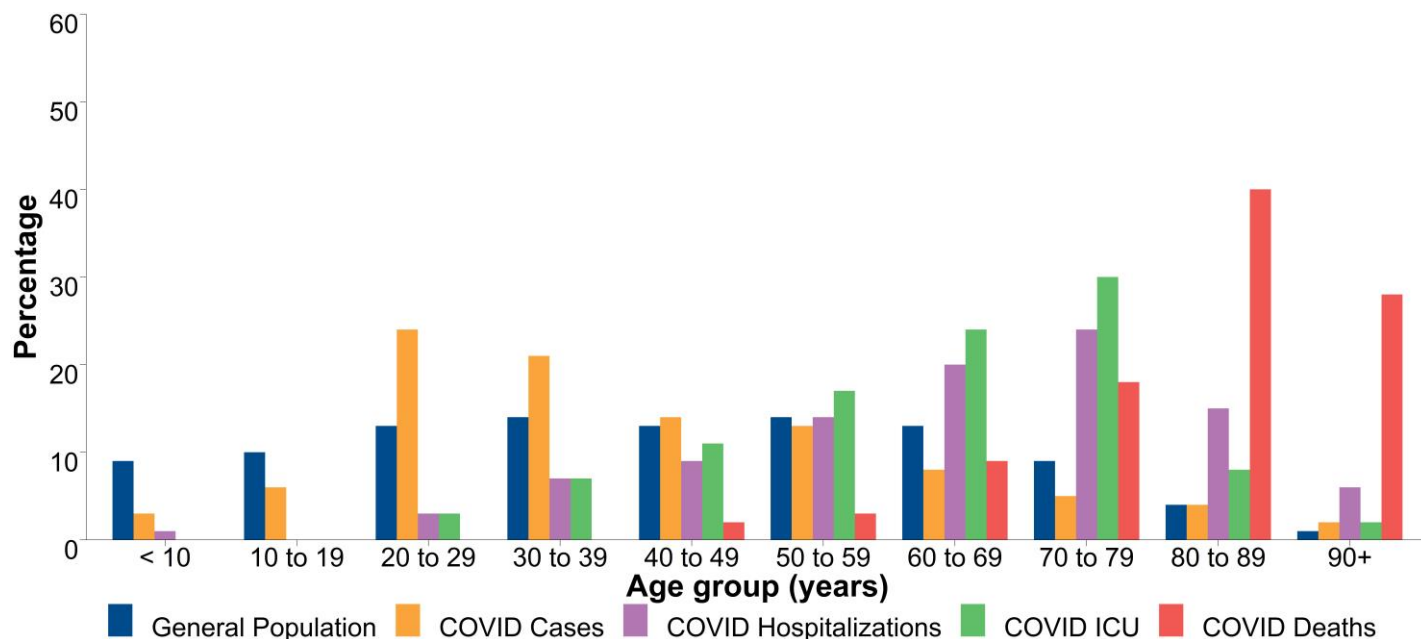
* Excludes hospitalizations with unknown admission dates or admission dates which precede symptom onset and/or discharge date.

Figure 6: Number and proportion of SARS-CoV-2 positive respiratory specimens, BC, January 15– September 22, 2020 (N=498,573 Positive=1.98%)



Data source: PLOVER extract on September 24, 2020. Methods and caveats: SARS-CoV-2 specimens are tallied at the specimen level by date the specimen was collected. The proportion positive on a given date may include new positive cases and retested positive cases; this may over-estimate proportionate positivity. Similarly, individuals may be tested repeatedly after becoming negative; this may under-estimate proportionate positivity. Refer to <http://www.bccdc.ca/health-info/diseases-conditions/covid-19/testing/phases-of-covid-19-testing-in-bc> for description of laboratory testing phases. Refer to footnotes on [page 3](#) for description of public health measures.

Figure 7: Percentage distribution of COVID-19 cases, hospitalizations, ICU admissions and deaths by age, compared to the general population† of BC, January 1 – September 24, 2020 (N=8,469*)



*Only cases with age information available are included.

† PEOPLE2019-2020 population estimates

Note: COVID hospitalizations have been reported in the <10y and 10-19y age groups but represent <1% of hospitalizations and are therefore not visible.

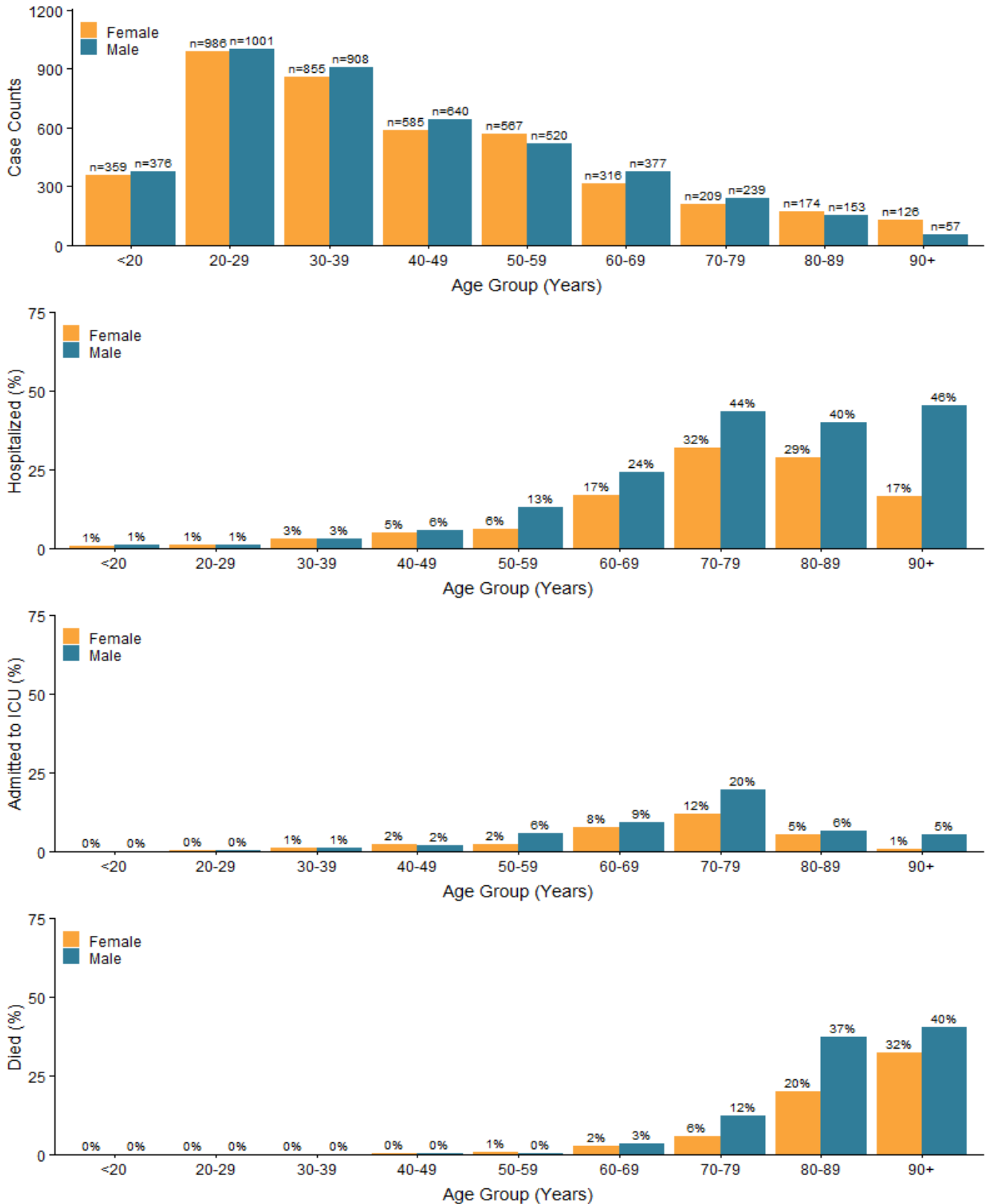
Table 3: Number and percentage distribution of COVID-19 cases, hospitalizations, ICU admissions and deaths by age, compared to the general population of BC, January 1 – September 24, 2020 (N=8,469*)

Age group	COVID cases n (%)	Cases ever hospitalized n (%)	Cases ever in ICU n (%)	COVID deaths n (%)	General population+ n (%)
<10 Years	271 (3)	4 (1)	0 (0)	0 (0)	468,280 (9)
10-19 Years	468 (6)	2 (<1)	0 (0)	0 (0)	507,197 (10)
20-29 Years	1,991 (24)	22 (3)	7 (3)	0 (0)	684,681 (13)
30-39 Years	1,768 (21)	54 (7)	16 (7)	0 (0)	730,523 (14)
40-49 Years	1,226 (14)	67 (9)	26 (11)	4 (2)	647,790 (13)
50-59 Years	1,090 (13)	103 (14)	42 (17)	6 (3)	721,355 (14)
60-69 Years	694 (8)	144 (20)	58 (24)	21 (9)	675,632 (13)
70-79 Years	450 (5)	171 (24)	72 (30)	41 (18)	436,179 (9)
80-89 Years	327 (4)	111 (15)	19 (8)	92 (40)	188,010 (4)
90+ Years	184 (2)	47 (6)	4 (2)	65 (28)	50,876 (1)
Total	8,469	725	244	229	5,110,523

* Only cases with age information available are included.

† PEOPLE2019-2020 population estimates

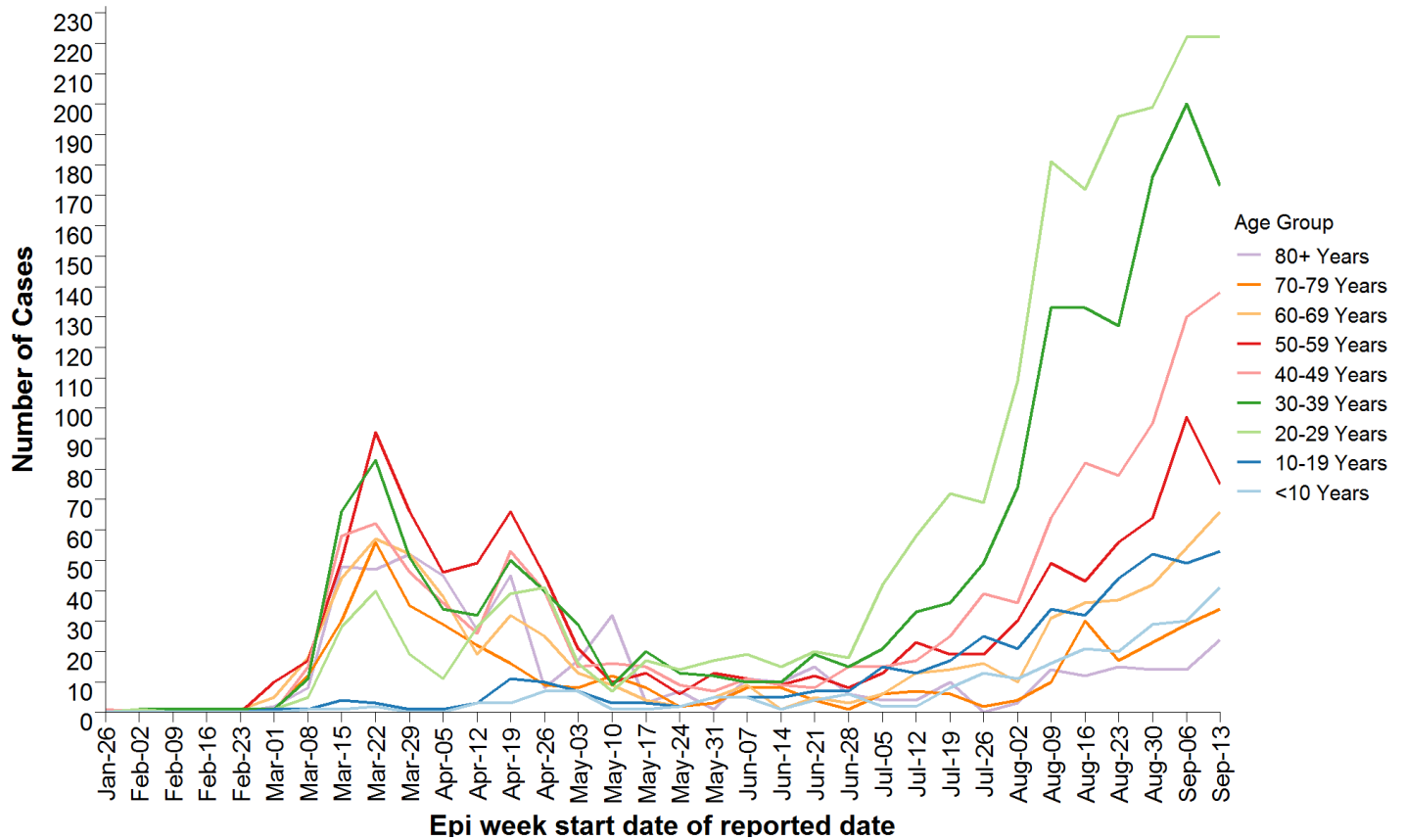
Figure 8: Counts of COVID-19 cases and proportions ever hospitalized, ever admitted to ICU, and with outcome of death by sex and age group, BC, January 1 – September 24, 2020 (N=8,448*)



* Includes cases with sex and age information available.

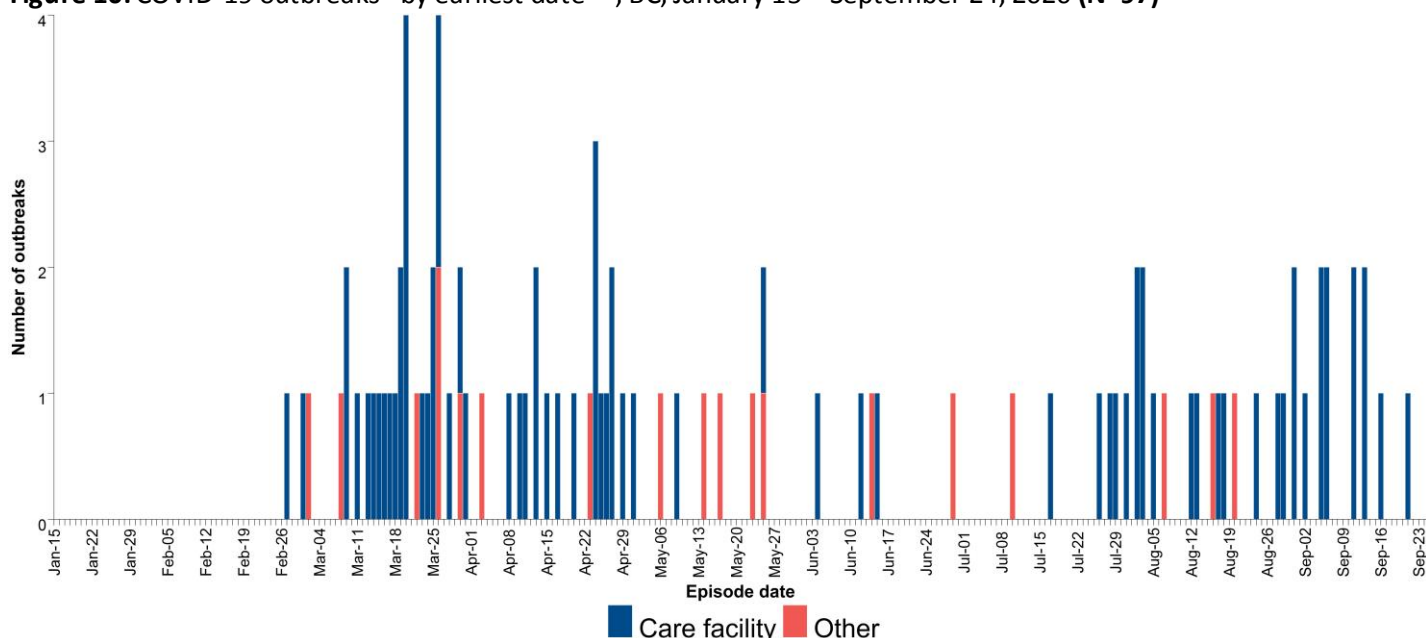
Note: Proportions calculated using the total number of cases in each sex and age group (displayed in top figure) as the denominator.

Figure 9: Counts of COVID-19 cases by ten year age groups and epidemiological week of report, BC, week of January 26 – week of September 13, 2020 (N=8,030*)



* Only cases with age information available are included.

Figure 10: COVID-19 outbreaks* by earliest date, BC, January 15 – September 24, 2020 (N=97)**



* Care facility (acute/long term care/independent living) outbreaks have at least one lab-confirmed COVID-19 staff or resident. Other outbreaks have two or more lab-confirmed COVID-19 cases diagnosed within a 14-day period in closed or common settings (e.g. penitentiary, shared living or work setting).

** Based on the earliest date available for the first case in the outbreak (symptom onset date or, if not available, reported date). Earliest dates are subject to change as data are updated.

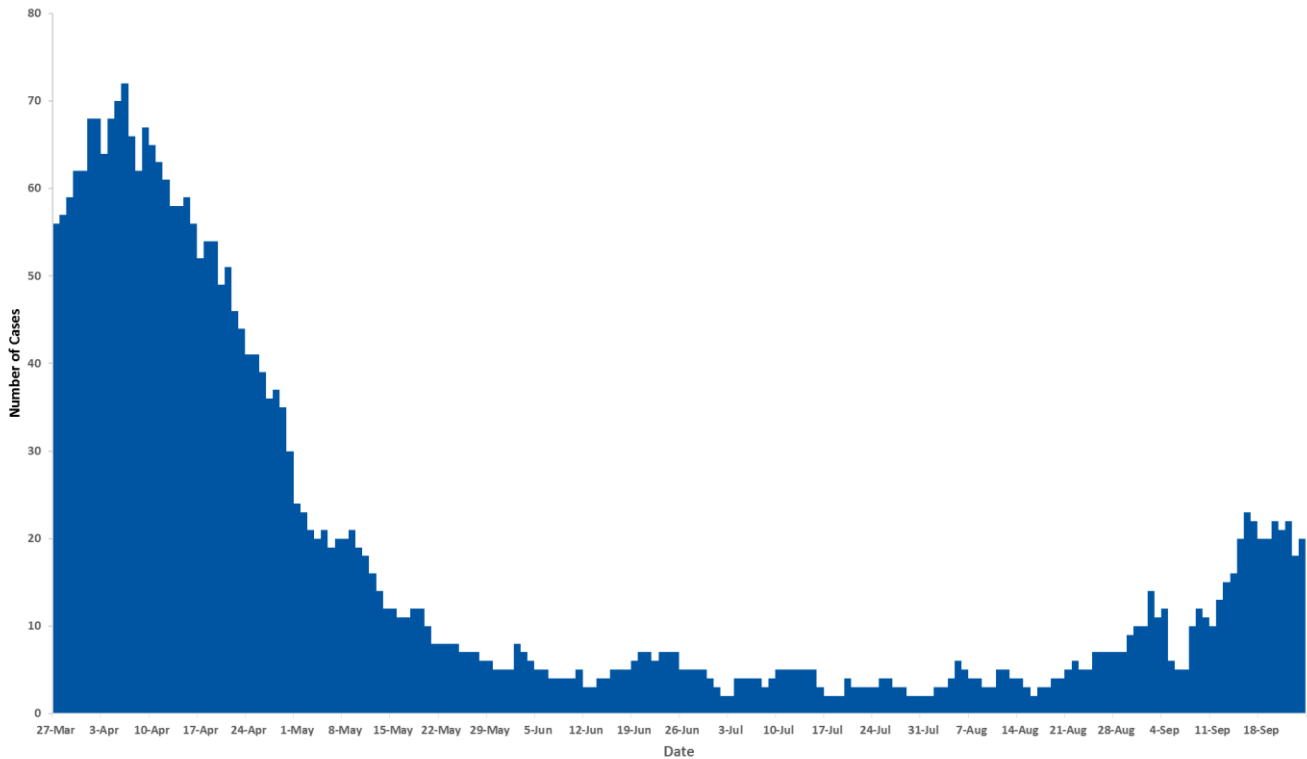
Table 4: Outbreak and case counts of reported COVID-19 outbreaks*, BC, January 15 – September 24, 2020 (N=97)

	Care facility	Other settings	Total
Outbreaks			
Total outbreaks	79	18	97
New since last week (September 10)	4	0	4
Active outbreaks	14	1	15
Outbreaks declared over	65	17	82
Outbreak cases**			
Total cases	822	507	1,329
Residents/patients	487	122	609
Staff/other	335	385	720
Total deaths	166	2	168
Residents/patients	166	1	167
Staff/other	0	1	1

* Care facility (acute/long term care/independent living) outbreaks have at least one lab-confirmed COVID-19 staff or resident. Other outbreaks have two or more lab-confirmed COVID-19 cases diagnosed within a 14-day period in closed or common settings (e.g. penitentiary, shared living or work setting).

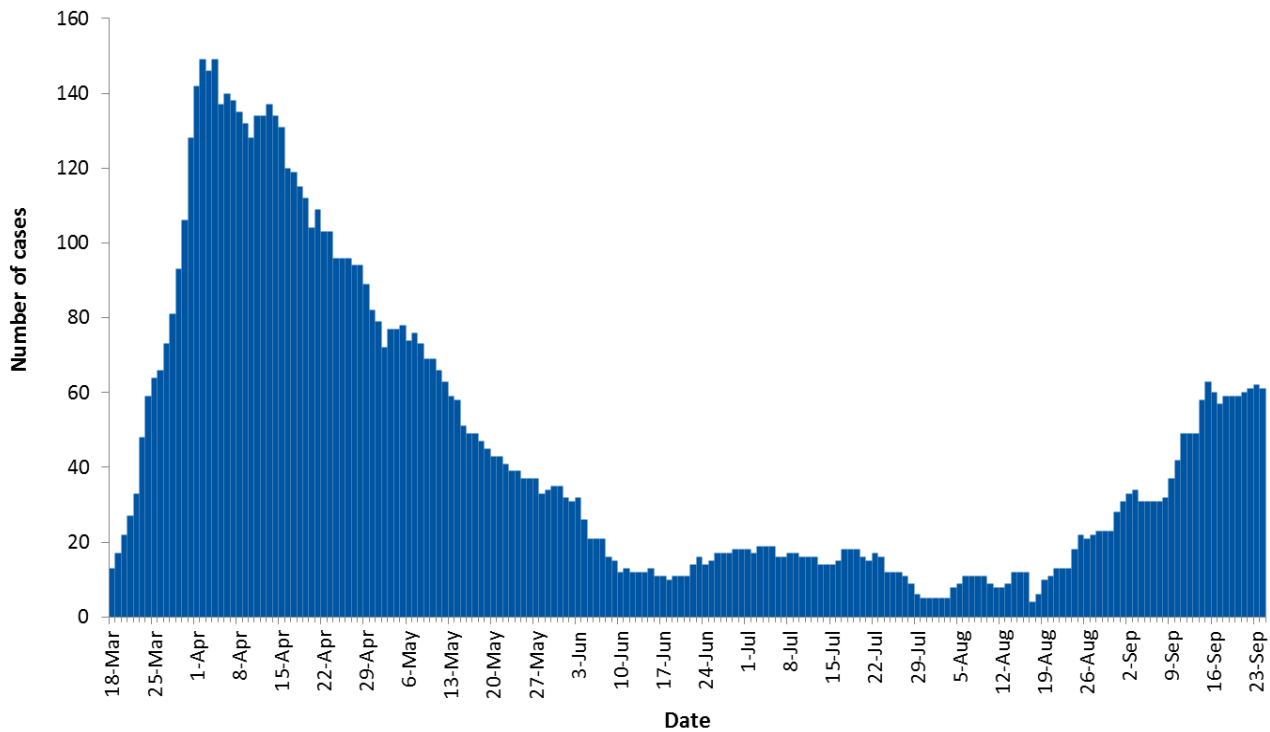
** Cases include lab-confirmed, lab-probable and epi-linked cases. Case definitions can be found at: [http://www.bccdc.ca/health-professionals/clinical-resources/case-definitions/covid-19-\(novel-coronavirus\)](http://www.bccdc.ca/health-professionals/clinical-resources/case-definitions/covid-19-(novel-coronavirus)).

Figure 11: Total COVID-19 cases in critical care by day, BC, March 25 – September 24, 2020



Data source: PHSA September 24, 2020. Note: critical care data may change over time due to small adjustments and improvements in data quality.

Figure 12: Number of COVID-19 cases in hospital by day, BC, March 18 – September 24, 2020



Data available starting March 18. For dates with no data available (April 12; Sundays from May 10 onwards; and Saturdays from June 7 onwards), the previous day's value was used. Hospitalization data may be incomplete or out of date (i.e., under-estimates) owing to the timing and process for case status update.

International and National Epidemiological Comparisons

Figure 13: Daily new and cumulative diagnosed COVID-19 case and death rates by select countries vs BC and Canada

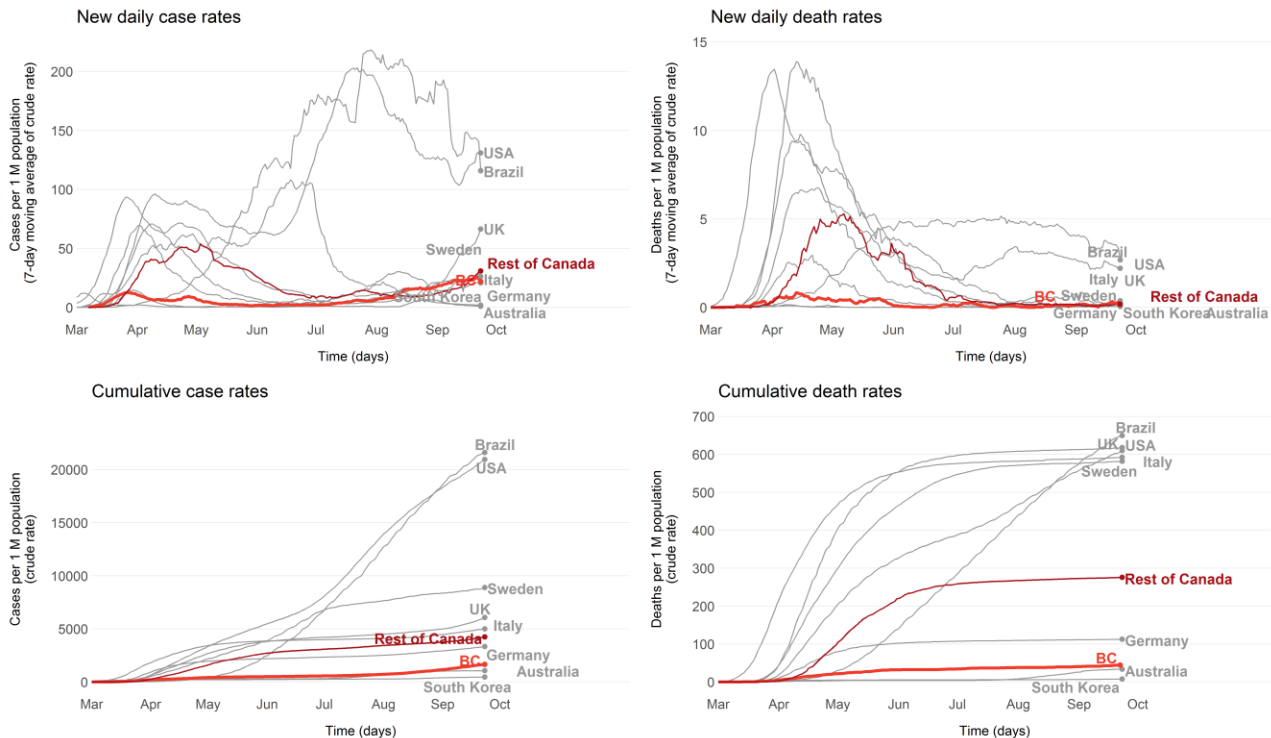
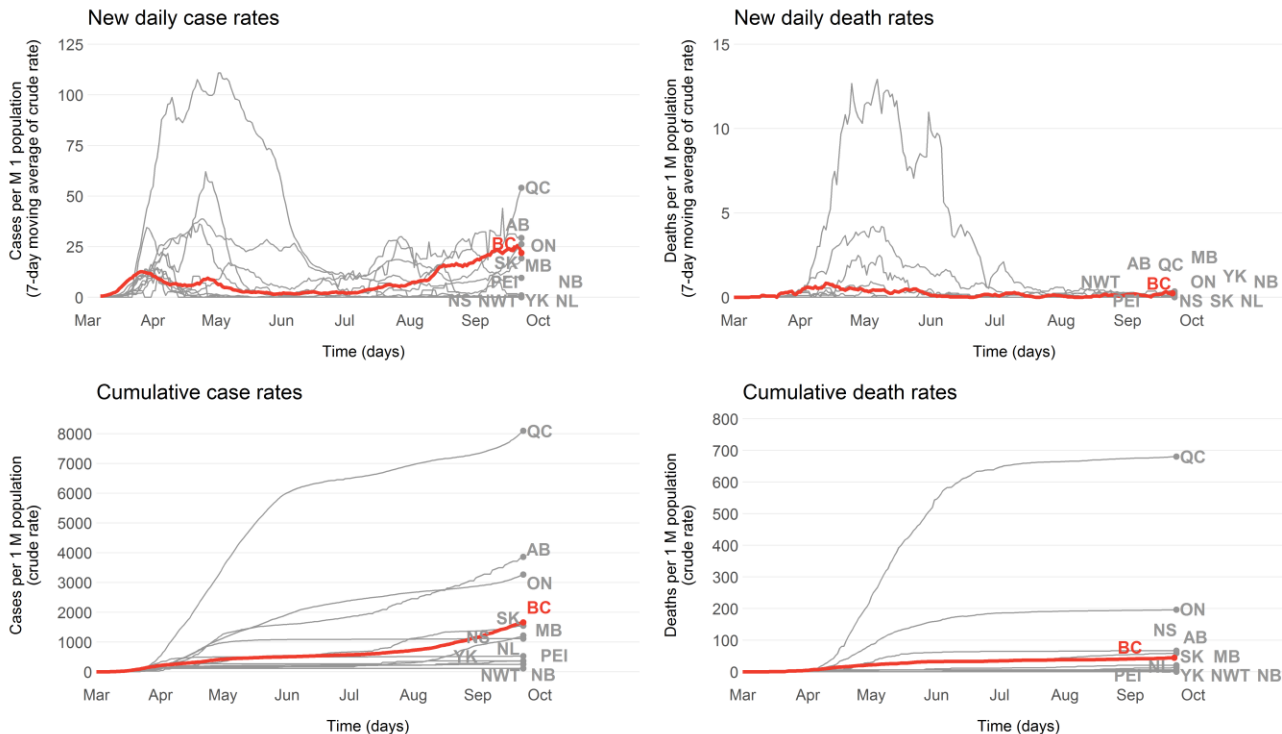


Figure 14: Daily new and cumulative diagnosed COVID-19 case and death rates in Canada



Data sources for international and national epidemiological comparison (all extracted September 24, 2020):
 JHU CSSE for global cases and deaths, and Canadian provincial deaths outside of BC: <https://github.com/CSSEGISandData/COVID-19>
 For Canadian provincial cases: <https://health-infobase.canada.ca/covid-19/epidemiological-summary-covid-19-cases.html>
 BC cases and deaths: http://www.bccdc.ca/health-info/diseases-conditions/covid-19/data?bcgovtm=20200319_GCPE_AM_COVID_4_NOTIFICATION_BCGOV_BCGOV_EN_BC_NOTIFICATION
 Global population denominator from the United Nations