

PICU MRN



PPE

COVID-19 AGMP PPE.

COVID-19 Enhanced Intubation and Extubation PPE (during procedure).



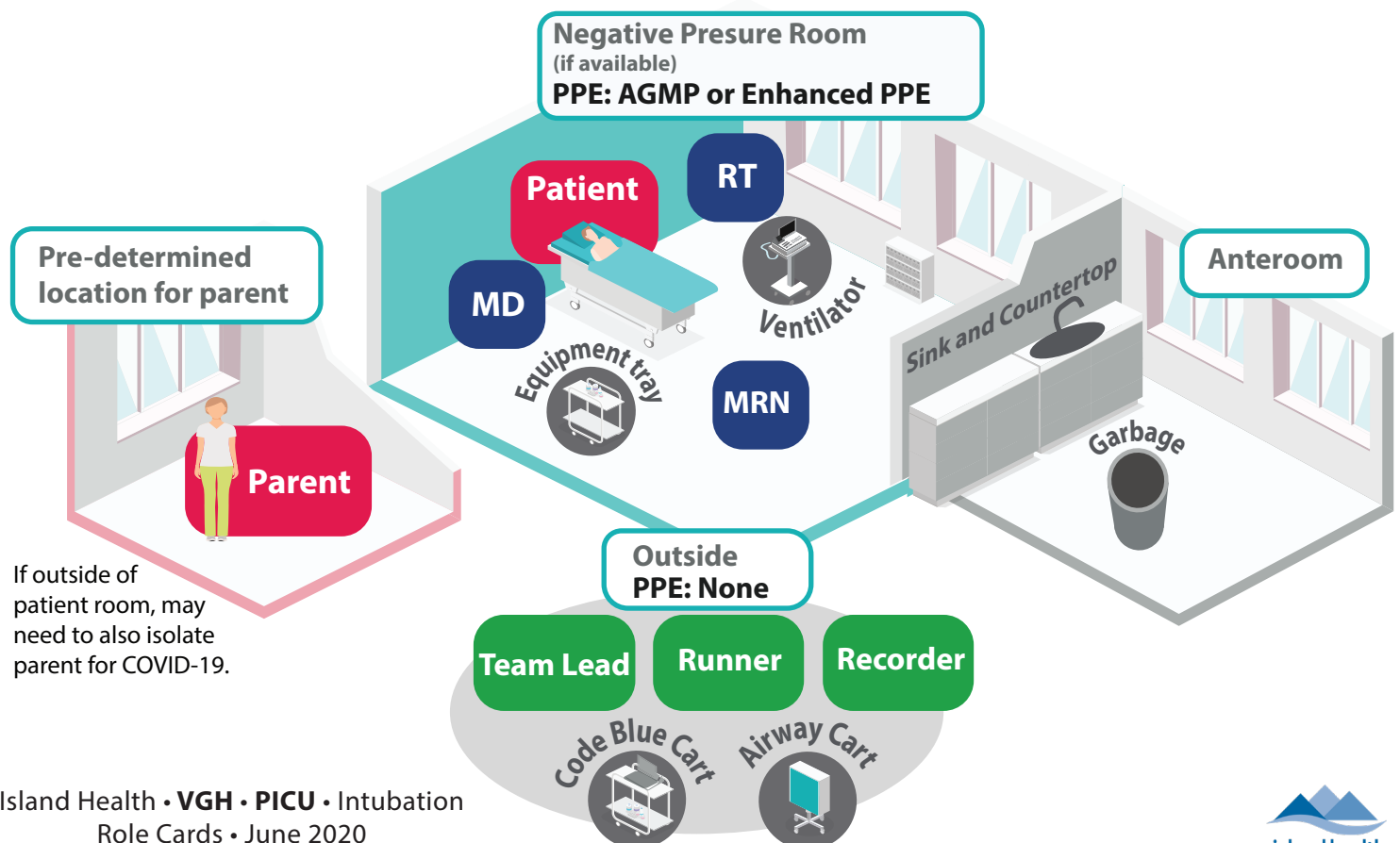
Duties:

- Ensures room is set up, or delegates someone to set up.
- Reviews *Pediatric Intubation Checklist* (on back).
- Communicates clearly with Team Lead and Runner what tasks are being done as shared roles.



Stages of care:

- Room set-up and patient optimization.
- Pre-brief and team huddle.
- Intubation.
- Other procedures.
- Post-intubation care.



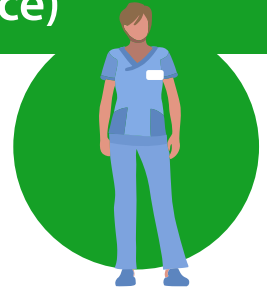
Pediatric Intubation Checklist

IF COVID-19 SUSPECTED OR CONFIRMED, MOST EXPERIENCED PRACTITIONER TO PERFORM THE PROCEDURE. USE THE TECHNIQUE MOST LIKELY TO ACHIEVE FIRST PASS SUCCESS

Review outside the room and perform a TIME OUT				AFTER
<p>TEAM PREPARED?</p> <p>Dosing weight?</p> <p>Allergies?</p> <p>Possible Inside Roles</p> <ul style="list-style-type: none"> • Airway (MD) • Support (RT) • Support (RN) <p>Possible Outside Roles</p> <ul style="list-style-type: none"> • Team Lead (RN) • PPE Supervisor • Recorder • Runner (s) • Family support <p>Determine PPE for Team</p> <p>Location for parent?</p> <p>Other memory aids?</p> <ul style="list-style-type: none"> • PPE Donning/Doffing? • Gear Dump? • Ventilation support? • Clinical Order set? 	<p>ROOM PREPARED?</p> <p>Negative Pressure Room (if available)</p> <p>Monitoring Equipment</p> <ul style="list-style-type: none"> • SpO₂ • ECG • BP (auto q2 min) • ETCO₂ Module <p>Communication device?</p> <ul style="list-style-type: none"> • Voicera, walkie talkie, cell phone, baby monitor etc. <p>Ventilator Ready?</p> <ul style="list-style-type: none"> • Parameters set • In-line suction ready <p>Other procedures to follow?</p> <ul style="list-style-type: none"> • NG/OG tube • Urinary catheter? • Other lines? • Consider deep tracheal sample 	<p>EQUIPMENT PREPARED?</p> <p>Oxygen</p> <ul style="list-style-type: none"> • HME/Viral Filter • Bag valve mask + PEEP valve <p>Suction</p> <ul style="list-style-type: none"> • Rigid catheter <p>Airway equipment</p> <ul style="list-style-type: none"> • Laryngoscope & blade (video preferred) • Cuffed ETT plus extra 0.5 smaller size • Stylet • Syringe for cuff • Tube securing device • Tape • Scissors • Clamp (& gauze) for ETT • Oral airway • LMA <p>Pharmacologic agents</p> <ul style="list-style-type: none"> • Premedication needed? • Induction • Paralytic • Fluids / vasopressor? 	<p>PATIENT PREPARED?</p> <p>Difficult airway anticipated?</p> <ul style="list-style-type: none"> • Back-up plan A- • Back-up plan B- <p>Optimize physiology</p> <ul style="list-style-type: none"> • fluid bolus or vasopressors? <p>Functioning IV/IO</p> <ul style="list-style-type: none"> • 2 if possible • IV start kit/IO available <p>TIME OUT MD to verbalize plan <i>“Does anyone have any questions or concerns?”</i></p> <p>IN ROOM</p> <p>Optimise patient position</p> <p>Pre-oxygenate patient</p> <ul style="list-style-type: none"> • face mask, PEEP valve, 2 hands ≥ 3 minutes <p>Expose patient</p> <p>Perform intubation</p>	<p>POST PROCEDURE</p> <p>Successful intubation</p> <ul style="list-style-type: none"> • Secure ETT • NG or OG tube • Continuous ETCO₂ <p>Ongoing sedation / paralysis</p> <p>Ventilator set</p> <p>Complete other procedures</p> <p>Team to follow DOFFING procedure</p> <p>Clean room when safe</p> <ul style="list-style-type: none"> • Clarify time for each room with infection control • Careful equipment disposal • Decontaminate reusable equipment <p>CXR , Gas (cap, venous or art.)</p> <p>Document procedure</p> <p>Review with accepting PICU</p> <ul style="list-style-type: none"> • PTN: 1.866.233.2337 • VGH PICU: 250.727.4186 • On call MD: 250.727.4212

Team Lead/Also the PPE Supervisor

(CNL/Charge RN *Ideally RN with the most experience)



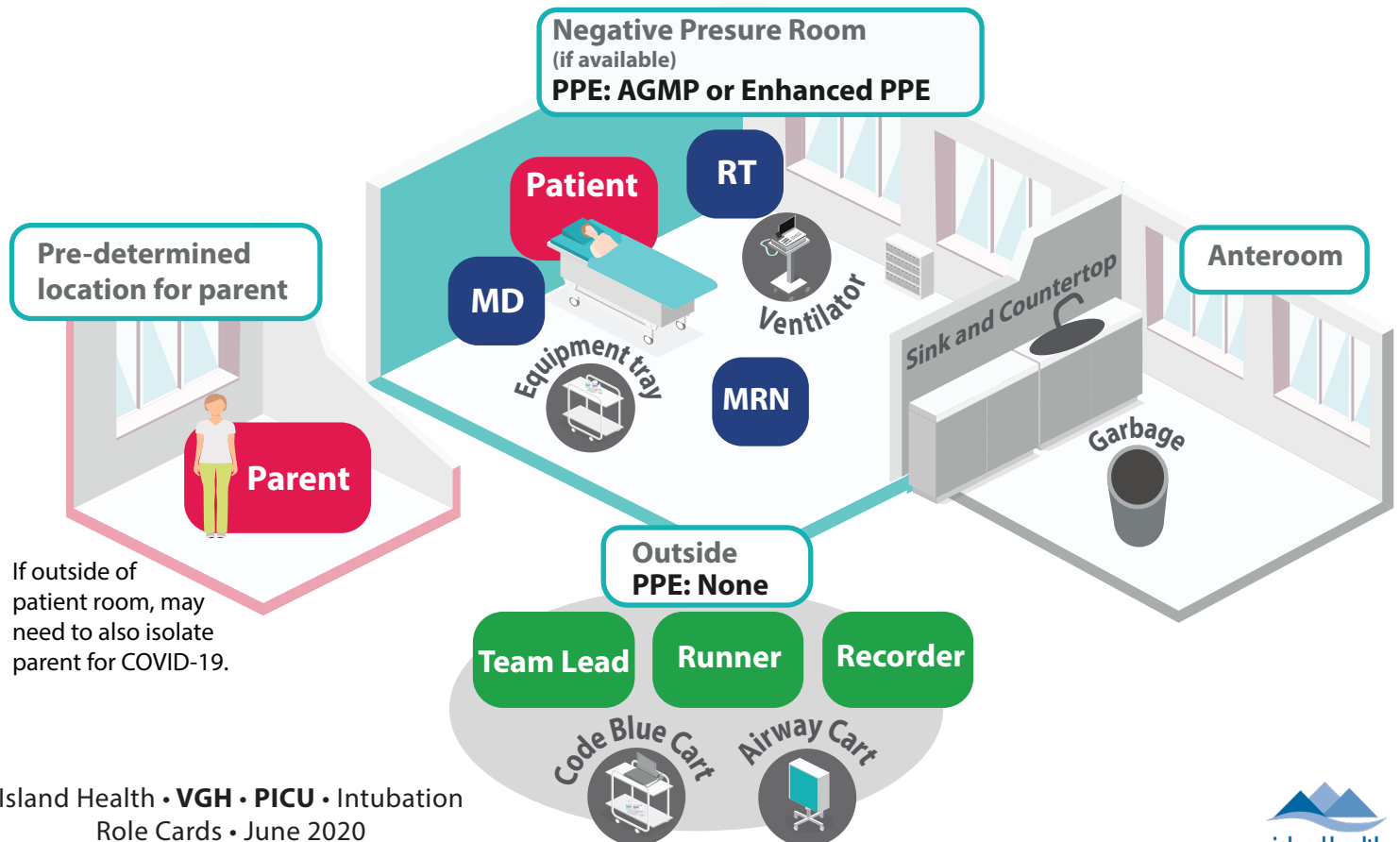
PPE No PPE.

Duties:

- Situation coordinator.
- Ensures protocol followed for **donning and doffing of PPE**.
- Ensures *Pediatric Intubation Checklist* (on back) is accomplished.
- Coordinates all actions within team.
- Ensures closed loop communication.
- Position self in a place to see all.
- **Copy clinical order set (or delegates) – x2** for runner and additional helpers.
- Review copy of **Clinical order set – COVID 19 intubation** and delegate medications needed.
- Ensure parent is supported.

Stages of care:

- Room set-up and patient optimization.
- Pre-brief and team huddle.
- Intubation.
- Other procedures.
- Post-intubation care.



IF COVID-19 SUSPECTED OR CONFIRMED, MOST EXPERIENCED PRACTITIONER TO PERFORM THE PROCEDURE. USE THE TECHNIQUE MOST LIKELY TO ACHIEVE FIRST PASS SUCCESS

Review outside the room and perform a TIME OUT				AFTER
<p>TEAM PREPARED?</p> <p>Dosing weight?</p> <p>Allergies?</p> <p>Possible Inside Roles</p> <ul style="list-style-type: none"> • Airway (MD) • Support (RT) • Support (RN) <p>Possible Outside Roles</p> <ul style="list-style-type: none"> • Team Lead (RN) • PPE Supervisor • Recorder • Runner (s) • Family support <p>Determine PPE for Team</p> <p>Location for parent?</p> <p>Other memory aids?</p> <ul style="list-style-type: none"> • PPE Donning/Doffing? • Gear Dump? • Ventilation support? • Clinical Order set? 	<p>ROOM PREPARED?</p> <p>Negative Pressure Room (if available)</p> <p>Monitoring Equipment</p> <ul style="list-style-type: none"> • SpO₂ • ECG • BP (auto q2 min) • ETCO₂ Module <p>Communication device?</p> <ul style="list-style-type: none"> • Voicera, walkie talkie, cell phone, baby monitor etc. <p>Ventilator Ready?</p> <ul style="list-style-type: none"> • Parameters set • In-line suction ready <p>Other procedures to follow?</p> <ul style="list-style-type: none"> • NG/OG tube • Urinary catheter? • Other lines? • Consider deep tracheal sample 	<p>EQUIPMENT PREPARED?</p> <p>Oxygen</p> <ul style="list-style-type: none"> • HME/Viral Filter • Bag valve mask + PEEP valve <p>Suction</p> <ul style="list-style-type: none"> • Rigid catheter <p>Airway equipment</p> <ul style="list-style-type: none"> • Laryngoscope & blade (video preferred) • Cuffed ETT plus extra 0.5 smaller size • Stylet • Syringe for cuff • Tube securing device • Tape • Scissors • Clamp (& gauze) for ETT • Oral airway • LMA <p>Pharmacologic agents</p> <ul style="list-style-type: none"> • Premedication needed? • Induction • Paralytic • Fluids / vasopressor? 	<p>PATIENT PREPARED?</p> <p>Difficult airway anticipated?</p> <ul style="list-style-type: none"> • Back-up plan A- • Back-up plan B- <p>Optimize physiology</p> <ul style="list-style-type: none"> • fluid bolus or vasopressors? <p>Functioning IV/IO</p> <ul style="list-style-type: none"> • 2 if possible • IV start kit/IO available <p>TIME OUT MD to verbalize plan <i>“Does anyone have any questions or concerns?”</i></p> <p>IN ROOM</p> <p>Optimise patient position</p> <p>Pre-oxygenate patient</p> <ul style="list-style-type: none"> • face mask, PEEP valve, 2 hands ≥ 3 minutes <p>Expose patient</p> <p>Perform intubation</p>	<p>POST PROCEDURE</p> <p>Successful intubation</p> <ul style="list-style-type: none"> • Secure ETT • NG or OG tube • Continuous ETCO₂ <p>Ongoing sedation / paralysis</p> <p>Ventilator set</p> <p>Complete other procedures</p> <p>Team to follow DOFFING procedure</p> <p>Clean room when safe</p> <ul style="list-style-type: none"> • Clarify time for each room with infection control • Careful equipment disposal • Decontaminate reusable equipment <p>CXR , Gas (cap, venous or art.)</p> <p>Document procedure</p> <p>Review with accepting PICU</p> <ul style="list-style-type: none"> • PTN: 1.866.233.2337 • VGH PICU: 250.727.4186 • On call MD: 250.727.4212

MD (airway)

(MRP; Most likely to achieve first pass)



PPE COVID-19 AGMP PPE.
COVID-19 Enhanced Intubation and Extubation PPE (during procedure).



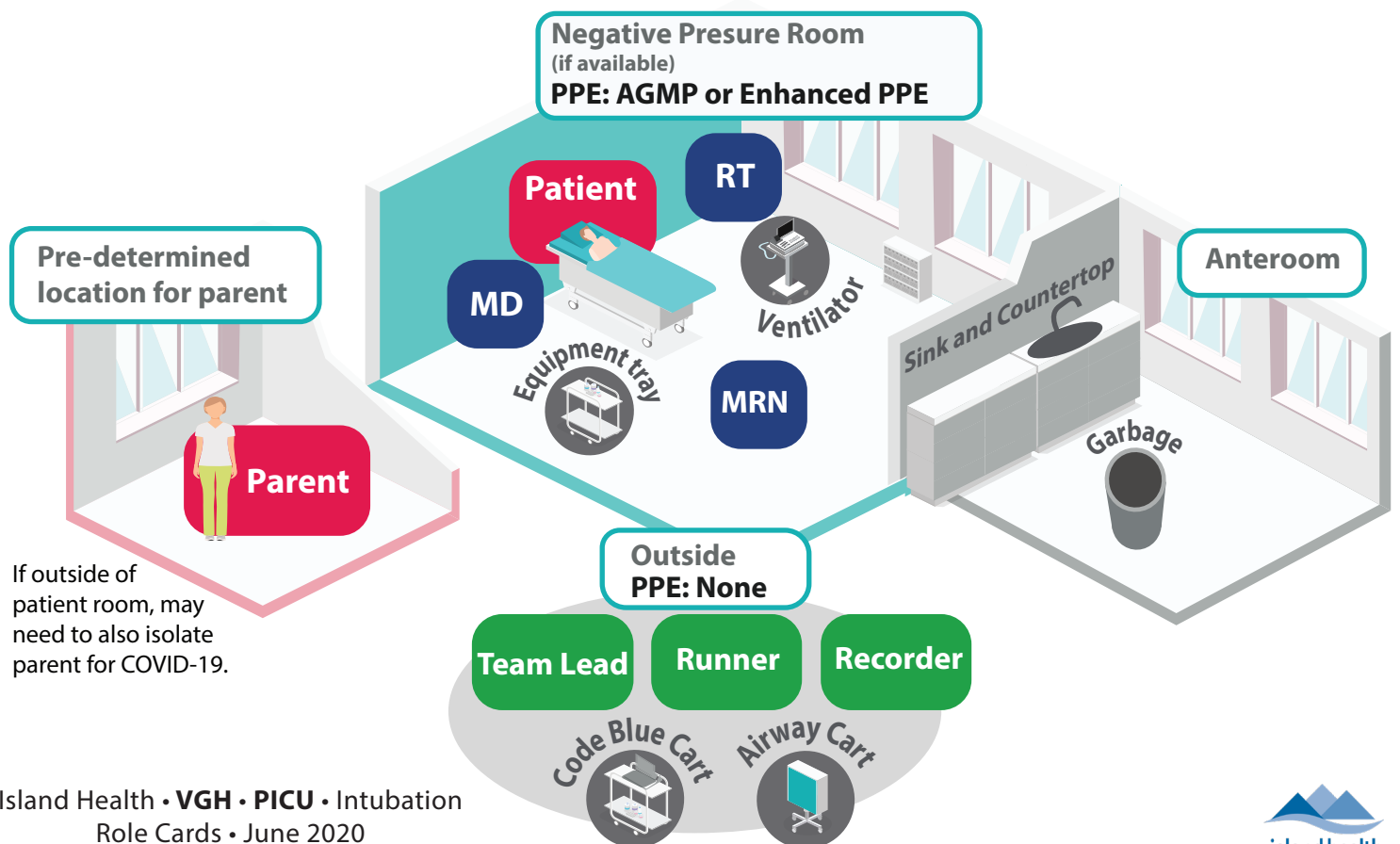
Duties:

- **Completes clinical order set – COVID 19 intubation.**
- Review *Pediatric Intubation Checklist* (on back) prior to intubation with team.
- Determines additional procedures needed.
- Administer intubation drugs (if no RN present).
- Intubation.



Stages of care:

- Room set-up and patient optimization.
- Pre-brief and team huddle.
- Intubation.
- Other procedures.
- Post-intubation care.



Pediatric Intubation Checklist

IF COVID-19 SUSPECTED OR CONFIRMED, MOST EXPERIENCED PRACTITIONER TO PERFORM THE PROCEDURE. USE THE TECHNIQUE MOST LIKELY TO ACHIEVE FIRST PASS SUCCESS

Review outside the room and perform a TIME OUT				AFTER
<p>TEAM PREPARED?</p> <p>Dosing weight?</p> <p>Allergies?</p> <p>Possible Inside Roles</p> <ul style="list-style-type: none"> • Airway (MD) • Support (RT) • Support (RN) <p>Possible Outside Roles</p> <ul style="list-style-type: none"> • Team Lead (RN) • PPE Supervisor • Recorder • Runner (s) • Family support <p>Determine PPE for Team</p> <p>Location for parent?</p> <p>Other memory aids?</p> <ul style="list-style-type: none"> • PPE Donning/Doffing? • Gear Dump? • Ventilation support? • Clinical Order set? 	<p>ROOM PREPARED?</p> <p>Negative Pressure Room (if available)</p> <p>Monitoring Equipment</p> <ul style="list-style-type: none"> • SpO₂ • ECG • BP (auto q2 min) • ETCO₂ Module <p>Communication device?</p> <ul style="list-style-type: none"> • Voicera, walkie talkie, cell phone, baby monitor etc. <p>Ventilator Ready?</p> <ul style="list-style-type: none"> • Parameters set • In-line suction ready <p>Other procedures to follow?</p> <ul style="list-style-type: none"> • NG/OG tube • Urinary catheter? • Other lines? • Consider deep tracheal sample 	<p>EQUIPMENT PREPARED?</p> <p>Oxygen</p> <ul style="list-style-type: none"> • HME/Viral Filter • Bag valve mask + PEEP valve <p>Suction</p> <ul style="list-style-type: none"> • Rigid catheter <p>Airway equipment</p> <ul style="list-style-type: none"> • Laryngoscope & blade (video preferred) • Cuffed ETT plus extra 0.5 smaller size • Stylet • Syringe for cuff • Tube securing device • Tape • Scissors • Clamp (& gauze) for ETT • Oral airway • LMA <p>Pharmacologic agents</p> <ul style="list-style-type: none"> • Premedication needed? • Induction • Paralytic • Fluids / vasopressor? 	<p>PATIENT PREPARED?</p> <p>Difficult airway anticipated?</p> <ul style="list-style-type: none"> • Back-up plan A- • Back-up plan B- <p>Optimize physiology</p> <ul style="list-style-type: none"> • fluid bolus or vasopressors? <p>Functioning IV/IO</p> <ul style="list-style-type: none"> • 2 if possible • IV start kit/IO available <p>TIME OUT MD to verbalize plan <i>“Does anyone have any questions or concerns?”</i></p> <p>IN ROOM</p> <p>Optimise patient position</p> <p>Pre-oxygenate patient</p> <ul style="list-style-type: none"> • face mask, PEEP valve, 2 hands ≥ 3 minutes <p>Expose patient</p> <p>Perform intubation</p>	<p>POST PROCEDURE</p> <p>Successful intubation</p> <ul style="list-style-type: none"> • Secure ETT • NG or OG tube • Continuous ETCO₂ <p>Ongoing sedation / paralysis</p> <p>Ventilator set</p> <p>Complete other procedures</p> <p>Team to follow DOFFING procedure</p> <p>Clean room when safe</p> <ul style="list-style-type: none"> • Clarify time for each room with infection control • Careful equipment disposal • Decontaminate reusable equipment <p>CXR , Gas (cap, venous or art.)</p> <p>Document procedure</p> <p>Review with accepting PICU</p> <ul style="list-style-type: none"> • PTN: 1.866.233.2337 • VGH PICU: 250.727.4186 • On call MD: 250.727.4212

RT



PPE

COVID-19 AGMP PPE.

COVID-19 Enhanced Intubation and Extubation PPE (during procedure).



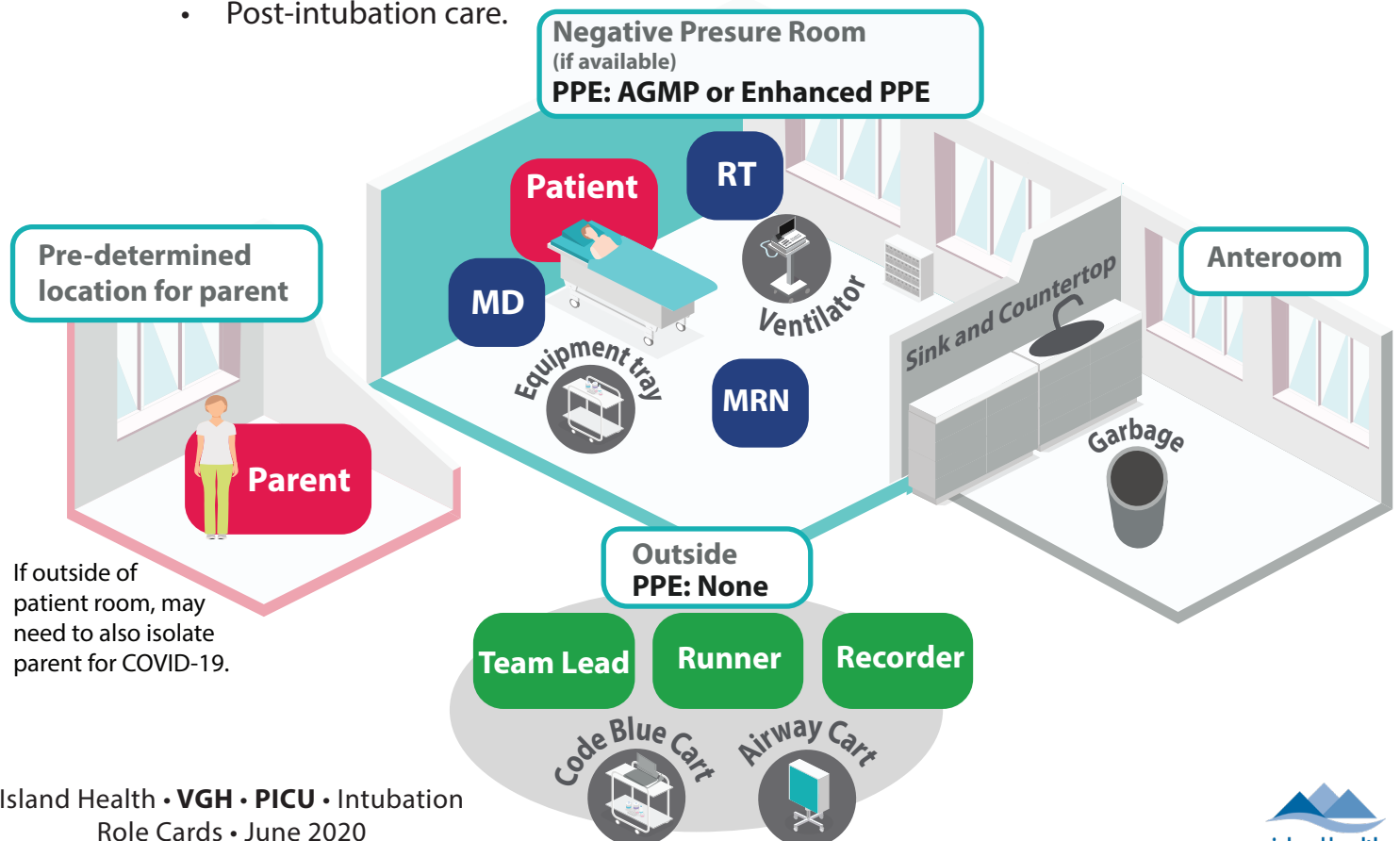
Duties:

- Ensure **airway equipment** is present and bring into room (consider use of **intubation drop sheet and colour-coded ventilation setting sheet**).
- **Review** *Pediatric Intubation Checklist* (on back).
- Set up **ventilator** in room.
- Ensures CO2 module is set up.
- Manages airway or delegates and monitors managements of airway while preparing intubation equipment.



Stages of care:

- Room set-up and patient optimization.
- Pre-brief and team huddle.
- Intubation.
- Other procedures.
- Post-intubation care.



Pediatric Intubation Checklist

IF COVID-19 SUSPECTED OR CONFIRMED, MOST EXPERIENCED PRACTITIONER TO PERFORM THE PROCEDURE. USE THE TECHNIQUE MOST LIKELY TO ACHIEVE FIRST PASS SUCCESS

Review outside the room and perform a TIME OUT				AFTER
<p>TEAM PREPARED?</p> <p>Dosing weight?</p> <p>Allergies?</p> <p>Possible Inside Roles</p> <ul style="list-style-type: none"> • Airway (MD) • Support (RT) • Support (RN) <p>Possible Outside Roles</p> <ul style="list-style-type: none"> • Team Lead (RN) • PPE Supervisor • Recorder • Runner (s) • Family support <p>Determine PPE for Team</p> <p>Location for parent?</p> <p>Other memory aids?</p> <ul style="list-style-type: none"> • PPE Donning/Doffing? • Gear Dump? • Ventilation support? • Clinical Order set? 	<p>ROOM PREPARED?</p> <p>Negative Pressure Room (if available)</p> <p>Monitoring Equipment</p> <ul style="list-style-type: none"> • SpO₂ • ECG • BP (auto q2 min) • ETCO₂ Module <p>Communication device?</p> <ul style="list-style-type: none"> • Voicera, walkie talkie, cell phone, baby monitor etc. <p>Ventilator Ready?</p> <ul style="list-style-type: none"> • Parameters set • In-line suction ready <p>Other procedures to follow?</p> <ul style="list-style-type: none"> • NG/OG tube • Urinary catheter? • Other lines? • Consider deep tracheal sample 	<p>EQUIPMENT PREPARED?</p> <p>Oxygen</p> <ul style="list-style-type: none"> • HME/Viral Filter • Bag valve mask + PEEP valve <p>Suction</p> <ul style="list-style-type: none"> • Rigid catheter <p>Airway equipment</p> <ul style="list-style-type: none"> • Laryngoscope & blade (video preferred) • Cuffed ETT plus extra 0.5 smaller size • Stylet • Syringe for cuff • Tube securing device • Tape • Scissors • Clamp (& gauze) for ETT • Oral airway • LMA <p>Pharmacologic agents</p> <ul style="list-style-type: none"> • Premedication needed? • Induction • Paralytic • Fluids / vasopressor? 	<p>PATIENT PREPARED?</p> <p>Difficult airway anticipated?</p> <ul style="list-style-type: none"> • Back-up plan A- • Back-up plan B- <p>Optimize physiology</p> <ul style="list-style-type: none"> • fluid bolus or vasopressors? <p>Functioning IV/IO</p> <ul style="list-style-type: none"> • 2 if possible • IV start kit/IO available <p>TIME OUT MD to verbalize plan <i>“Does anyone have any questions or concerns?”</i></p> <p>IN ROOM</p> <p>Optimise patient position</p> <p>Pre-oxygenate patient</p> <ul style="list-style-type: none"> • face mask, PEEP valve, 2 hands ≥ 3 minutes <p>Expose patient</p> <p>Perform intubation</p>	<p>POST PROCEDURE</p> <p>Successful intubation</p> <ul style="list-style-type: none"> • Secure ETT • NG or OG tube • Continuous ETCO₂ <p>Ongoing sedation / paralysis</p> <p>Ventilator set</p> <p>Complete other procedures</p> <p>Team to follow DOFFING procedure</p> <p>Clean room when safe</p> <ul style="list-style-type: none"> • Clarify time for each room with infection control • Careful equipment disposal • Decontaminate reusable equipment <p>CXR , Gas (cap, venous or art.)</p> <p>Document procedure</p> <p>Review with accepting PICU</p> <ul style="list-style-type: none"> • PTN: 1.866.233.2337 • VGH PICU: 250.727.4186 • On call MD: 250.727.4212

Runner (PICU or PEDS)



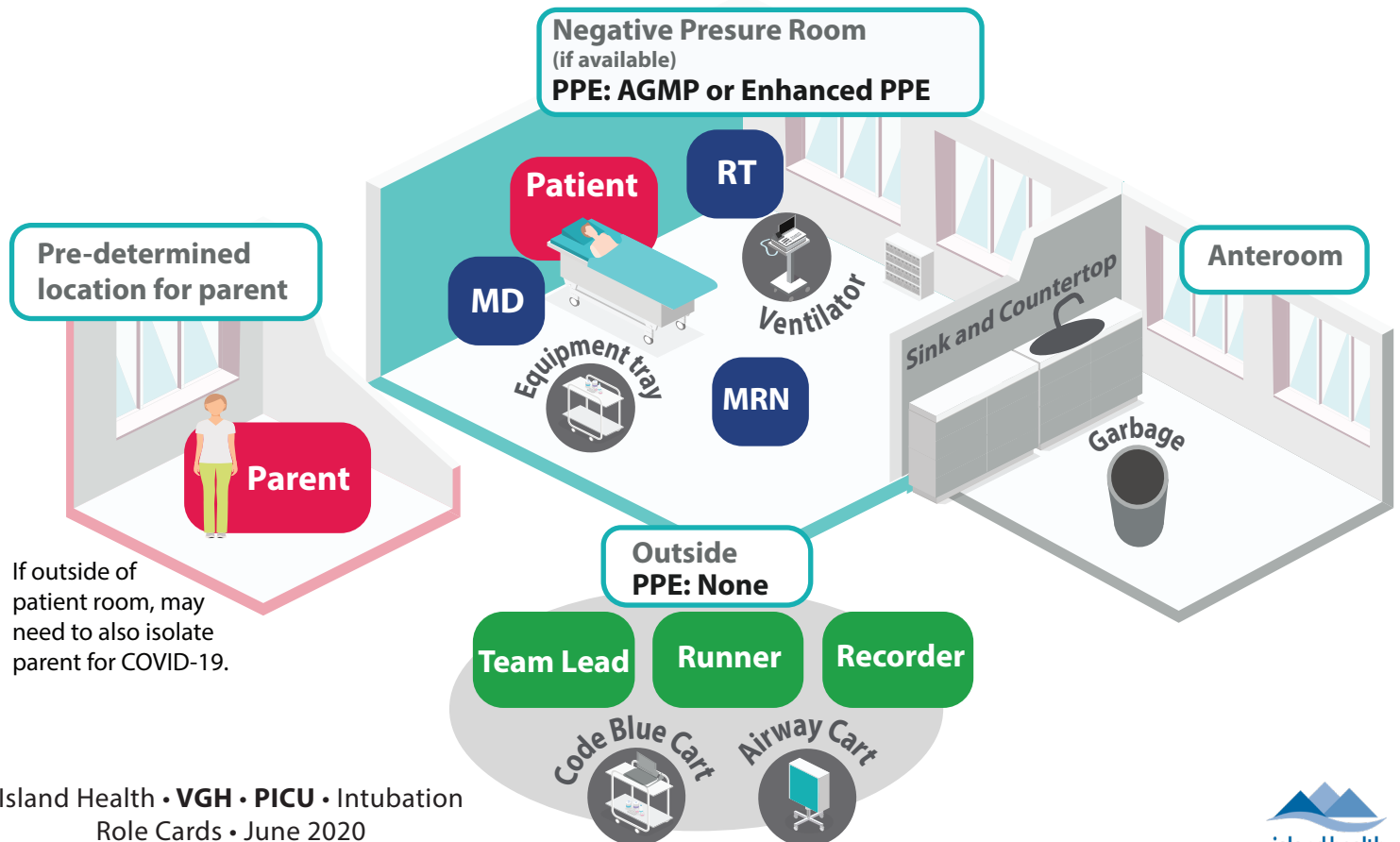
PPE No PPE.

Duties:

- Communicates clearly, with MRN in the room and Team Lead, what tasks are being done as shared roles.
- Ensures room is set up, or delegates someone to set up.
- Reviews *Pediatric Intubation Checklist* (on back).
- Review **Copy of clinical order set – COVID 19 intubation.**
- Prepares or delegates meds for intubations (**pre-ordered drug sheet** from MD).
- Ensure IV tree ordered.
- Prepare infusions, prime lines and set up on pump. (Use COVID cart for supplies and surface for prep outside of room.)

Stages of care:

- Room set-up and patient optimization.
- Pre-brief and team huddle.
- Intubation.
- Other procedures.
- Post-intubation care.



If outside of patient room, may need to also isolate parent for COVID-19.

IF COVID-19 SUSPECTED OR CONFIRMED, MOST EXPERIENCED PRACTITIONER TO PERFORM THE PROCEDURE. USE THE TECHNIQUE MOST LIKELY TO ACHIEVE FIRST PASS SUCCESS

Review outside the room and perform a TIME OUT				AFTER
<p>TEAM PREPARED?</p> <p>Dosing weight?</p> <p>Allergies?</p> <p>Possible Inside Roles</p> <ul style="list-style-type: none"> • Airway (MD) • Support (RT) • Support (RN) <p>Possible Outside Roles</p> <ul style="list-style-type: none"> • Team Lead (RN) • PPE Supervisor • Recorder • Runner (s) • Family support <p>Determine PPE for Team</p> <p>Location for parent?</p> <p>Other memory aids?</p> <ul style="list-style-type: none"> • PPE Donning/Doffing? • Gear Dump? • Ventilation support? • Clinical Order set? 	<p>ROOM PREPARED?</p> <p>Negative Pressure Room (if available)</p> <p>Monitoring Equipment</p> <ul style="list-style-type: none"> • SpO₂ • ECG • BP (auto q2 min) • ETCO₂ Module <p>Communication device?</p> <ul style="list-style-type: none"> • Voicera, walkie talkie, cell phone, baby monitor etc. <p>Ventilator Ready?</p> <ul style="list-style-type: none"> • Parameters set • In-line suction ready <p>Other procedures to follow?</p> <ul style="list-style-type: none"> • NG/OG tube • Urinary catheter? • Other lines? • Consider deep tracheal sample 	<p>EQUIPMENT PREPARED?</p> <p>Oxygen</p> <ul style="list-style-type: none"> • HME/Viral Filter • Bag valve mask + PEEP valve <p>Suction</p> <ul style="list-style-type: none"> • Rigid catheter <p>Airway equipment</p> <ul style="list-style-type: none"> • Laryngoscope & blade (video preferred) • Cuffed ETT plus extra 0.5 smaller size • Stylet • Syringe for cuff • Tube securing device • Tape • Scissors • Clamp (& gauze) for ETT • Oral airway • LMA <p>Pharmacologic agents</p> <ul style="list-style-type: none"> • Premedication needed? • Induction • Paralytic • Fluids / vasopressor? 	<p>PATIENT PREPARED?</p> <p>Difficult airway anticipated?</p> <ul style="list-style-type: none"> • Back-up plan A- • Back-up plan B- <p>Optimize physiology</p> <ul style="list-style-type: none"> • fluid bolus or vasopressors? <p>Functioning IV/IO</p> <ul style="list-style-type: none"> • 2 if possible • IV start kit/IO available <p>TIME OUT MD to verbalize plan <i>“Does anyone have any questions or concerns?”</i></p> <p>IN ROOM</p> <p>Optimise patient position</p> <p>Pre-oxygenate patient</p> <ul style="list-style-type: none"> • face mask, PEEP valve, 2 hands ≥ 3 minutes <p>Expose patient</p> <p>Perform intubation</p>	<p>POST PROCEDURE</p> <p>Successful intubation</p> <ul style="list-style-type: none"> • Secure ETT • NG or OG tube • Continuous ETCO₂ <p>Ongoing sedation / paralysis</p> <p>Ventilator set</p> <p>Complete other procedures</p> <p>Team to follow DOFFING procedure</p> <p>Clean room when safe</p> <ul style="list-style-type: none"> • Clarify time for each room with infection control • Careful equipment disposal • Decontaminate reusable equipment <p>CXR , Gas (cap, venous or art.)</p> <p>Document procedure</p> <p>Review with accepting PICU</p> <ul style="list-style-type: none"> • PTN: 1.866.233.2337 • VGH PICU: 250.727.4186 • On call MD: 250.727.4212

Recorder

(RN - Prefer PICU or Step up)



PPE No PPE.

Duties:

- Support Team Lead and Runner prior to procedure.
- Complete all documentation.
- Before AGMP initiated ensure a mode of communication is set up both inside and outside of room.

Stages of care:

- Room set-up and patient optimization.
- Pre-brief and team huddle.
- Intubation.
- Other procedures.
- Post-intubation care.

