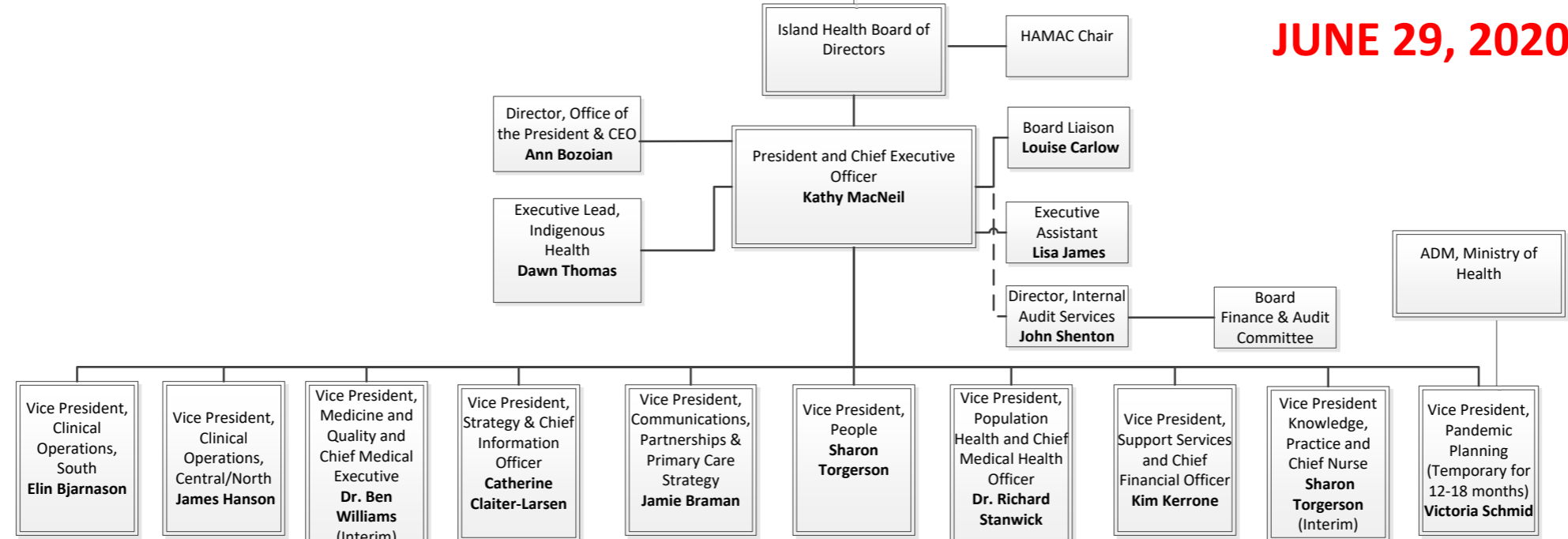


Island Health Executive Team

**FUTURE STATE
JUNE 29, 2020**



- Clinical Services for South Island
- Acute Care
 - Home Care/Support
 - Palliative Care/End of Life
 - Primary Care
 - Public Health
 - Seniors Care
 - Island Wide Health Programs
 - Critical Care
 - Patient Flow & Transitions
 - Adult ICU
 - Brain Health
 - Heart Health
 - Renal
 - Adult Rehab
 - Restorative Wellness
 - Surgical Services
 - Trauma
 - Ambulatory & Medicine
 - Lab
 - Medical Imaging
 - Oncology
 - Emergency

- Clinical Services for Central/North Island
- Acute Care
 - Home Care/Support
 - Palliative Care/End of Life
 - Primary Care
 - Public Health
 - Seniors Care
 - Island Wide Health Programs
 - CYF- MHSU
 - CYF – Maternity/ Peds
 - Palliative/End of Life
 - MHSU – SI
 - MHSU – Centre/NI
 - Rural/Remote
 - Seniors Strategy
 - Residential Services
 - Home Care Strategy
 - Food Services
 - Housekeeping
 - Protection Services
 - Portering

- Medical Affairs (Medical Staff Support/ Medical Staff Practice Design Support)
- Academic & Clinical Engagement
- Quality, Safety & Improvement
- Medical Governance (Credentialing, Privileging & Recruitment, Clinical Improvement & Medical Staff Development)
- Executive Medical Directors

- IM/IT
- Decision Support (Including Health Records)
- Planning
- Med Safety
- Pharmacy
- IHealth
- Clinical Informatics
- Project Delivery
- Health Information Management
- Clinical Systems Engineering
- Innovation Acceleration
- Virtual Care

- Primary Care Strategy
- Communications & Patient & Public Engagement
- Partner Engagement & Internal Communications
- Digital Engagement & Innovation
- Distributed Multi Media Systems
- Print Services
- Learning & Performance Support
- Foundation, Auxiliary & Volunteer Engagement

- HR Centre of Expertise (LR)
- Talent Acquisition, Onboarding & Retention
- Occupational Health & Safety
- HR Client Services & Organizational Development
- Enterprise Change Management
- Scheduling
- HR Access
- Employee Records & Benefits

- Medical Health Officers
- Public Health
- Population Health Planning & Surveillance
- Environmental Public Health

- Facilities Management
- Logistics & Operations
- P3s
- PHSA Supply Chain
- HEMBC
- Budgets & Financial Analysis
- Capital Management & Finance Projects
- Value Optimization
- Timekeeping & Payroll
- Financial Operations
- Risk Management & Legal
- Business Systems
- Info Stewardship, Access & Privacy

- Professional Practice
- Student Placement
- NPs
- Clinical Simulation Learning
- Research/EMD

- Experience