

community health facts 2013

Campbell River

Demographics

The Campbell River area is home to approximately 42,000 people.

- 9% identify as Aboriginal.
- 7% are aged 75 and over.
- The population is expected to grow by 14% over the next 20 years.
- The over 75 population is expected to more than double.

Health and Wellbeing

Compared to the Island Health as a whole, Campbell River has (based on most recent data available):

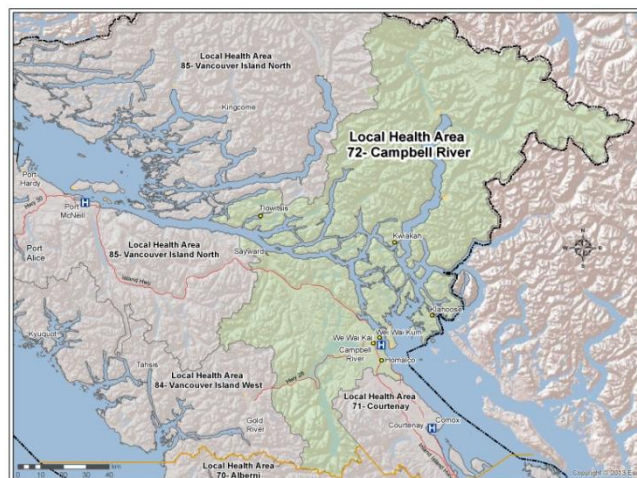
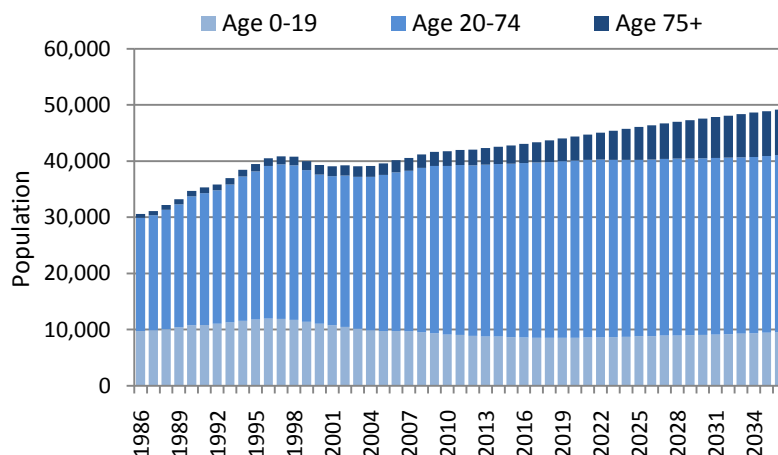
- A higher birth rate.
- A higher teen birth rate.
- A higher rate of maternal smoking.
- A lower life expectancy (79.9 years).
- A higher rate of tobacco-related hospitalizations.
- A higher rate of death due to illicit drug use, motor-vehicle accidents and diabetes.
- Similar prevalence of leading chronic conditions including hypertension, depression/anxiety, and asthma.

Social Determinants of Health

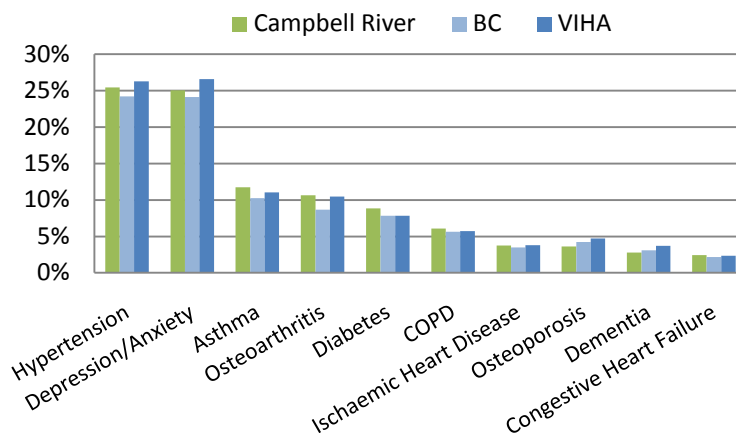
Housing, employment, education and social support can have a big impact on the health of our communities and our ability to make healthy lifestyle choices. Compared to Island Health overall (based on most recent data available):

- *Economic Wellbeing* – Campbell River has a higher unemployment rate, and a lower average income for female lone-parent families.
- *Education* – Campbell River had a similar percentage of 18 year olds graduating high school, but a lower percentage of adults aged 25-54 with a high school certificate.

Campbell River Population Change



Prevalence of Chronic Conditions, 2010/11



Social Determinants of Health *(continued)*

- *Healthy Development* – Campbell River has a similar rate of children in care, but a higher rate of children in need of protection.
- *Crime* – Campbell River has a similar rate of serious crime, but a lower rate of serious juvenile crime.

Health Services

Campbell River is served by the Campbell River General Hospital, the Campbell River Health Unit, and has 191 residential care beds and 54 assisted living beds spread over four sites. Additional available services include public health, home and community care, and mental health and substance use.

Every year, Campbell River residents have about 8,500 hospital admissions, and 17,700 unscheduled emergency department visits.

Of the 8,500 admissions in 2011/12:

- 68% were to Campbell River General Hospital, and
- 14% were to the nearby St. Joseph’s Hospital.

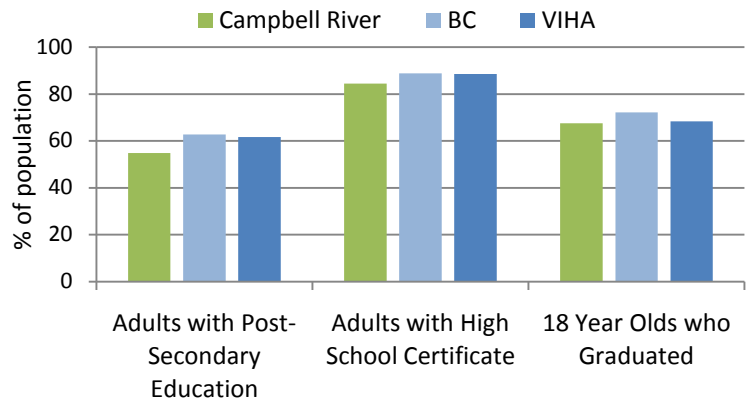
Of the 20,800 unscheduled emergency visits in 2012/13:

- 95% were to Campbell River General Hospital.
- 33% were for those over the age of 60.

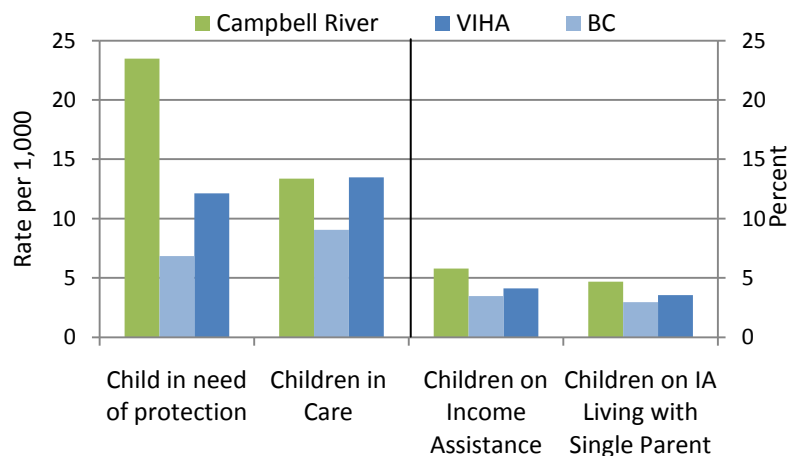
For more information on Island Health Services in your region, please visit:

<http://www.viha.ca/locations/>

Education Statistics



Healthy Development Statistics



Campbell River Resident Cases by Hospital

