

community health facts 2013

Port Alberni

Demographics

Port Alberni is home to approximately 25,440 people.

- 12% identify as Aboriginal.
- Local Health Area 70 – Alberni which also includes Tofino, Ucluelet, Ahousat and Bamfield is home to approximately 31,500 people.
 - 8% are aged 75 and over.
 - The total population is not expected to change much over the next 20 years.
 - The over 75 population is expected to nearly double.

Health and Wellbeing

Compared to the Island Health region as a whole, Local Health Area 70 – Alberni residents have (based on the most recent data available):

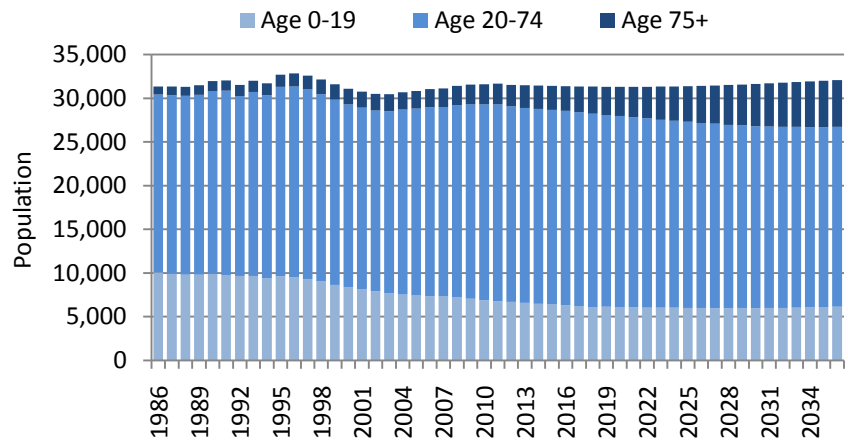
- A higher birth rate and a higher teen birth rate.
- Higher rates of preterm births and low birth weight babies.
- A lower life expectancy (78 years).
- A higher rate of death due to diabetes, alcohol-related causes, and motor vehicle accidents.
- Similar to the Island Health region, leading chronic conditions include hypertension, depression/anxiety, osteoarthritis and asthma.

Social Determinants of Health

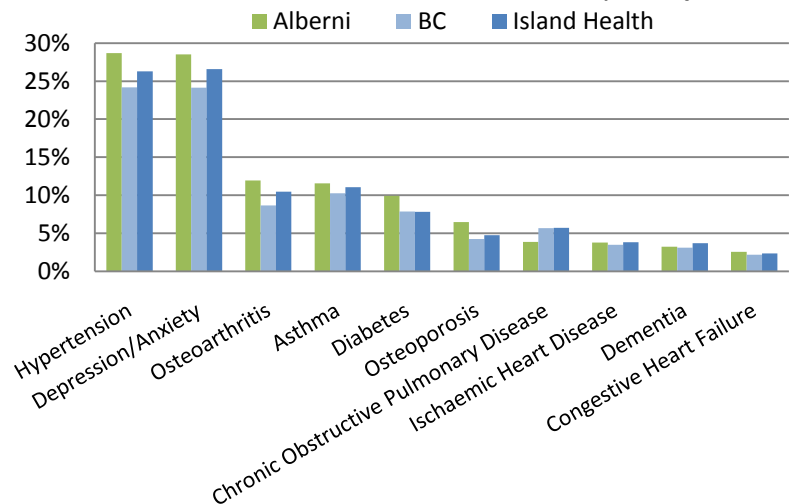
Housing, employment, education and social support can have a big impact on the health of our communities and our ability to make healthy lifestyle choices. Compared to Island Health overall (based on most recent data available):

- *Economic Wellbeing* - Port Alberni has a higher unemployment rate and lower median family income.
- *Education* –Port Alberni has a lower percentage of 15-24 Year-Olds who graduated from high school, and a lower percentage of adults aged 25-64 with post-secondary education.

Local Health Area 70 - Alberni Population Growth



Prevalence of Chronic Conditions among Local Health Area 70 - Alberni Residents, 2010/11



Social Determinants of Health *(continued)*

- *Child Health* – Local Health Area 70 has a higher rate of children hospitalized for respiratory illness and a higher infant mortality rate.
- *Crime* –Local Health Area 70 has a higher crime rate, including a motor vehicle theft, serious crime and serious juvenile crime, but it has a lower rate of deaths due to illicit drug use.

Health Services

Port Alberni is served by West Coast General Hospital, and the Port Alberni Child, Youth and Family Health Unit. The area has 192 residential care beds and 36 assisted living beds spread over six sites. Additional services available include public health, home and community care, and mental health and substance use.

Every year, Port Alberni residents have about 6,000 hospital admissions, and 18,000 unscheduled emergency department visits.

Of the 6,000 admissions in 2011/12:

- 61% were to West Coast General Hospital,
- 21% were to Nanaimo Regional General Hospital, and
- 18% were to other hospitals

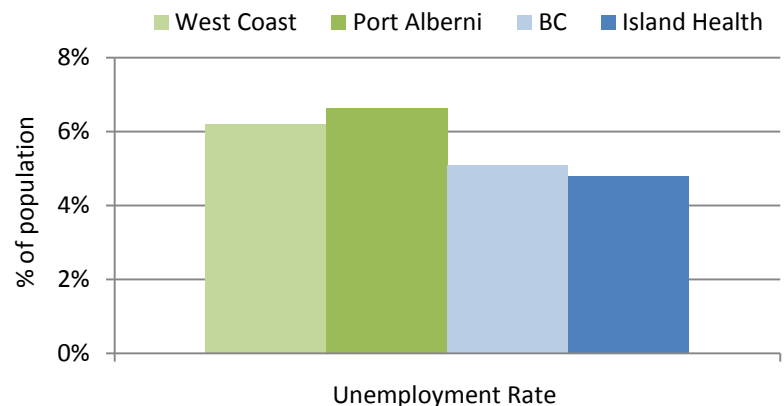
Of the 18,000 unscheduled emergency visits in 2012/13:

- 95% were to West Coast General Hospital
- 2% to Nanaimo Regional General Hospital
- 3% to other hospitals

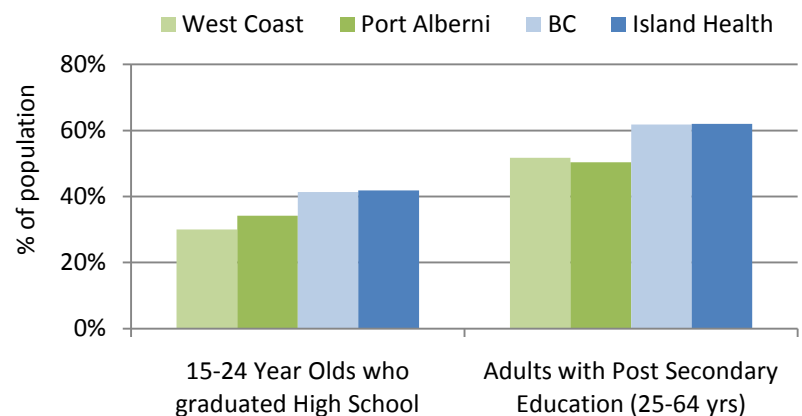
For more information on Island Health Services in your region, please visit:

<http://www.viha.ca/locations/>

Unemployment Statistics



Education Statistics



Port Alberni Resident Cases by Hospital

