

Nanaimo Regional General Hospital

Master Site Plan

Presentation to the NRHD

Chris Sullivan

Director, Capital Planning

March 27, 2012

What is a Master Site Plan?

- ◆ Role and scope of services
- ◆ Site assessment
- ◆ Compare existing buildings to future needs
- ◆ Potential options

Role of Regional Hospital

- ◆ Only designated regional hospital
- ◆ Core specialty services
- ◆ More sub-specialties than community hospitals

What was the outcome of Role & Scope of Service Review?

- ◆ Providing the right services
- ◆ Regional role can be further developed
- ◆ Need to increase capacity

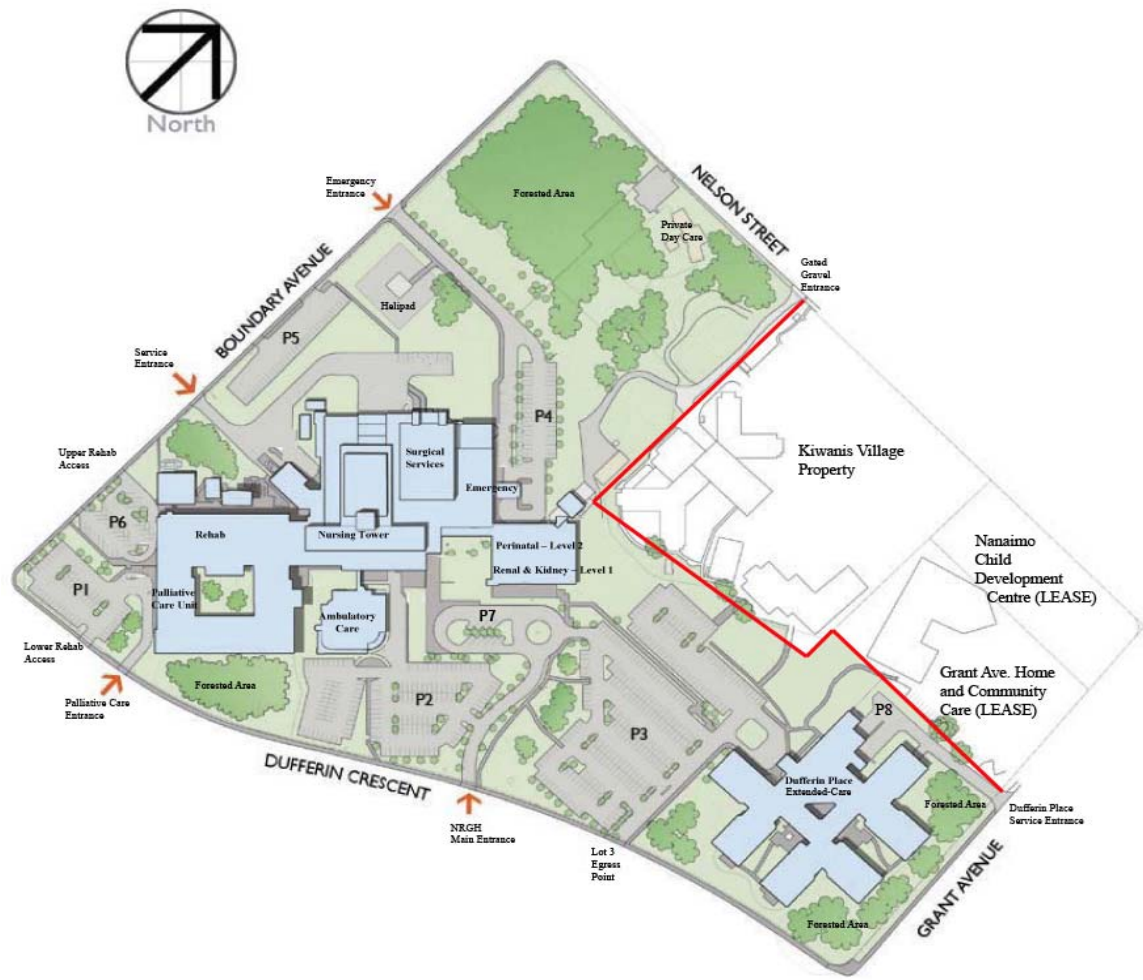
How much additional capacity?

- ◆ Existing Building
 - ▶ 35,550 m²
- ◆ Desired Expansion Need to 2021
 - ▶ 54,390 m²
- ◆ Increase of 18,840 m² (35%)

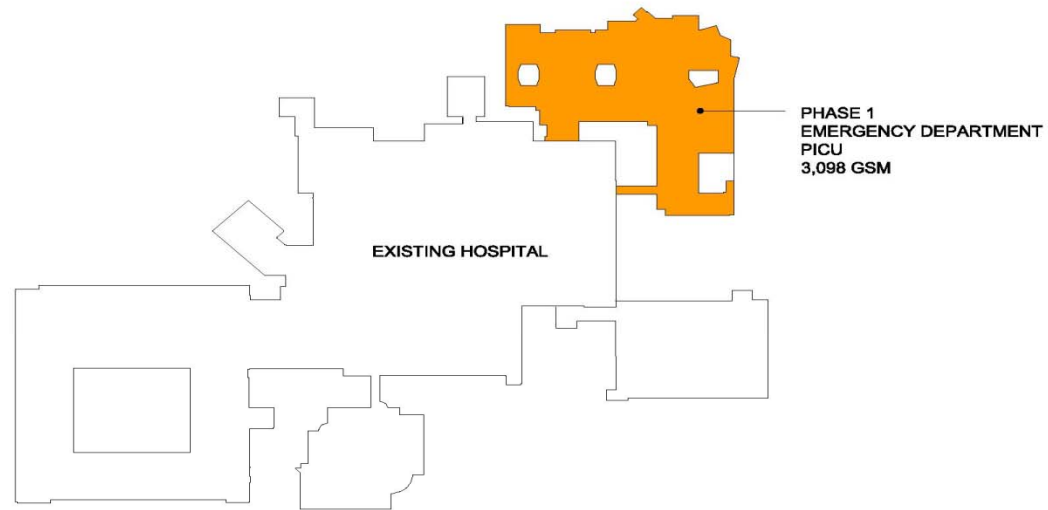
Demonstration Plan

- ◆ Based on critical principles including:
 - ▶ Identifiable entries with easy access to parking
 - ▶ Intuitive wayfinding
 - ▶ Separation of flows
 - ▶ Zoning of services
 - ▶ Layouts that achieve operational efficiency
 - ▶ Providing flexible futures

Existing Site Plan

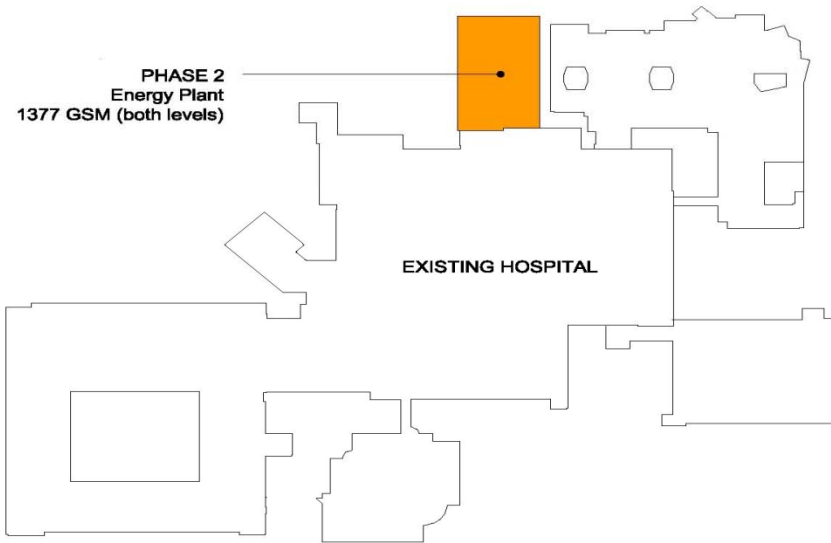


Phase 1 New ED/PES/PIC



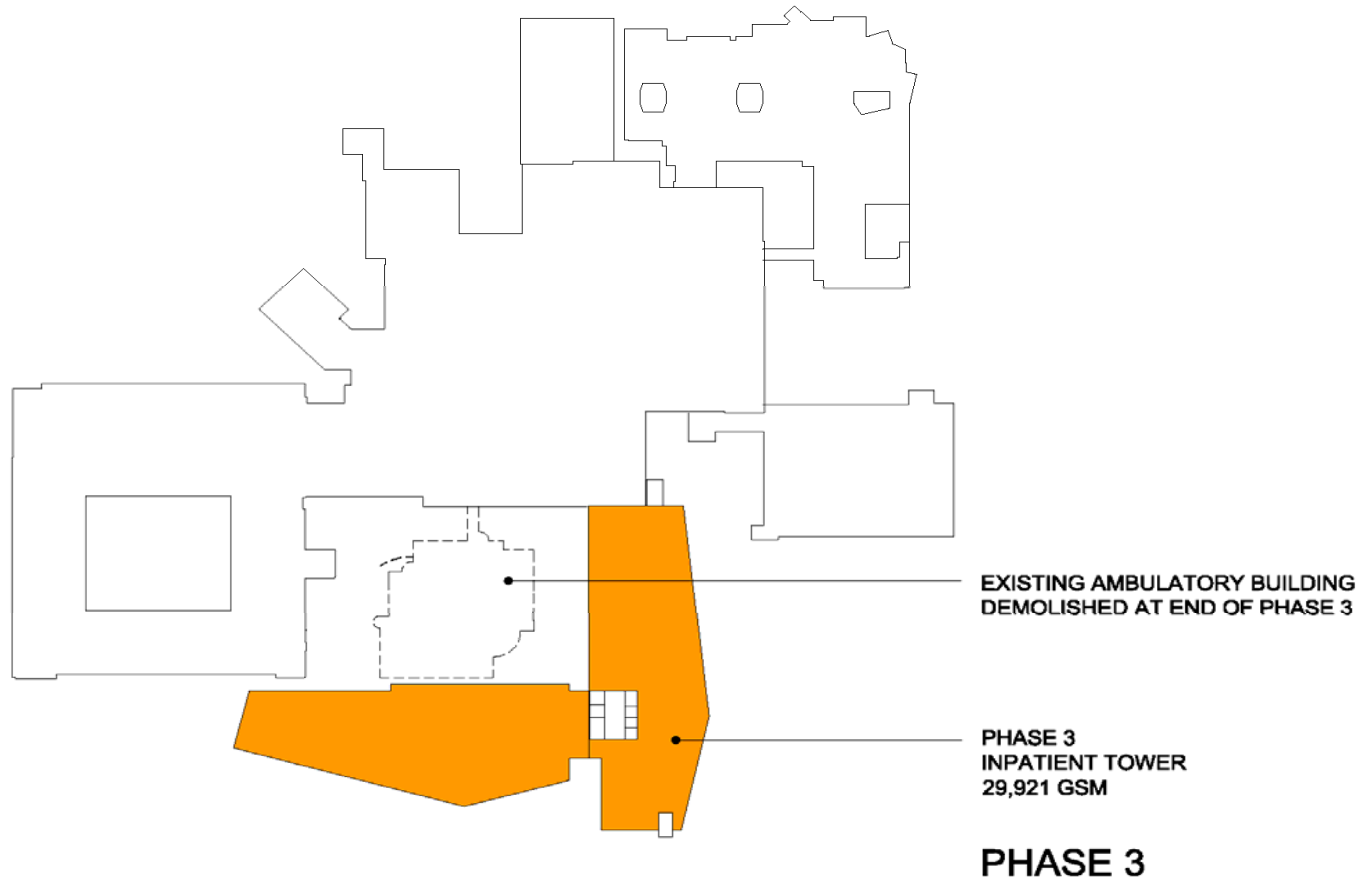
PHASE 1

Phase 2 Energy Plant Expansion

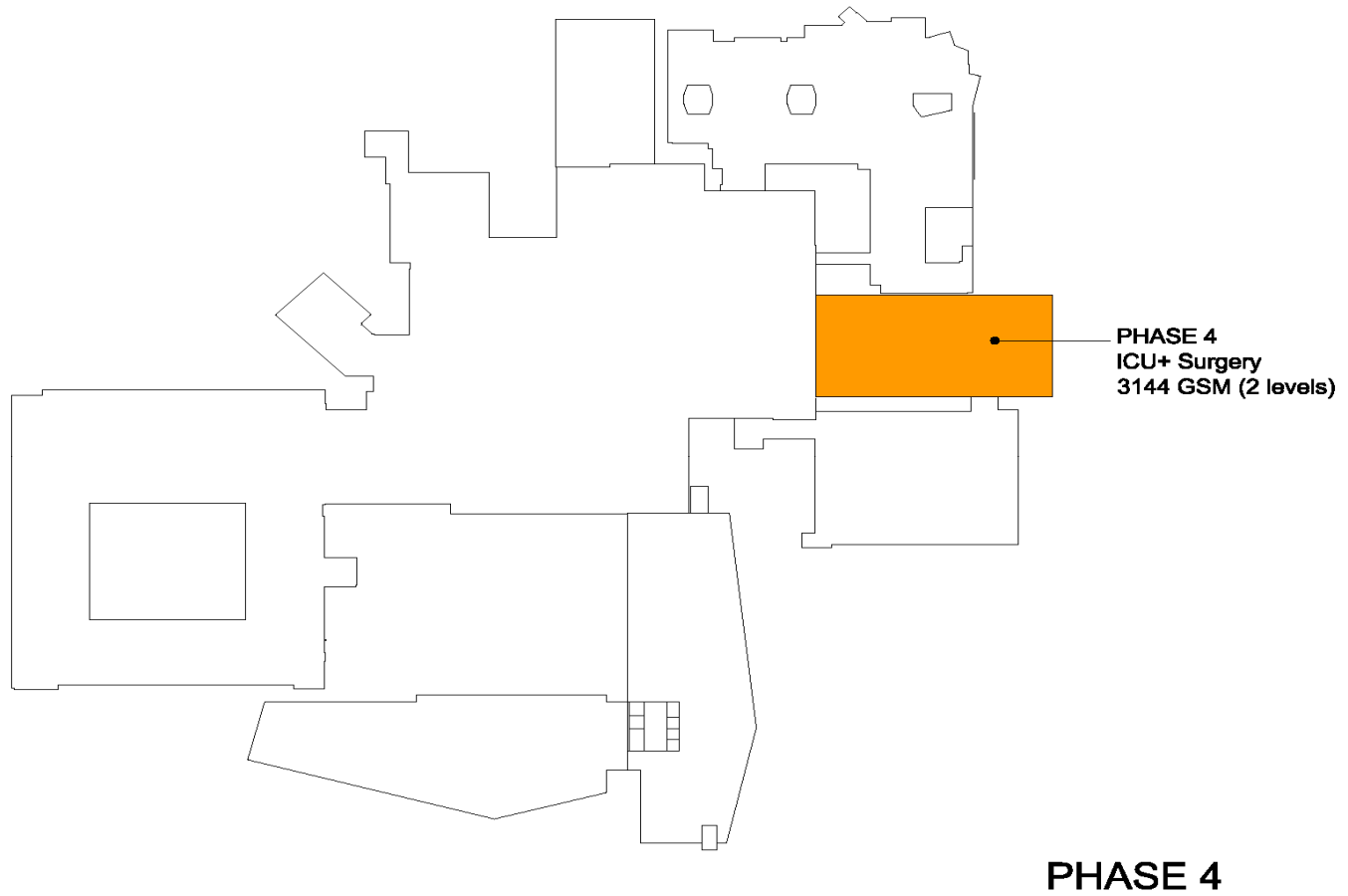


PHASE 2

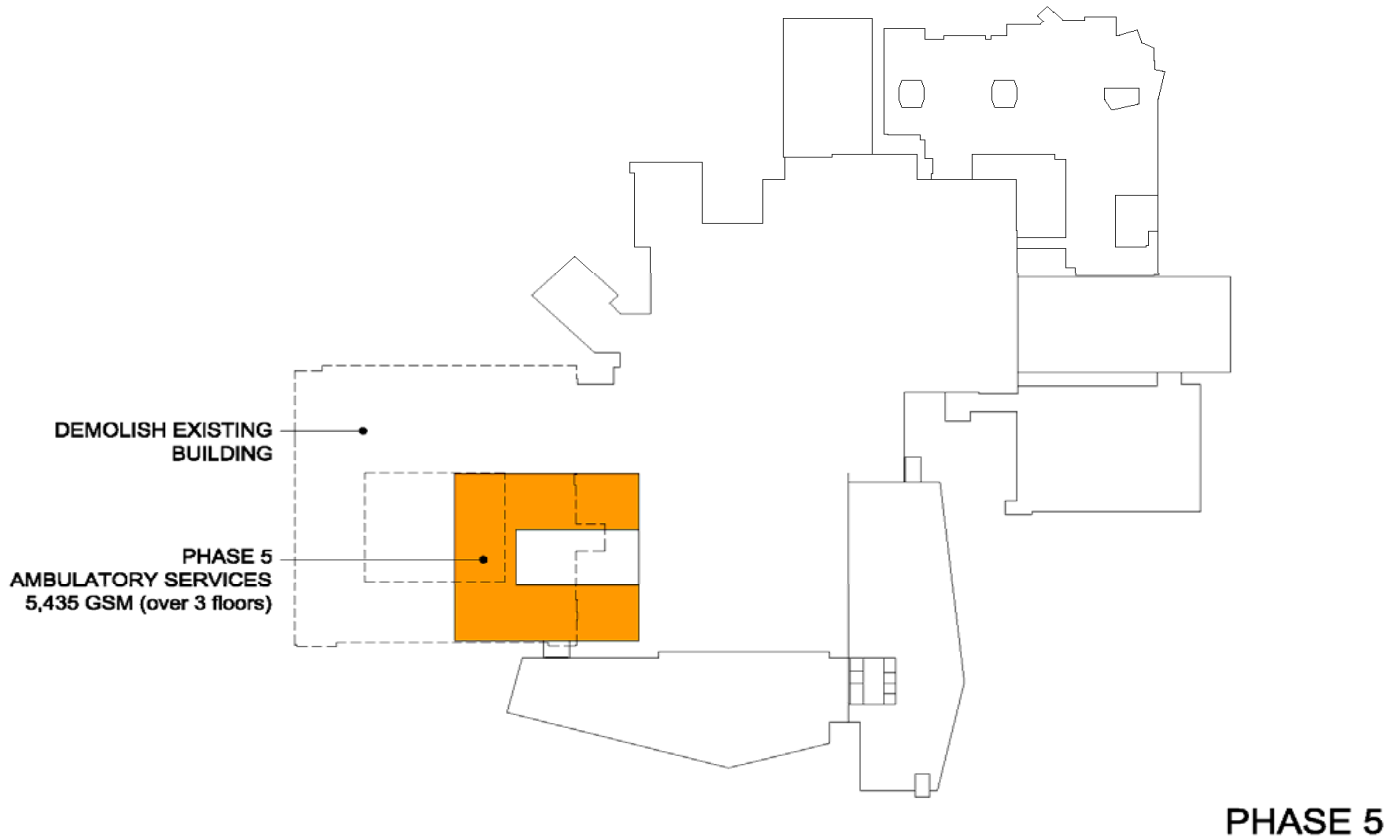
Phase 3 Inpatient Tower



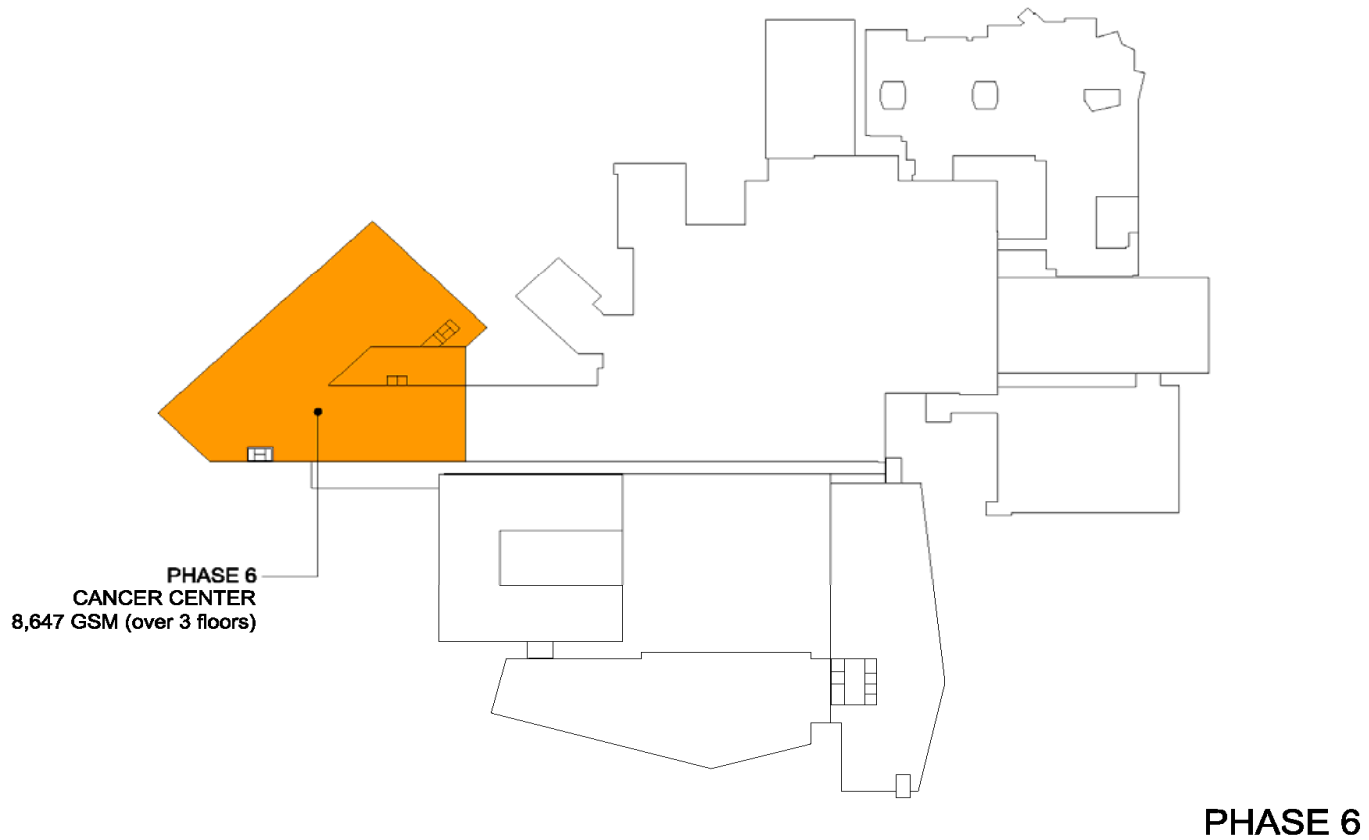
Phase 4 ICU and Surgery Expansion



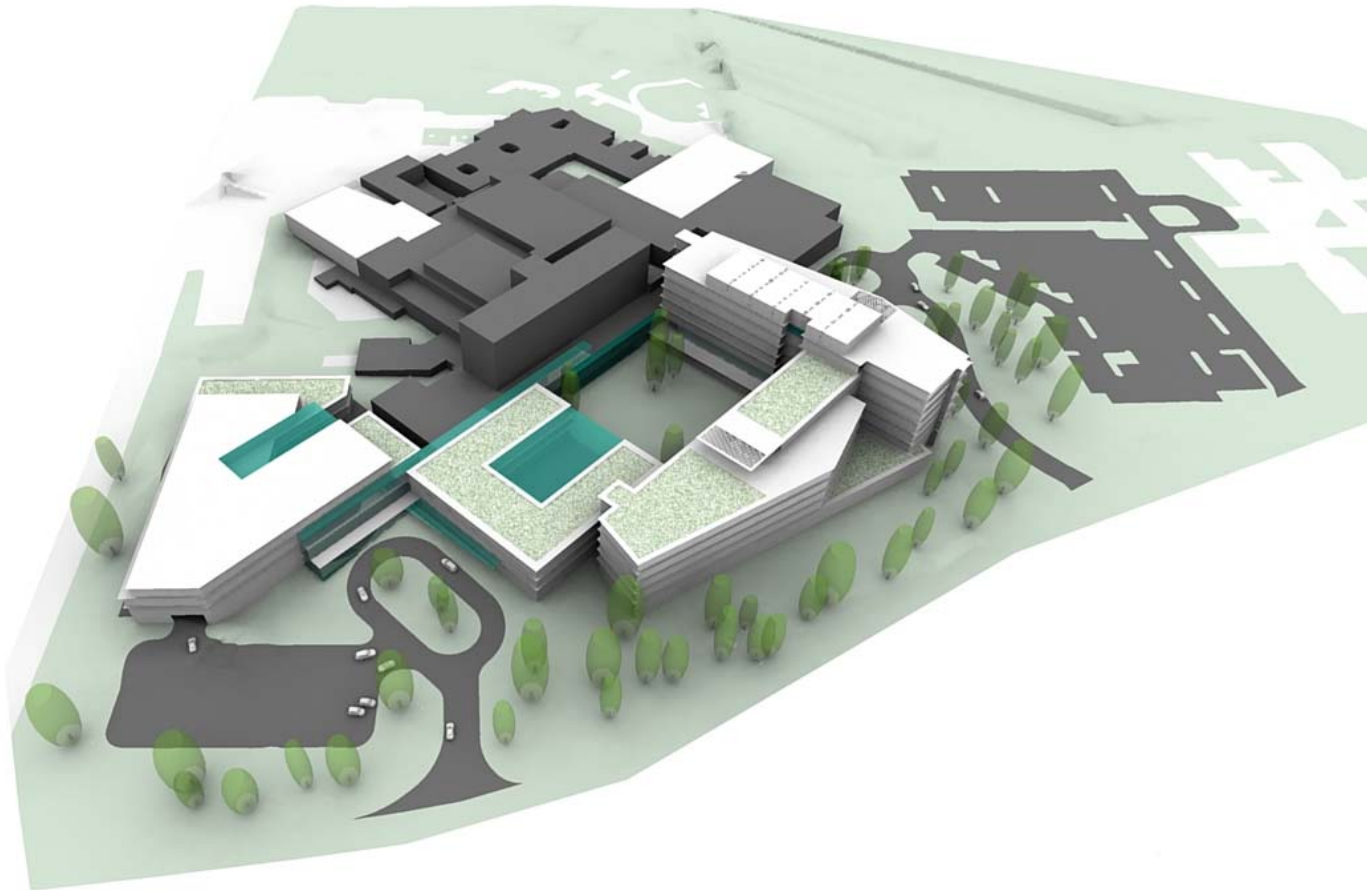
Phase 5 Ambulatory Services



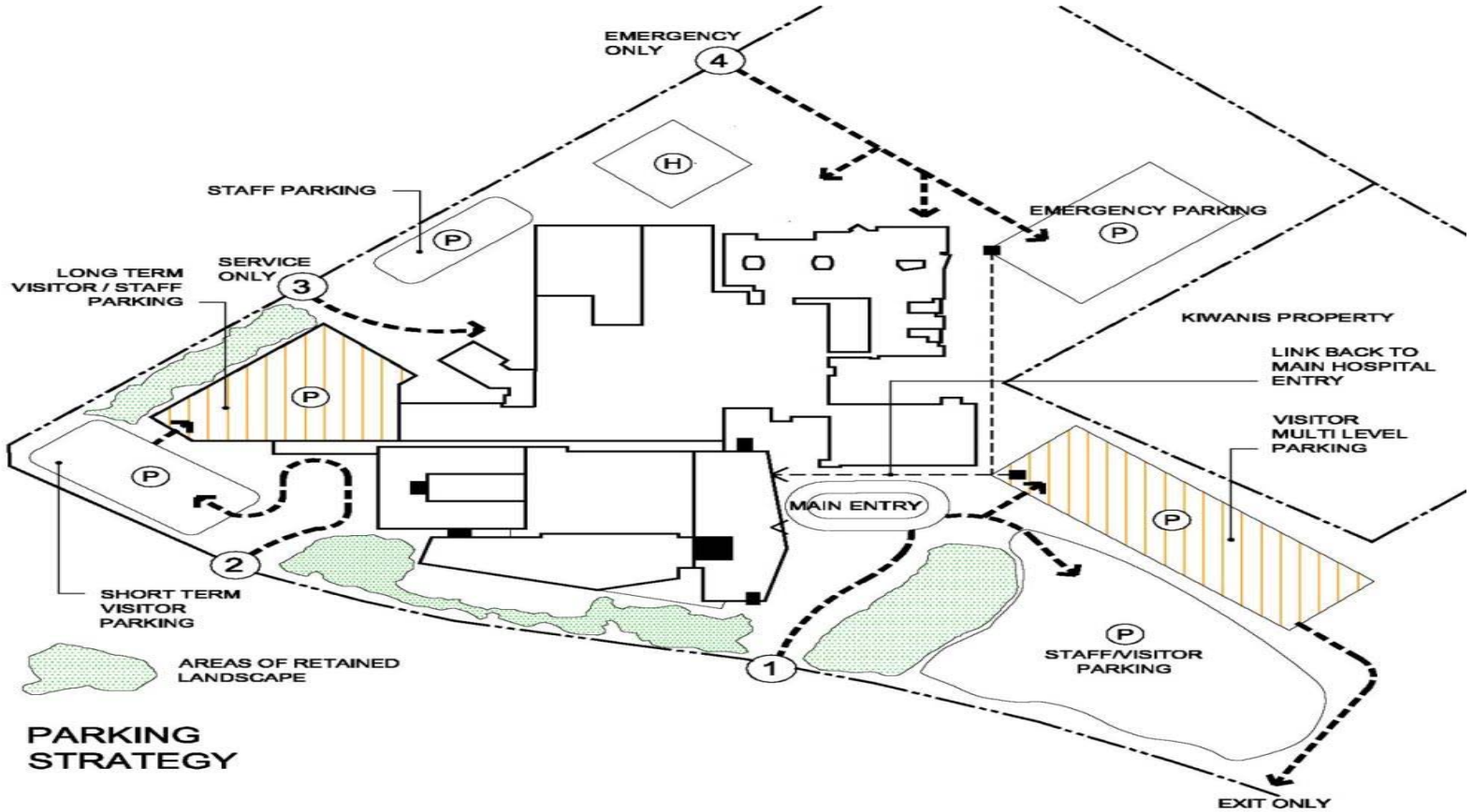
Phase 6 Cancer Centre



Massing Model



Parking Strategy



What are the next steps?

◆ Consultation

- ▶ ED/EMD Committee
- ▶ Capital Committee
- ▶ NRGH physicians and staff
- ▶ Nanaimo Regional Hospital District
- ▶ Nanaimo Foundation & Auxiliary
- ▶ Ministry of Health

Project Approvals

- ◆ VIHA major capital project priority
 - ▶ Energy Plant Expansion
 - ▶ Inpatient Tower
 - ▶ ICU and Surgery Expansion

Project Approvals

- ◆ Provincial prioritization process
- ◆ Timing to be determined