



# Open Board Forum

September 2018

Leah Hollins, Board Chair



*Excellent health and care for everyone, everywhere, every time.*



# Open Forum of the board

- Welcome
- Introducing the Board of Directors
- Presentations
  - Dr. Shannon Waters, Medical Health Officer
  - Kathy MacNeil, CEO & President Island Health
  - Jamie Braman, VP Communications, Planning and Partnerships, Island Health
- Public Presentations
  - Christina Fox, Cowichan Hospice
  - Jane Osborne, BC Community Response Network
- Q & A

# A Broad View of Health in the Cowichan Valley

Shannon Waters MD MHSc FRCPC  
Medical Health Officer  
Cowichan Valley

# Hul'qumi'num

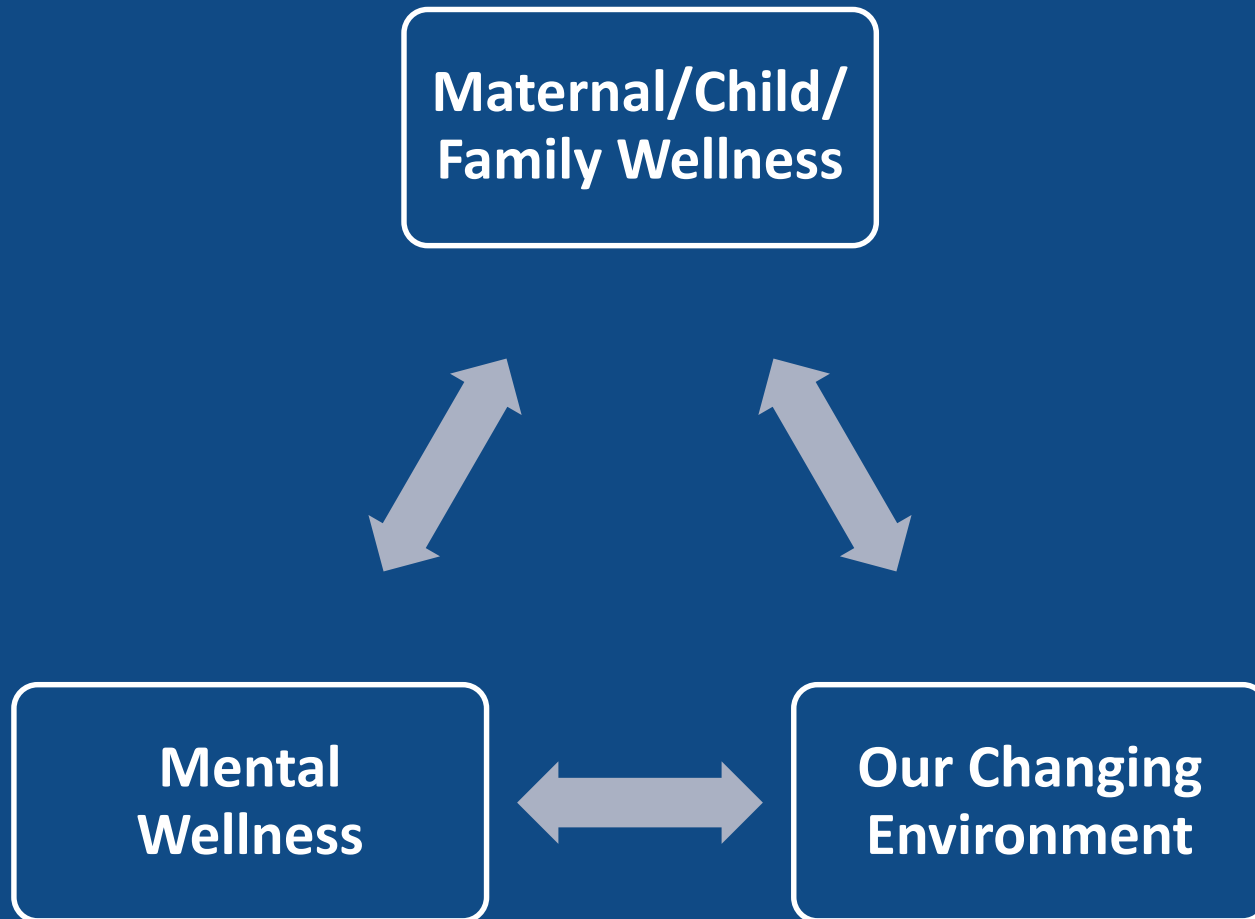
- Stz'uminus First Nation



- Cowichan Tribes

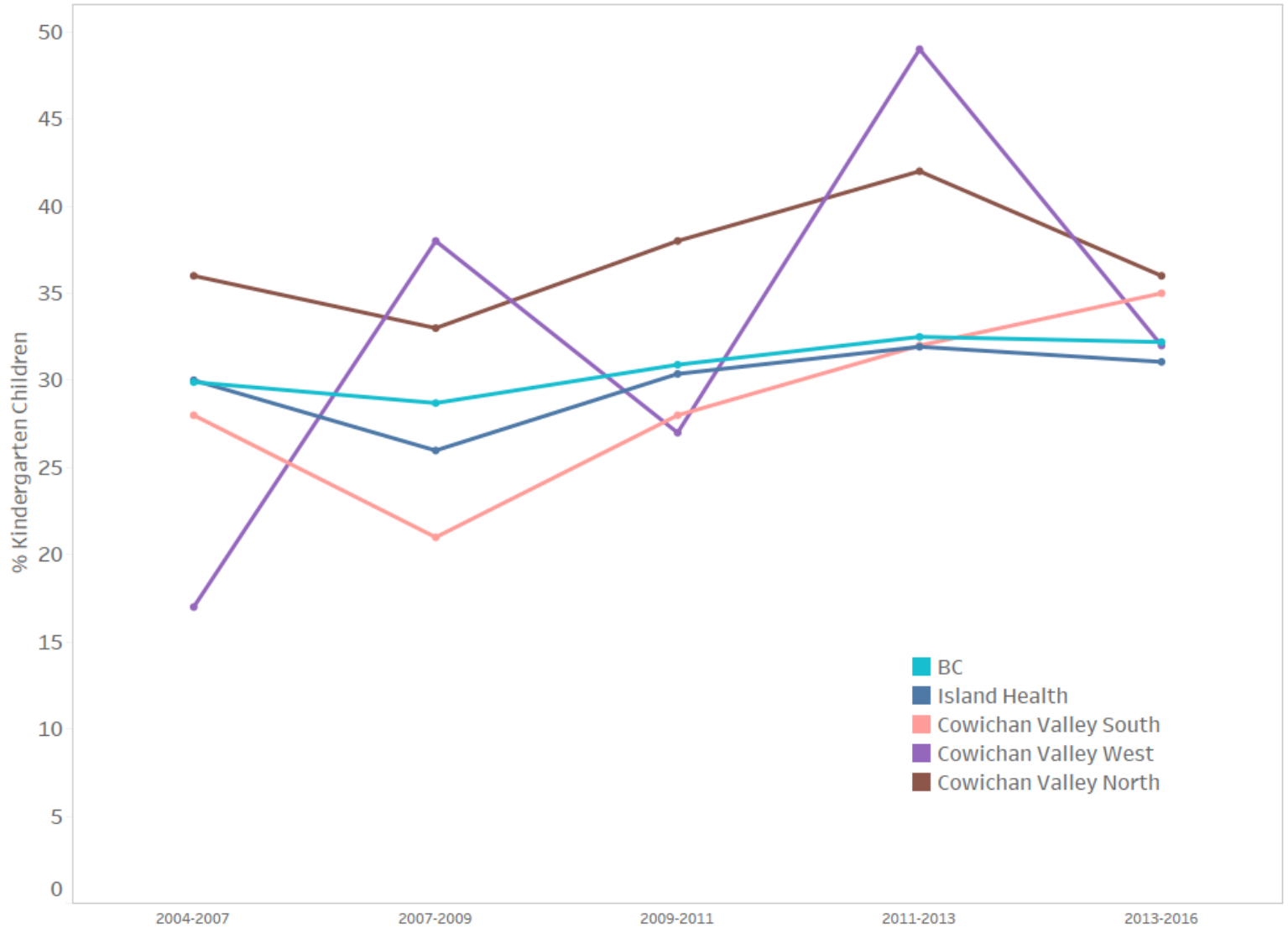


# Priorities



# Maternal/Child/Family Wellness

Early Childhood Development Instrument (EDI)  
Percent of Preschool Children Vulnerable on  
EDI: Vulnerable on  $\geq 1$  Domains



Source: Early Development Instrument, Human Early Learning Partnership, UBC, 2016



# Mental Wellness

Chronic Disease Age Standardized Prevalence in 2017 Per 1,000 Individuals

	BC	Island Health	Cowichan Valley South	Cowichan Valley North	Cowichan Valley West
Heart Failure	19.9	18.1	18.6	19.5	19.8
Alzheimer's Disease and Other Dementia	20.7	21.9	20.4	19.1	17.1
Chronic Kidney Disease	22.5	21.7	21.7	19.0	22.9
Ischemic Heart Disease	71.5	62.2	65.3	66.5	68.5
Diabetes	80.9	70.1	72.2	71.2	75.5
Chronic Obstructive Pulmonary Disease	62.0	62.4	103.0	77.3	112.4
Osteoarthritis	86.7	92.7	100.9	106.1	110.6
Asthma	122.3	129.2	132.6	154.6	138.3
Hypertension	226.4	214.0	227.0	225.9	233.2
Depression	245.5	275.4	290.7	297.8	291.7
Mood & Anxiety Disorders	300.1	338.4	358.9	348.7	365.1

Source: Ministry of Health, Chronic Disease Registries, 2016- 2017



# Our Changing Environment

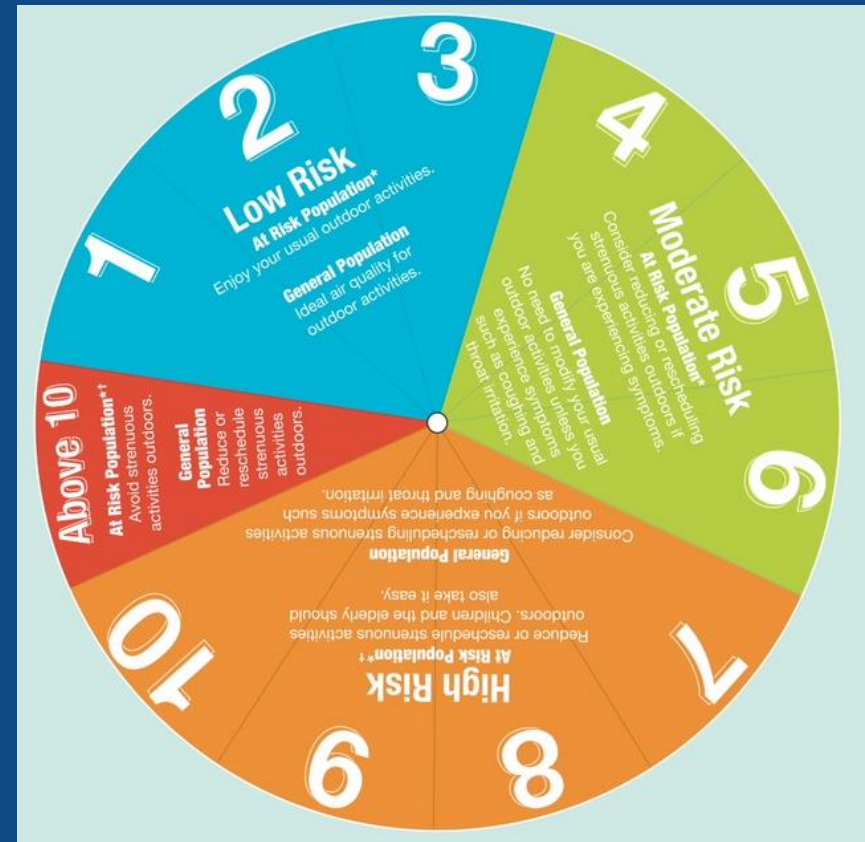
## Water



- Last 3/4 years East Vancouver Island 1<sup>st</sup> or only to reach stage 4

## Air

– Air Quality Health Index





# How can a hospital promote health in the Cowichan Valley?

- Access to health services
- Employment
- Procurement
- Education/Training
- Workplace health
- Baby-friendly hospital
- Sustainable building
- Walking & biking accessibility
- Creating community
- Facing colonialism

# Relationships & Reconciliation



Lyackson First Nation



Urban/  
Off Reserve

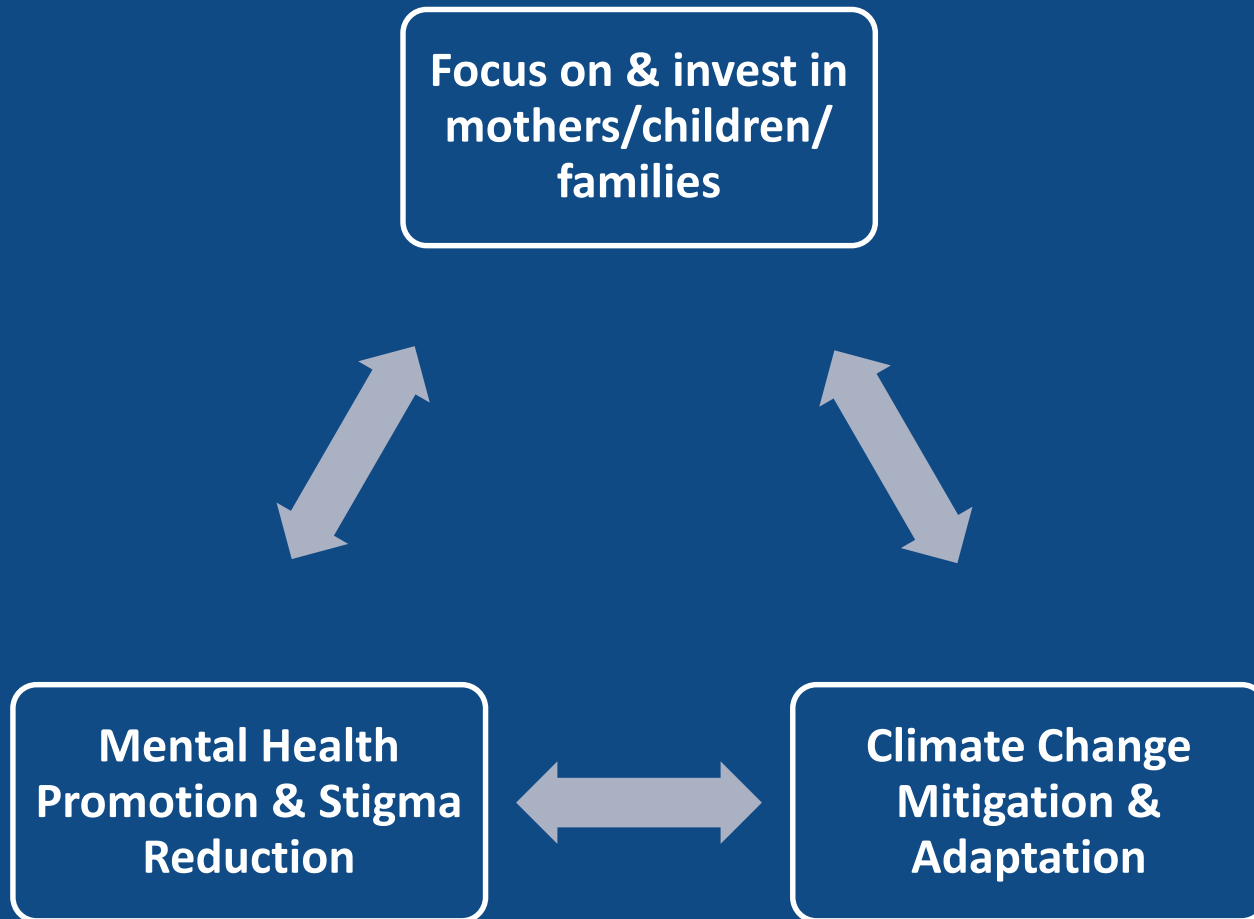


Halalt First Nation



Penelakut Tribe

# Priority areas of work



**Shannon Waters MD MHSc FRCPC**  
**250.331.8591**  
**Medical Health Officer**  
**Cowichan Valley**



# Open Board Forum

September 2018

Kathy MacNeil, President & CEO



**island health**

*Excellent health and care for everyone, everywhere, every time.*



# OVERVIEW

- **Welcome**
- **Challenges in Health Care**
- **Our Approach**
- **Our Direction for 2018 /19**
- **Discussion**

# Challenges in Health

- Population health needs
- Increased demand for services
- Health care resources
- Impact on health professionals



# Our approach... Health Care is about partnerships



Health care providers, our patients, our teams, our communities



# Indigenous Health and Care

- Culturally safe health and care
- Cowichan District Hospital - Business plan
- Rural and remote access to care



# Opioid Overdose Crisis

Using drugs has helped me numb a lot of the trauma and grief I experienced after losing my partner to suicide. I didn't wake up asking to be addicted to drugs. I used to make good choices. I want health-care providers to know you do make a difference. Those nurses and doctors who didn't give up on me and treated me with dignity and respect – that's the whole reason I am here today. I love books, so I view us all as books, we all have a story. When I'm presenting at the ER, it's the worst chapter of my life. Don't judge my story by the chapter you walk in on, try to see the whole book.

— Tara Levis, daughter

As a parent or family member it's a challenge. You're actually grieving your child while they're still alive. It takes a village to raise a child, it takes a village, a community, to save our children. We can all be part of the solution.

— Nancy Murphy, mother

## #STOPOVERDOSE

[viha.ca/mho/overdose.htm](http://viha.ca/mho/overdose.htm)



# Primary and Community Care

- Primary Care Networks
- Urgent Primary Care Centre

**B.C. government's primary health-care strategy focuses on faster, team-based care**

Thursday, May 24, 2018 11:15 AM



The B.C. government is launching a new primary health-care strategy to deliver faster and improved access to health care for British Columbians in all parts of the province, Premier John Horgan has announced.

# Access to Care Beds



# Surgery and Diagnostic Services



*A different today  
for a better  
tomorrow*



# Our Direction

- Deliver the Government and Island Health's priorities
- Excellent Health and Care - for everyone, every where, every time.

A light blue outline map of the province of British Columbia, showing its coastline and major inland waterways. The map is positioned on the left side of the slide.

**Thank you**



# Cowichan Valley

## A Plan for Health and Care

September 27, 2018

*Excellent health and care for everyone, everywhere, every time.*

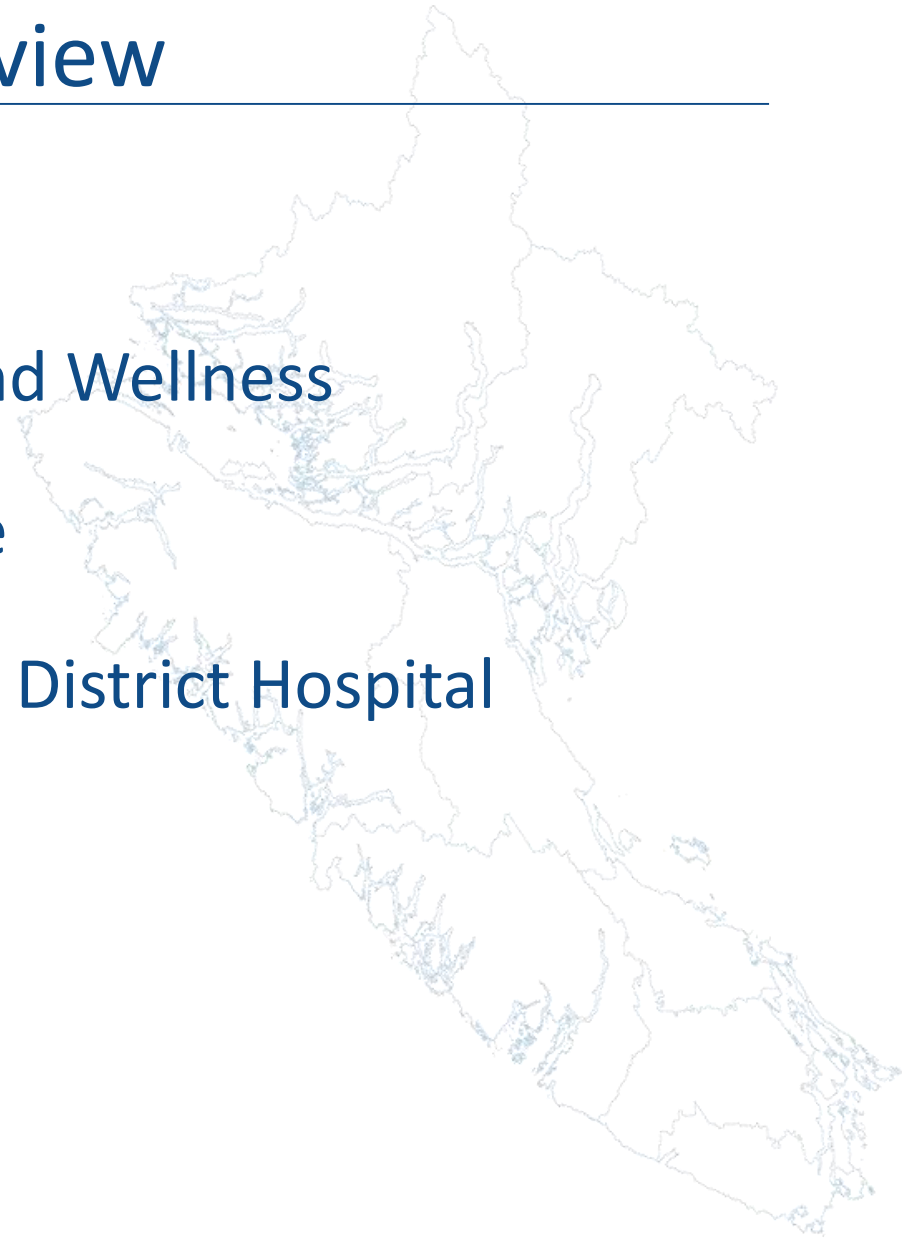




# Overview

---

- Cowichan Valley Health and Wellness
- A Plan for Health and Care
- Replacement of Cowichan District Hospital



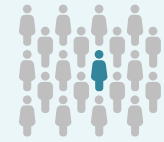
# Cowichan Valley Health and Wellness

## POPULATION



Cowichan's population is **84,887** and makes up **11%** of Island Health's total population.

*Island Health's Population: 785,525*



**9-12%** of Cowichan's population identify as **aboriginal**. This is a higher proportion of the population compared to BC (5.4%).

## LIFE EXPECTANCY AT BIRTH



	82.9-87.1	78.5-80.6
<b>COWICHAN</b>		
<b>ISLAND HEALTH</b>	84.1	80.2
<b>BC</b>	84.6	80.6

## HEALTH STATUS



**34-38%** are **staying healthy** and are non or low users of health care services.  
*Island Health: 38%*

**46-52%** are living with illness and **chronic conditions**, ranging from low to complex chronic conditions and severe mental health and cancer.  
*Island Health: 45%*

**1.8-3.3%** are towards **end of life**, and are **high users** of health care services.  
*Island Health: 2.9%*

The most prevalent conditions are:



- **Mood and Anxiety Disorders**
- **Depression**
- **Hypertension**

OF ISLAND HEALTH'S LHAs:

- **Lake Cowichan** has the highest prevalence of **Mood and Anxiety Disorders** and **COPD**.
- **Ladysmith** has the highest prevalence of **Depression**.

## PROJECTED GROWTH

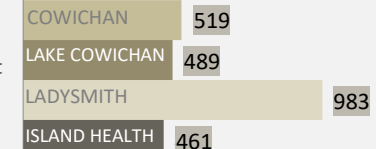


	Population Growth: 2012 – 2017	Projected Population Growth: Today to 2036
<b>Area Population</b>	<b>4 %</b>	<b>18%</b>
<b>Area Population, age 75+</b>	<b>12 %</b>	<b>120%</b>
Island Health	5 %	18 %
BC	6 %	23 %

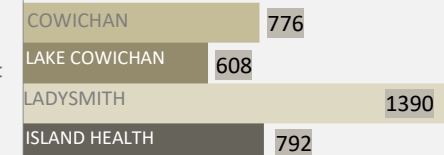
## SERVICE UTILIZATION

In 2016/2017, area residents had **more visits to Emergency Departments and Urgent Care Centres** than the Island Health average. **29% of these visits are to urgent care** (49% for 75+).

2016/17  
Emergency Department  
Visits per 1,000  
Population



2016/17  
Emergency Department  
Visits per 1,000  
Population Age 75+



## ATTACHMENT RATE

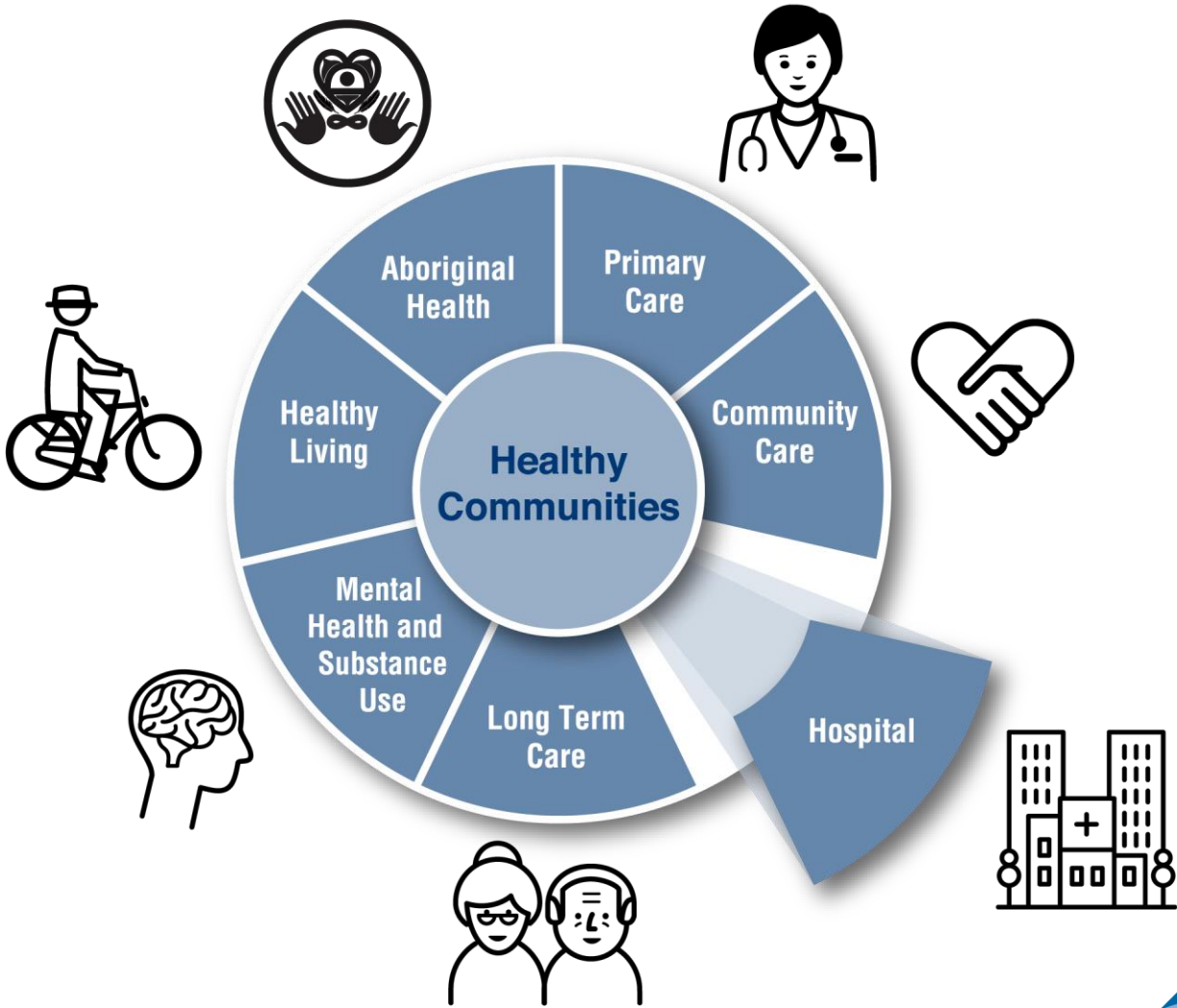


**80-83%** of Cowichan residents are attached to a **Family Physician Practice\***.

*Island Health average: 79%*

*\*These percentages are for attachment to a Family Physician practice, not a particular family physician. 2017.*

# Cowichan Valley – A Plan for Health and Care



# Cowichan District Hospital



# Replacement of CDH: Draft Vision and Principles

## Evidence Informed and Quality Driven

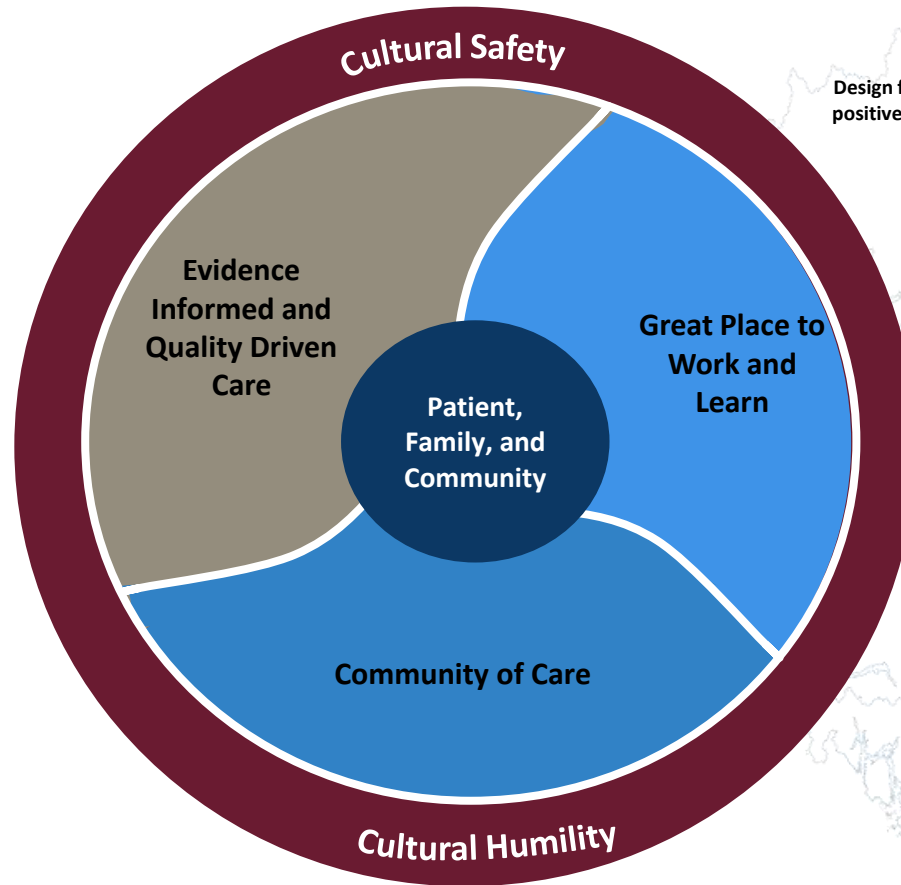
Best current evidence guides decisions and provides accountability. Access to high quality and safe care and services is equitable for all in the Cowichan Valley.

## Community of Care

Strengthen services to better support health and wellness through an integrated continuum of care that ensures the right care is provided in the right place to meet the community's changing needs.

## Great Place to Work and Learn

Create workspaces that not only foster excellence in service delivery but create an environment that supports recruitment and retention of an engaged workforce.



## Patient, Family, and Community

Design facilities and services that support a seamless and positive patient journey and enhance patient, family, and community experience.

## Cultural Safety

Recognize and respect differences, while striving to address inherent power imbalances.

## Cultural Humility

Self-reflect to understand personal and systemic biases and develop relationships.

## Facility Design Principles

### Collaboration

Ensure the hospital design supports and strengthens the community partnerships that already exist in the Cowichan Valley

### Flexible Design

Design the facility to be flexible and have surge capacity to meet the (sometimes unpredictable) future needs of the population and to be able to adapt to new technological solutions as they evolve.

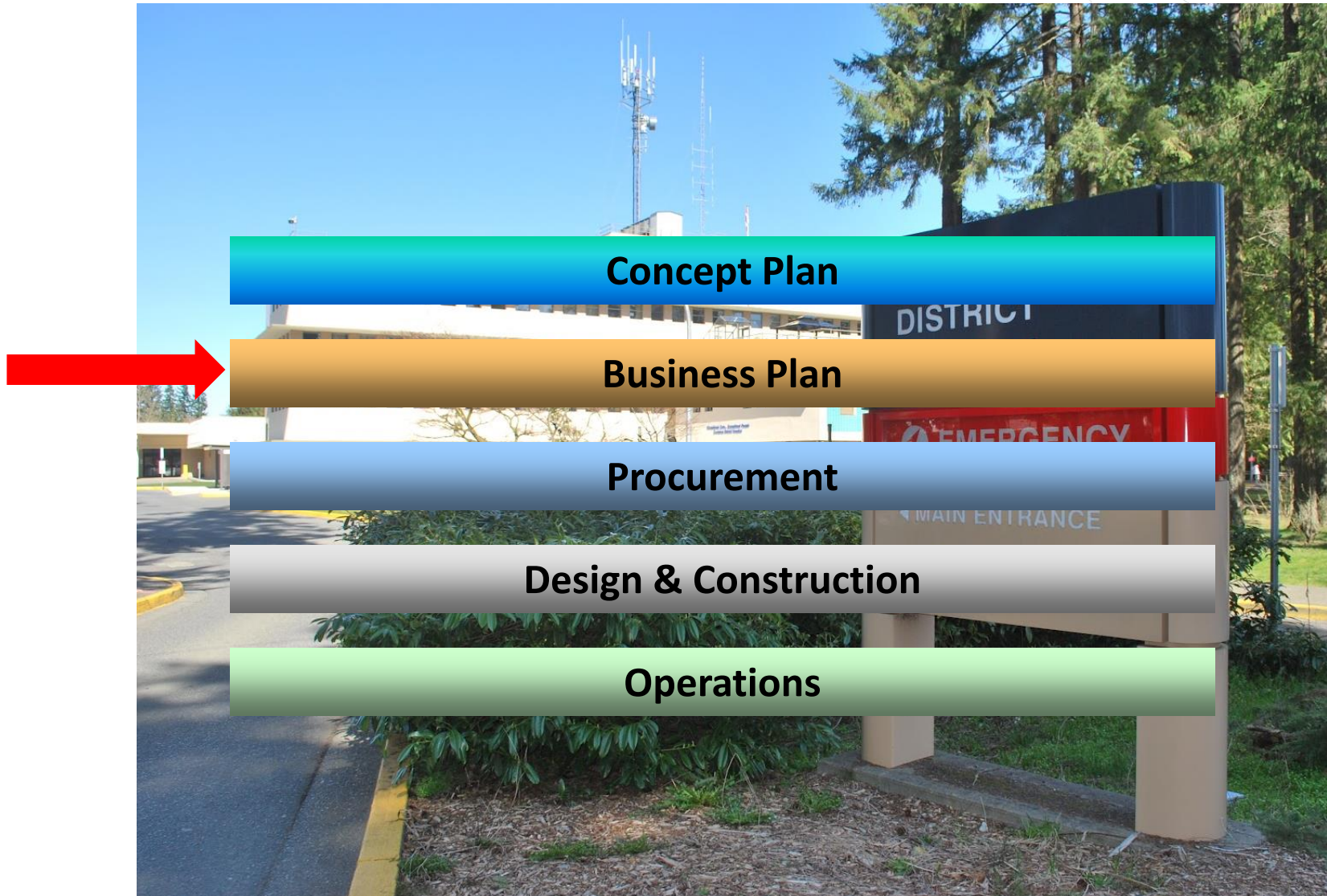
### Sustainability

Create efficient patient flow and design concepts that support operational cost efficiency and ensure long term sustainability of services provided at CDH.

### Innovation

Explore innovative options for care, be curious, ask questions

# Cowichan District Hospital Replacement Phases



# Business Plan Purpose

---

- Confirm/refresh the core elements of the Concept Plan (approved July, 2018)
- Greater level of analysis and detail on:
  - Clinical Requirements and Indicative Design
  - Service Delivery Model
  - Procurement options
  - Risks
  - Budget
    - Project Cost Estimate
    - Detailed Funding Analysis
    - Accounting Analysis
    - Commercial/Legal Analysis

# Key Business Plan Workstreams

## Clinical Planning

- Future state health service models
- Functional Program for the hospital
- Clinical and public engagement

## Indicative Design

- Workflow and key adjacencies
- Indicative architectural designs
- Indicative engineering planning

## Financial Modelling

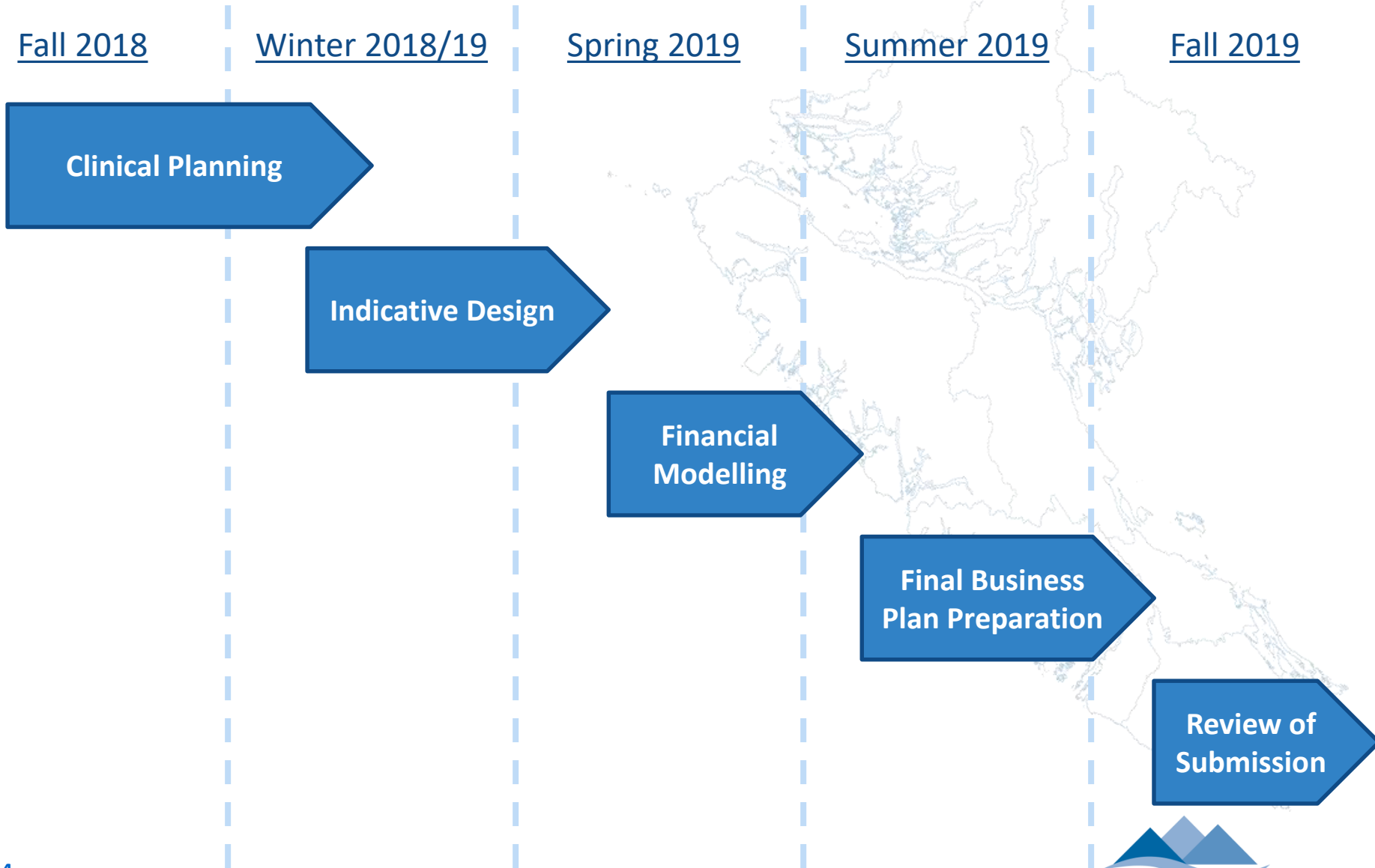
- Capital Cost estimates for design
- Operational cost estimates for future state
- Rigorous procurement analysis as required by Government



# Business Plan Engagement



# Timeline Summary



# Summary & Discussion



An outline map of the province of British Columbia, showing its coastline and major inland features. The map is rendered in a light blue color and is positioned on the left side of the slide.

# Public Presentations

# Q & A's