



Open Board Forum

November 2018

Leah Hollins, Board Chair



island health

Excellent health and care for everyone, everywhere, every time.



Open Forum of the board

- Welcome
- Introducing the Board of Directors
- Presentations
 - Kathy MacNeil, CEO & President Island Health
 - Dr. Paul Hasselback, Medical Health Officer
- Public Presentations
 - Melinda Auerbach & Shelley Garside, Lasqueti Last Resort Society
 - TBC – Nov 15
- Q & A



Open Board Forum

Kathy MacNeil

President & CEO



island health

Excellent health and care for everyone, everywhere, every time.

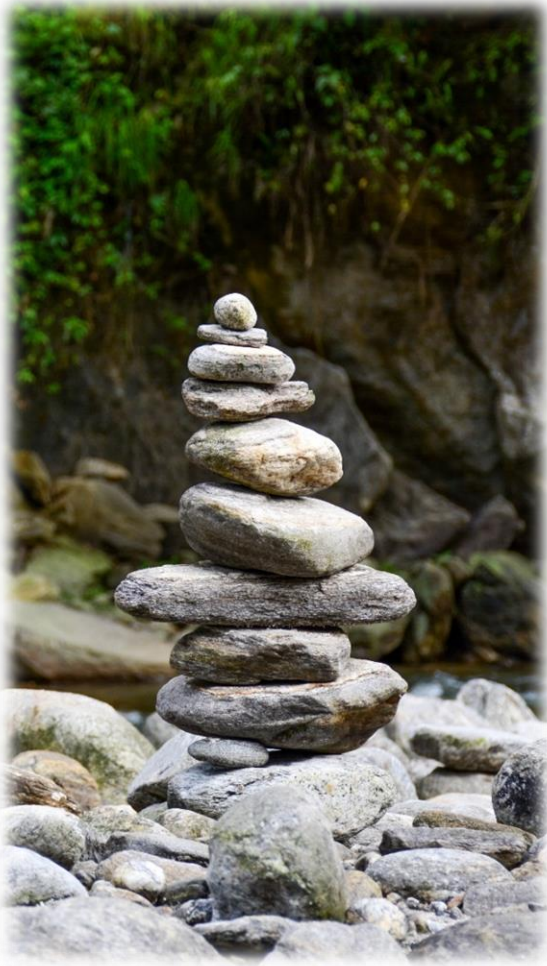




Snuneymuxw First Nation

OVERVIEW

- **Welcome**
- **Challenges in Health Care**
- **Our Approach**
- **Our Direction for 2018 /19**



Challenges in Health

- Population health needs
- Increased demand for services
- Health care resources
- Impact on health professionals



SOCIAL DETERMINANTS of health



Working together
care providers • patients • teams • communities



Guiding Principles

BETTER TOGETHER

Valuing each individual

EXCELLENT CARE

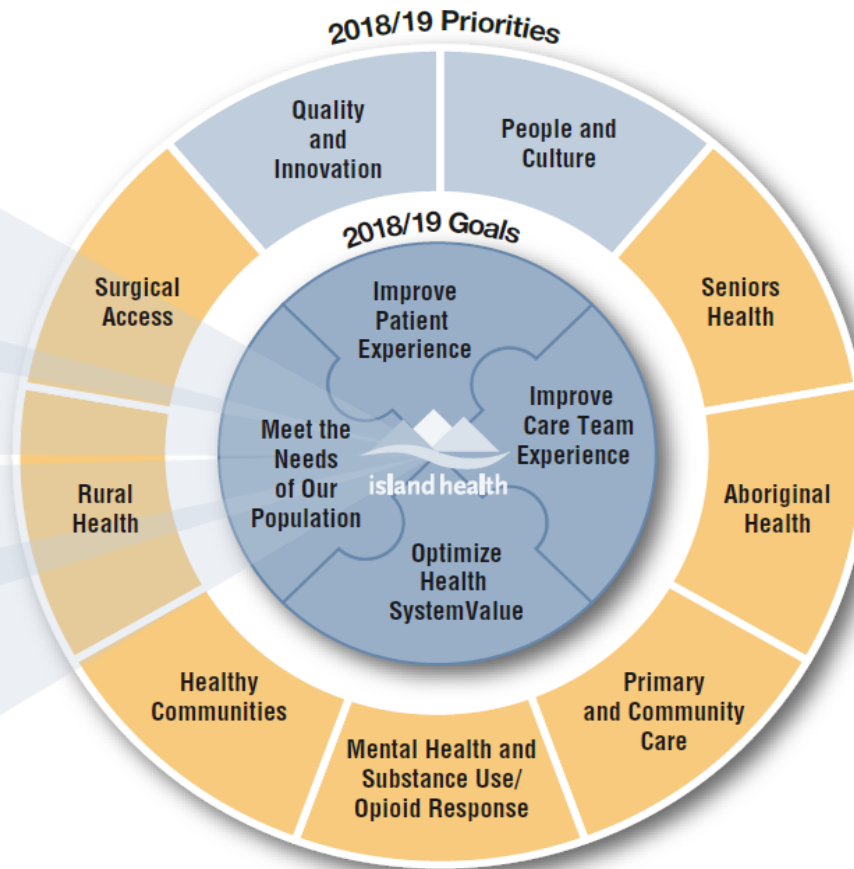
Being with you all the way

STRONG PARTNERSHIPS

Collaborating for health

COURAGEOUS INNOVATION

Creating the best value



Ministry of Health

Ministry of Mental Health and Addictions

BC Government - Strategic Plan

Aboriginal Health

Cultural Safety and Humility



ABORIGINAL PEOPLES

Primary and Community Care



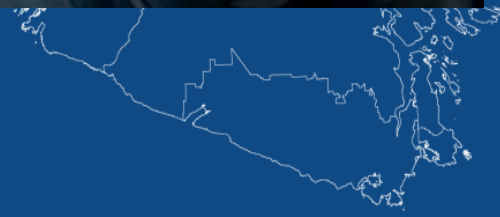
Mental Health and Substance Use / Opioid Use



Seniors Health



Surgery and Diagnostic Services



Quality & Innovation



A light blue outline map of the province of British Columbia, showing its coastline and major inland features. The map is positioned on the left side of the slide.

Thank you

Healthy Nanaimo

GREATER NANAIMO Local Health Area Profile



Greater Nanaimo Local Health Area (LHA) is one of 24 LHAs in Island Health and is located in Island Health's Central Health Service Delivery Area (HSDA). Greater Nanaimo is in the centre of the Central HSDA on the east coast of Vancouver Island. It is 1,308 square kilometres and encompasses the communities of Nanaimo, Lantzville and Gabriola Island. It borders on four other LHAs: Comox Valley, Alberni Clayoquot, Cowichan Valley North and Cowichan Valley West. Nanaimo is situated alongside Highway 1 and Highway 19. It is approximately one and a half hours drive from Victoria.

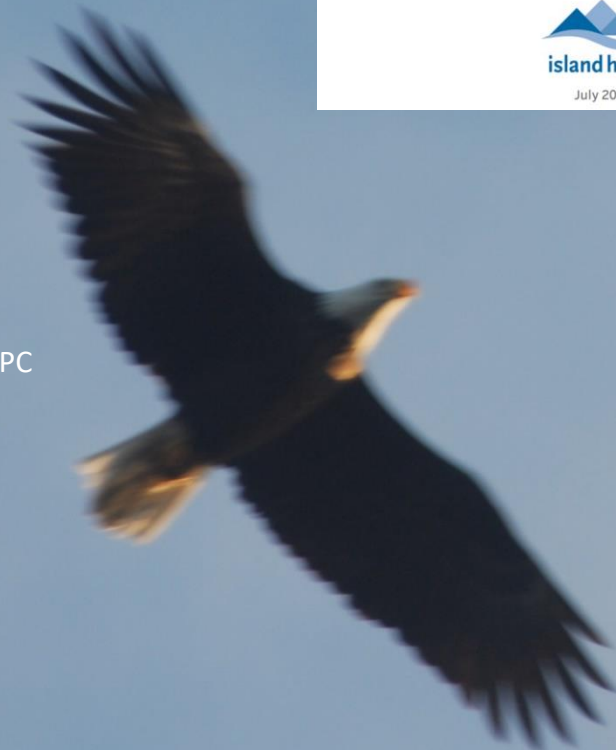


STATE OF THE CHILD
Nanaimo 2017
Greater Nanaimo Early Years Partnership

Success By 6
Helping all children succeed for life.

Children First


GREATER NANAIMO
Early Years
PARTNERSHIP
www.nanaimoearlyyears.org



Paul Hasselback MD MSc FRCPC
Medical Health Officer

Island Health Board
November 29 2018

Nanaimo's
VitalSigns[®]
Nanaimo's Annual Check-up



2015

We All Belong! NANAIMO FOUNDATION



Public Presentations

Q & A's