

AIRBORNE & CONTACT PRECAUTIONS

**Private Room
Negative Pressure**

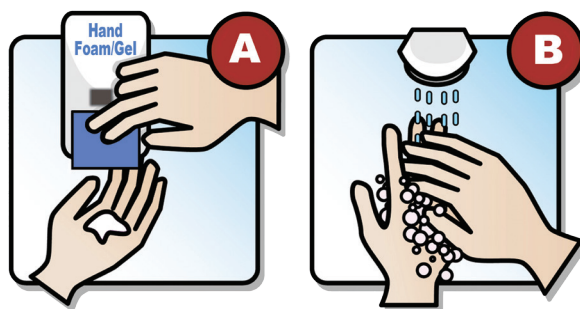
Keep door closed

**Families
and
visitors:**



**Please report
to staff before
entering**

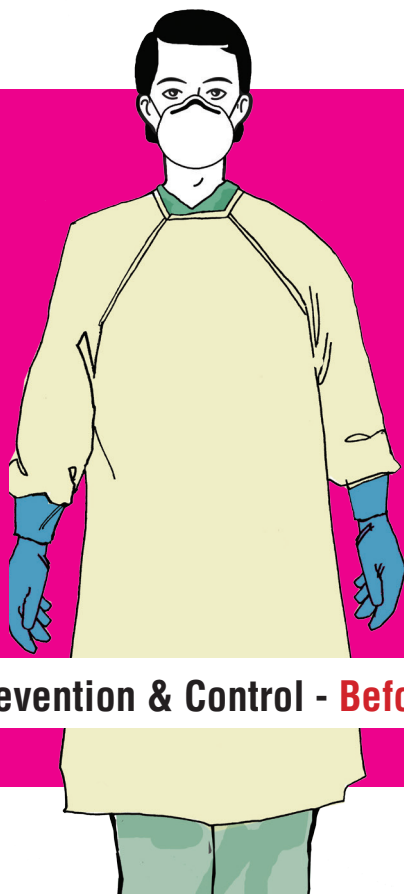
**Clean hands
before entering and
when leaving room**



Clean hands with
A) Hand foam/gel or B) soap and water

Staff:

**KEEP
SIGN POSTED
UNTIL ROOM
CLEANED**
HOUSEKEEPER will
remove sign after
cleaning



Required:

- Point of Care Risk Assessment
- Gown and gloves
- N95 respirator



Notify Infection Prevention & Control - Before Discontinuing Airborne Precautions

Point of Care Risk Assessment

Risk	Protection
<ul style="list-style-type: none"> Contact with patient or environment expected 	<ul style="list-style-type: none"> Hand hygiene
<ul style="list-style-type: none"> Splash or spray of blood or body fluids/ secretions anticipated 	<ul style="list-style-type: none"> Mask and eye protection Put on gown if soiling of clothing is likely
<ul style="list-style-type: none"> Contact with mucous membranes Non-intact skin, blood, body fluids, secretions, excretions or soiled or likely soiled item/surface anticipated 	<ul style="list-style-type: none"> Perform hand hygiene, then don gloves Perform hand hygiene after PPE removal and before leaving patient environment

Additional Precautions Guidelines

	Contact	Contact Plus	Droplet + Contact	Airborne	Airborne+ Contact
Syndromic precautions	Draining wound, diarrhea, infestation	Diarrhea (<i>C.difficile</i> positive)	Any of: <ul style="list-style-type: none"> Vomiting, with or without diarrhea New/worsening cough Fever, with or without rash Toxic shock 	Fever + weight loss + cough + high risk for TB	Disseminated rash + fever
Private room	Preferred. For suspect & confirmed CPO: yes	Preferred	Preferred. If in multi-bed room, draw curtain.	Yes	Yes
Negative pressure room	No	No	No	Yes	Yes
Staff PPE	Gown + gloves	Gown + gloves	Procedure mask + eye protection + gown + gloves	N95 respirator	N95 respirator + gown + gloves
Visitor PPE	Gown + gloves if direct care	Gown + gloves	Procedure mask + eye protection (+gown +gloves if direct care)	Offer N95 respirator to visitor	N95 respirator (+gown +gloves if direct care)
Parents of pediatric patients	Clean hands before entering and on leaving room. Do not go into common areas such as patient kitchens, playrooms, school rooms, or patient lounges.				
Patient wears a procedure mask during transport	No	No	Yes	Yes	Yes