

What is a coronary (heart) stent?

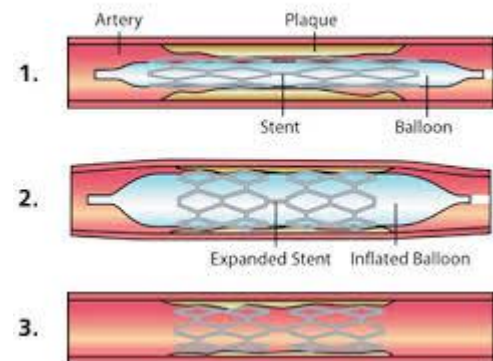
A coronary stent is a small, expandable wire tube.

It is permanently placed in the artery during a balloon angioplasty. The stent helps keep the artery open.

There are many types of coronary stents. The two most common are:

1. Bare metal stents
2. Drug coated (drug-eluting) stents

Stent with Balloon Angioplasty



Medications after a coronary stent procedure

- You will need to take antiplatelet medications. These medications help to prevent blood clots from forming in the new stent. Blood clots in a new stent can cause a heart attack or stroke.
- Different types of antiplatelet medications are often used together. Aspirin® (ASA) **and** Clopidogrel (Plavix®) or Ticagrelor (Brilinta®). There are other options if you have allergies to these medications.
- **If you have a bare metal stent** you will need to take Aspirin® with one of the other antiplatelet medications for a minimum of 30 days, or as directed by your Cardiologist.
- **If you have a drug coated stent** you will need to take Aspirin® with one of the other antiplatelet medications for a longer duration, or as directed by your Cardiologist.

- These medications will be prescribed for you. Fill your prescriptions right away and take them as directed. **Do Not Miss Any Doses!** It is very dangerous to skip, stop or change these medications on your own.
- If you are having any issues with these medications, contact your Cardiologist. Your Cardiologist is the only person who should advise you on these.
- You may be given a wallet size card and bracelet to let you know that you are on an antiplatelet medication. Please wear the bracelet and keep the card with you at all times.
- The type of stent you have and your medical condition will decide how long you will need to take the medication.

Side effects

Call your doctor if you have any of these signs of bleeding or any other side effects:

- Excessive nose bleeds
- Purple or red pinpoint spots under your skin
- Bloody or black bowel movements
- Blood in your urine
- Coughing up blood or vomit that looks like coffee grounds
- Shortness of breath that is intolerable (some medications can cause you to have mild shortness of breath, but this usually resolves over time)

For non-emergency health information

HealthLinkBC – Health advice you can trust 24/7

Tel: 8.1.1.from anywhere in BC

Tel: 7.1.1. for deaf and hearing impaired assistance (TTY)

Web: www.healthlinkbc.ca

Filling your prescription

- BC PharmaCare benefits may cover, or partly cover, your prescription costs. You must be registered with the BC PharmaCare to get these benefits. Coverage depends on your deductible which is based on your net income. Contact PharmaCare at 1.800.663.7100 (toll free) to learn more.
- Anti-platelet medications are only covered (or partly covered) for people who are eligible for PharmaCare benefits and who meet special criteria. Your Cardiologist or Pharmacist must ask for approval of coverage on your behalf.
- You will have to pay the full cost of your prescription if you do not meet the criteria or have not met your yearly PharmaCare deductible.
- **Take this handout with you to get your prescriptions filled and show it to your pharmacist.**

Dear Pharmacist:

We have sent a FAX to BC PharmaCare seeking special authority coverage on an urgent basis for patients who qualify for Clopidogrel (Plavix) or Ticagrelor (Brilinta). If the prescription was written by a cardiologist who has signed the collaborative prescribing agreement the approval should be automatic. Please call if there is a problem with the special authority approval.

Sincerely,
Reginald E. Smith, Pharm.D.
Cardiac Services, Royal Jubilee Hospital
Victoria, B.C. **Tel:** 250-508-4283



Cost of Common Medications after Coronary Stenting

PharmaCare Coverage in BC

Fair PharmaCare coverage is an income-based prescription drug coverage plan for BC residents. Families with lower incomes receive more assistance than families with higher incomes. You must register for PharmaCare coverage with the provincial government. See website (www.health.gov.bc.ca/pharmacare/) for details on registration.

How Your Level of Prescription Drug Coverage Is Calculated

PharmaCare uses the **net income** from you and your spouse's income tax returns to calculate your family's level of coverage. Net income equals the amount on Line 236 on your tax returns minus any amounts reported on Line 117 (Universal Child Care Benefit payments) and Line 125 (income from a Registered Disability Savings Plan).

If your spouse has not filed a separate tax return, PharmaCare may include the Married Amount from Line 303 of your return. They may also refer to GST Credit Application on your Income Tax Return to calculate your spouse's income.

PharmaCare Coverage for British Columbia Residents Born After 1939

Net Annual Family Income	Family Deductible	PharmaCare Pays once deductible reached	Family Maximum
Less than \$15,000	None	70%	2% of your net income
\$15,000 to \$30,000	2% of your net income	70%	3% of your net income
Over \$30,000	3% of your net income	70%	4% of your net income

Enhanced coverage for British Columbia Residents Born in or Before 1939

Net Annual Family Income	Family Deductible	PharmaCare Pays once deductible reached	Family Maximum
Less than \$33,000	None	75%	2% of your net income
\$33,000 to \$50,000	2% of your net income	75%	3% of your net income
Over \$50,000	3% of your net income	75%	4% of your net income

What if My Family Income Has Dropped By 10% Or More In The Past Two Years?

The PharmaCare deductible is based on your tax return from 2 years ago. If your income has decreased by more than 10%, then you can apply for an income review. Your deductible can be reduced immediately rather than waiting another two years. To get information about income reviews call 1-800-663-7100 or go to the following web site:

<http://www.health.gov.bc.ca/pharmacare/pdf/FPC03.pdf>

Fair PharmaCare - Monthly Deductible Payment Option

Individuals and families who's net income is less than \$15,000/yr. if they are under 70 years of age, or less than \$33,000/yr. if they are over 70 years of age do not have a deductible and PharmaCare assists them with their eligible prescription costs right away.

However, some families have a deductible based on their family net income (see table). PharmaCare offers a payment option to help these individuals and families spread the cost of the deductible over a year. Once enrolled in the Monthly Deductible Payment Option, families pay their Fair PharmaCare deductible in monthly installments and receive PharmaCare assistance with eligible prescription costs right away. This opportunity is entirely optional, and registration is required.

To Register For Monthly Deduction Option **Call: 1-800-663-7100**

How Much Will My Cardiac Medications Cost?

We have compiled the following table from a web site maintained by PacificBlue Cross Extended Health Plans (www.pharmacycompass.ca). The information on this website is from prescription drug claims that they have processed. There are a number of dose ranges for the medications listed below. The most commonly prescribed dosages have been used for the estimates. The costs can greatly vary for a number of reasons including generic vs brand names, pharmacy filling the prescription and variations in pharmacy dispensing fees.

Approximate Cost of Common Cardiac Medicines at Common Doses after Coronary Stenting*

Antiplatelet Agents	Estimated Cost/Day	Cost/ 3 Months (No Rx Fee)
ASA 81 mg/day	\$0.15	\$13.83
Clopidogrel (Plavix) 75 mg/day	\$0.78 to \$1.89	\$80.20 to \$180.10
Ticagrelor (Brilinta) 90 mg twice/day	\$3.20 to \$3.64	\$288 to \$327.60
Beta-blockers (BB)		
Metoprolol 25 mg twice/day	\$0.20 to \$0.56	\$18 to \$50.40
Bisoprolol 5 mg/day	\$0.20 to \$0.46	\$18.00 to \$41.40
ACE Inhibitors (ACE)		
Ramipril (Altace) 5 mg/day	\$0.16 to \$0.83	\$14.40 to \$74.70
Perindopril (Coversyl) 4 mg/day	\$0.88 to \$1.48	\$79.20 to \$133.20
Statins		
Atorvastatin 80 mg/day	\$0.45 to \$0.85	\$40.50 to \$76.50
Rosuvastatin 40 mg/day	\$0.39 to \$1.20	\$46.00 to \$97.30
Estimated Average Cost		
ASA/Clopidogrel/Ramipril/BB/Atorvastatin	Approx \$3.01/day	Approx \$271/3 months
ASA/Ticagrelor/Ramipril/BB/Atorvastatin	Approx \$5.09/day	Approx \$458/3 months
Pharmacy Dispensing Fee	Approx \$9 to \$13 per Rx	Approx \$55 for 5 Rx's

*Cost Data from pharmacycompass.ca, Dec 2014

Edited by: Reginald E. Smith, Pharm.D.