

VANCOUVER ISLAND NORTH - 434

Local Health Area Profile



Vancouver Island North (V.I. North) Local Health Area (LHA) is one of 14 LHAs in Island Health and is located in Island Health's North Island Health Service Delivery Area (HSDA). Situated at the northern tip of the North Island HSDA, V.I. North encompasses 21,157 square kilometres and includes the communities of Port Hardy, Port Alice, Port McNeill, Alert Bay, Kingcome, and Zeballos. V.I. North borders two other LHAs: Vancouver Island West and Greater Campbell River. V.I. North is situated along Highway 19, approximately a three hour drive from Campbell River. Many of its communities are more accessible by boat or plane than by road. BC Transit runs seven bus lines in the V.I. North area, primarily between Port Hardy and Port McNeill. HandyDART services are also offered in Port Hardy and Port McNeill. There are BC Ferries services from Port Hardy to Bella Coola, Prince Rupert, and Haida Gwaii, as well as between Port McNeill, Sointula and Alert Bay.



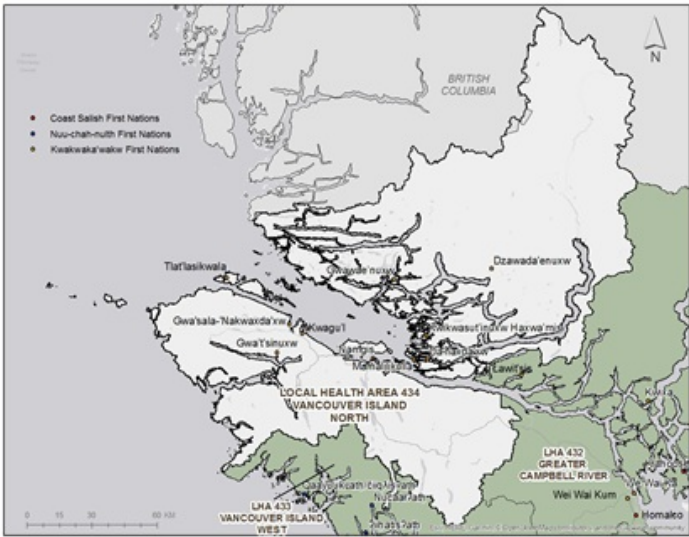
An accompanying Interpretation Guide has been created to assist with the interpretation of indicators.

The Interpretation Guide should be read with the profiles.

These profiles are not intended to be used for detailed planning or analysis. As they are updated on an annual basis, there may be more current data available. If you are intending to use these profiles for health planning purposes, if you have detailed questions, or notice a discrepancy, please contact Maritia Gully (Maritia.Gully@viha.ca).



Population and Demographics



As of 2019, the Vancouver Island North LHA represents 1.4% (11,869 people) of Island Health's total population of 843,376. According to the 2016 Census, 31.2% of people living in Vancouver Island North identified themselves as Indigenous, compared to 7.6% across Island Health and 5.9% in BC. Additionally, 4.3% of people living in Vancouver Island North identified themselves as a visible minority, compared to 9.6% across Island Health and 30.3% in BC.

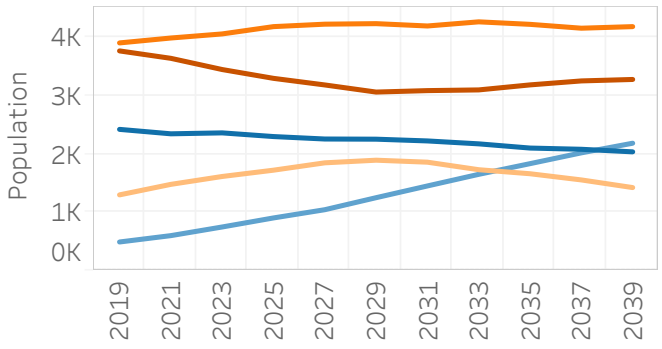
The population of Vancouver Island North is older than that of BC, but younger than Island Health overall, with an average age of 42.1 years. The 75+ age group makes up 4.13% of the population, which is lower than Island Health (10.1%) and BC (7.86%) proportions. Currently the largest population group is between ages 20 and 44.

The Vancouver Island North population is expected to increase by 6.28% to 12,614 by the year 2028; this is lower than the growth expected for Island Health (8.63%) and BC (11.4%). The greatest growth is expected in the 75+ age group, which is expected to more than quadruple (from 490 to 2,090) over the next 20 years. The 65-74 year age group is expected to increase over the short term, but similar to the 20-44 age group, will only have a small increase over 20 years. The 0-19 and 45-64 year age groups is expected to remain relatively stable, while decreasing slightly. See the Population and Demographics summary on page 11 for more information.

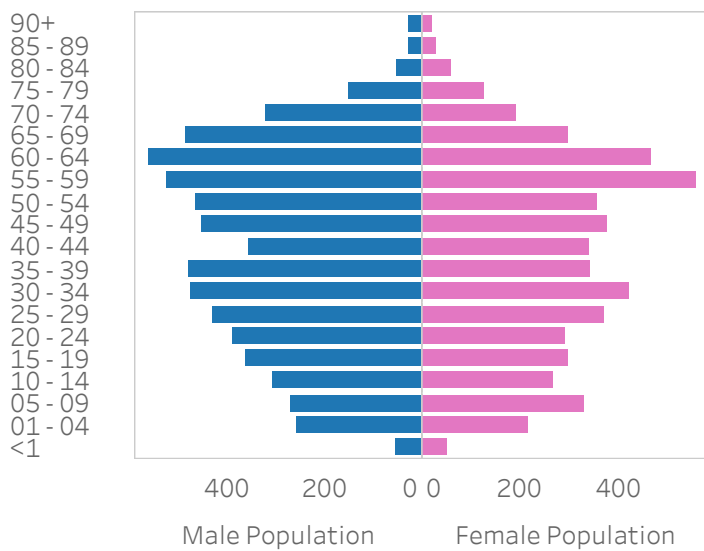
Average Age (2018)



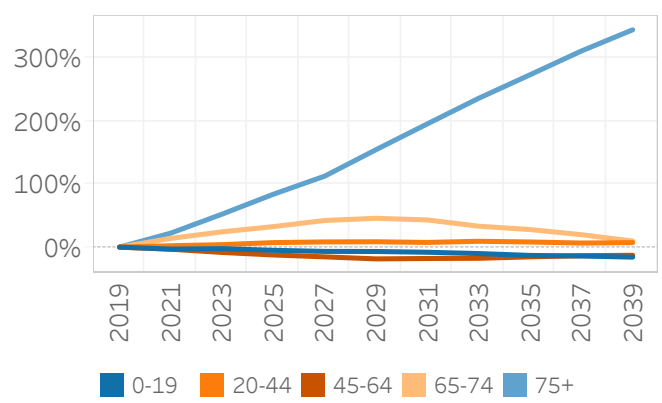
Estimated Total Population - V.I. North



Population Pyramid - 2019 - V.I. North



Estimated Population Change - V.I. North





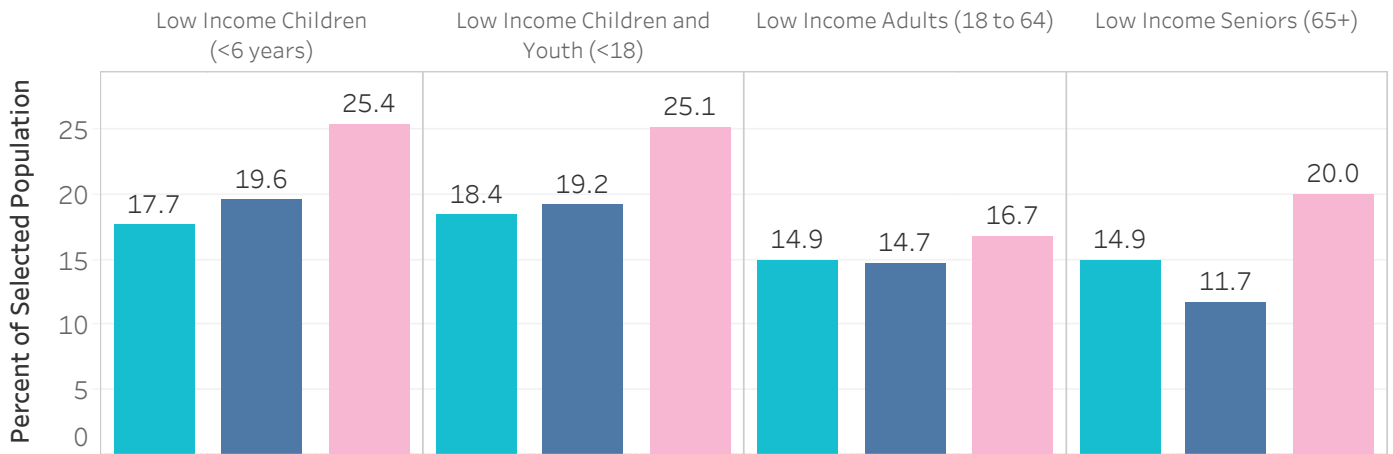
Determinants of Health

Access to adequate income, affordable housing, healthy food, education, healthy environments, and recreational opportunities influence our health and wellbeing. People who are less well-off generally have poorer health and shorter life expectancies than those who are well-off. By working upstream to improve the conditions in which all people live, work and play, we can decrease these gaps and improve the health and wellbeing of our population.

Income and Employment

The median household income for Vancouver Island North was \$57,685 in 2016, lower than the BC median household income of \$69,979 and Island Health's \$65,735 (median income in this report is a before-tax measure unless specified otherwise). The proportion of persons who are members of a low income household is higher across all age groups, compared to Island Health and BC overall. The unemployment rate in Vancouver Island North is higher in comparison to Island Health and BC (see also page 12).

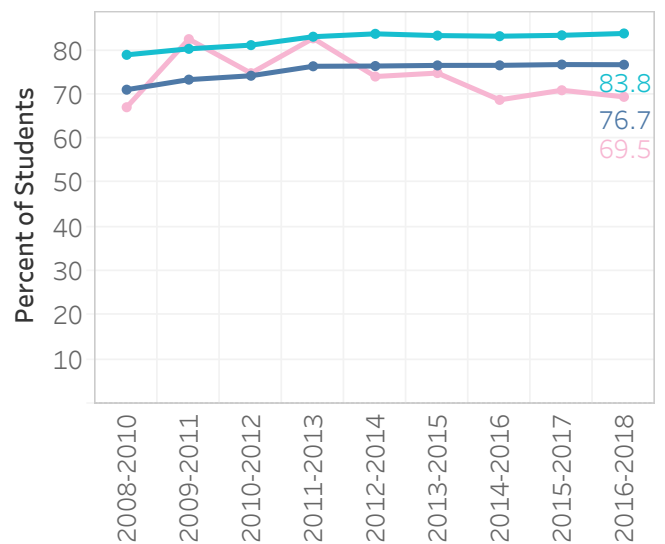
Percent of Population with Low Income in 2015 based on after-tax low-income measure (2016 Census)



Education

High school completion rates in Vancouver Island North are lower than the rates for Island Health. Also, according to the 2016 Census, a smaller proportion of the Vancouver Island North adult population have completed post-secondary education.

High School Completion Rate within 6 years of Grade 8 Enrollment (2 yr aggregate)



Population Aged 25 to 64 with Post-Secondary Certificate, Diploma or Degree (%)





Determinants of Health

Housing

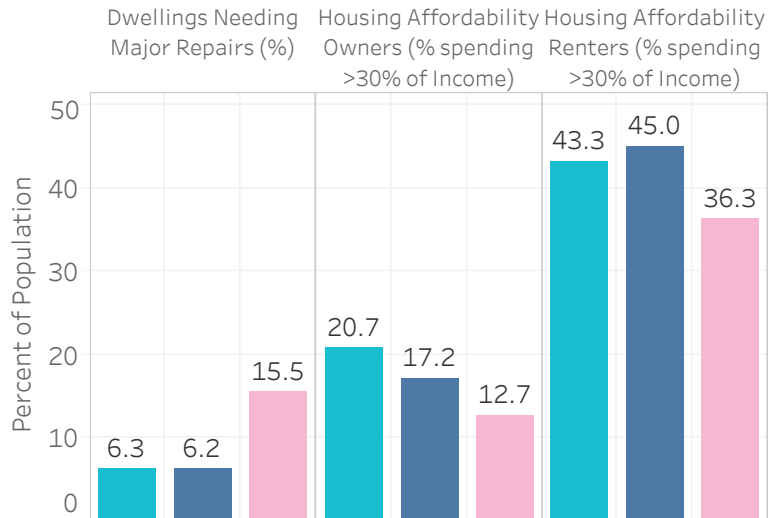
One way to measure affordability of housing is to look at how much of a household's income is spent on shelter. The percentage of population spending more than 30% of income in Vancouver Island North is lower than BC and Island Health levels, for both home owners and renters. There is a lower percentage of crowded family households in Vancouver Island North compared to BC, but higher compared to Island Health (see page 12). The percentage of households in need of major repairs (e.g. defective electrical wiring) is higher than the Island Health and BC rates.

Early Childhood Development and Determinants of Child and Youth Health

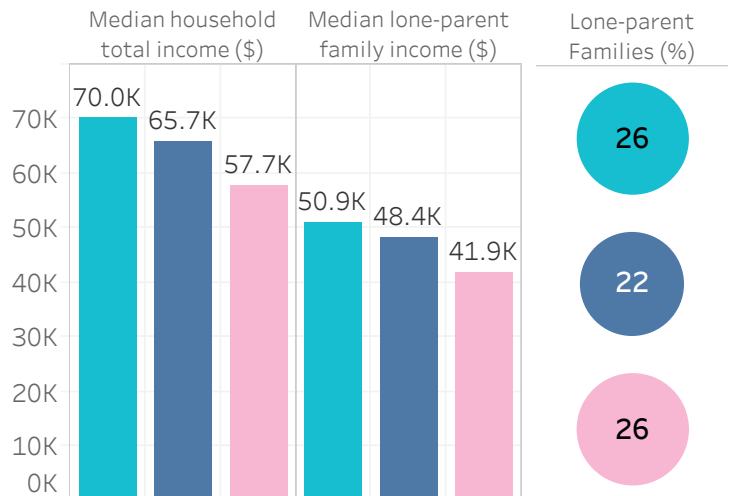
Creating supportive and healthy environments in an equitable way so that all children and youth can grow and thrive is critical to the health of the population. This includes supporting mothers during the pre- and post-natal period, supporting families during early development years, supporting children and youth to grow, learn, and transition into adulthood.

Vancouver Island North has the same percentage of lone-parent families in comparison to BC and higher than Island Health. Lone-parent families in Vancouver Island North also have a lower median household income than lone-parent families in Island Health and BC.

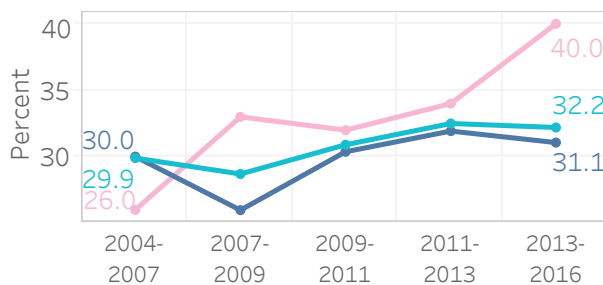
Selected Household Indicators



Median Household and Lone-Parent Income, and Percentage of Lone-Parent Families (2016 Census)



Early Development Instrument (EDI) Percent of Preschool Children Vulnerable in EDI: Vulnerable on ≥1 Domains



The Early Development Instrument (EDI) is used to measure vulnerability in "waves" of kindergarten children across five domains (social, physical, emotional, language, and communication). Increases in the EDI rate are a negative indicator of child health and decreases are a positive indicator. For Island Health overall, vulnerability had increased between 2007/2009 and 2011/2013, but decreased in the most recent wave. Vancouver Island North has had higher levels of vulnerability compared to Island Health and BC, and has shown an increase over time in the rate of vulnerability.

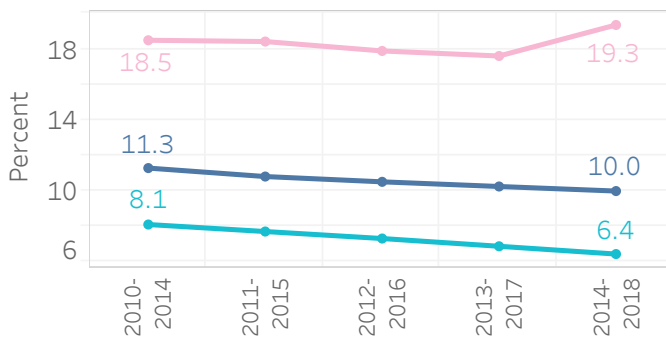


Determinants of Health

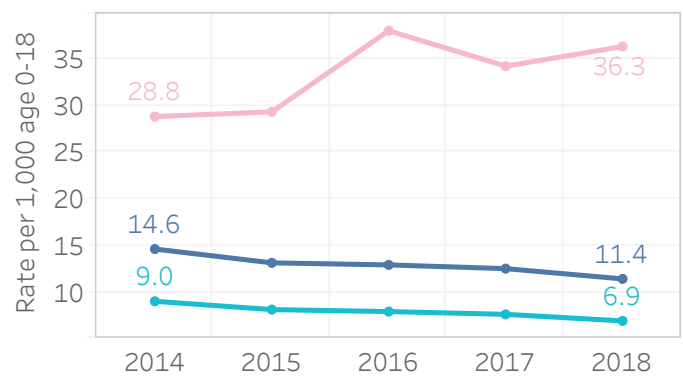
Mothers' smoking during pregnancy has demonstrated negative effects for both mother and baby. Rates of smoking during pregnancy have been decreasing over the past eight years; across Island Health overall rates have been higher than for BC. In Vancouver Island North, a much higher percentage of mothers reported smoking during pregnancy and this has increased in 2014-2018.

Rates of children and youth in care have decreased over the past five years across Island Health overall; however, rates have been much higher than BC. Vancouver Island North has a much higher rate of children and youth in care than BC and Island Health, and this rate has been increasing in recent years. See the Determinants of Health summary on page 13 for more information.

Percent of Pregnant Women who Reported Smoking at Any Time During Current Pregnancy (5 yr aggregate)

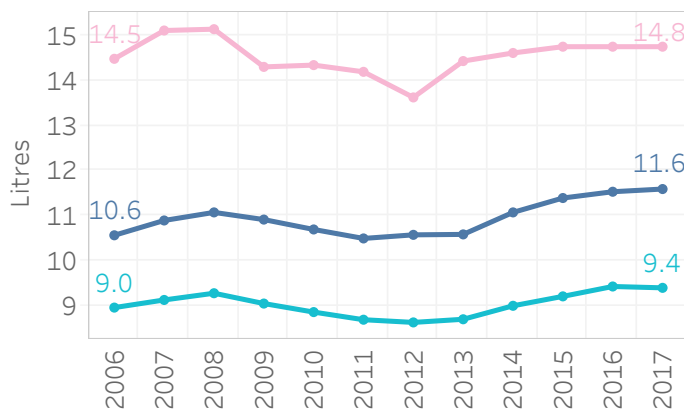


Children and Youth in Care per 1,000 Children and Youth



Healthy Behaviours and Built Environment

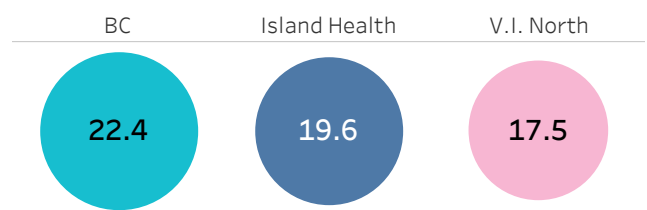
Alcohol Consumption (litres of absolute alcohol sold per person, 1L=58 standard drinks)



Preference for healthy behaviours such as healthy eating, exercise, reduction of smoking and alcohol consumption, and social connections contribute to a healthier life. Many of the healthy behaviour indicators are available through the Canadian Community Health Survey (CCHS), but the data is not available at the LHA level. Among LHA-level available data, substance use in Vancouver Island North, particularly alcohol consumption per capita, is higher than the Island Health and BC level.

Among those who are employed, a slightly lower percentage of the population in Vancouver Island North reports using active modes of transportation (walking, cycling, and public transit) to get to work compared to Island Health and BC. See the Determinants of Health summary on pages 12.

Employed Population Aged 15 and Over Walking, Biking or Busing to Work (%)





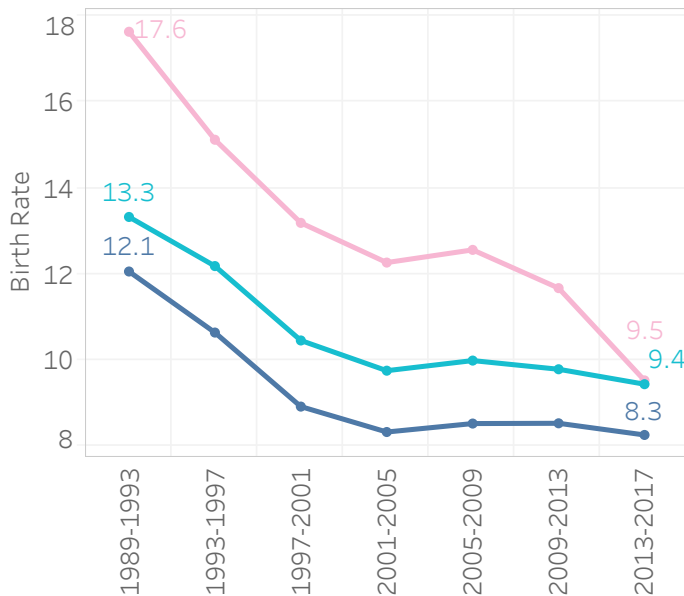
Health Status

The health status of the population is measured with several indicators such as life expectancy, infant mortality, prevalence of chronic disease, mortality, and premature mortality.

Birth Statistics

The overall birth rate for Vancouver Island North is similar to Island Health; however, there are proportionately fewer births to older mothers (35 years and over) and a greater number younger mothers (under 20 years). The rate of low birth weight babies and pre-term babies (those born at less than 37 weeks) is higher than Island Health and BC. The infant mortality rate in this LHA is nearly twice the rate of Island Health and BC.

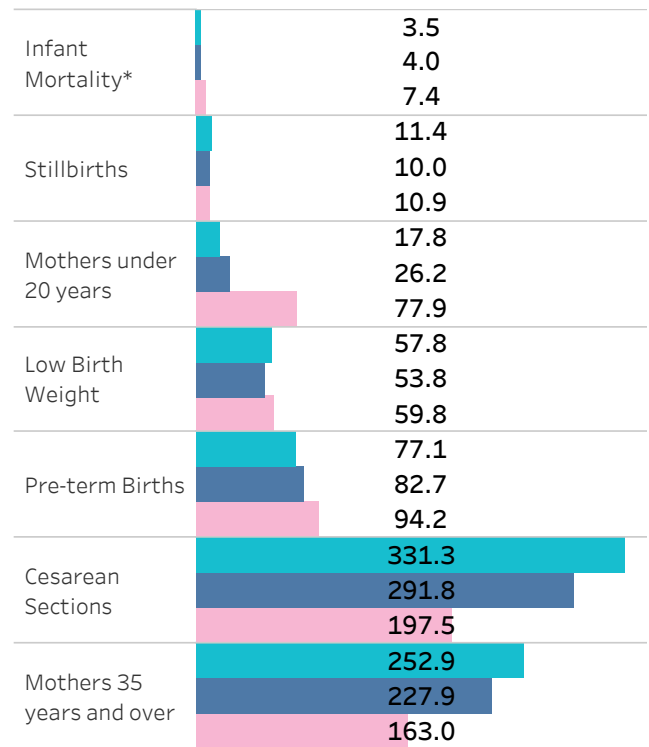
Birth Statistics
Live Births per 1,000 Population
(1989-1993 to 2013-2017)



Mortality Statistics

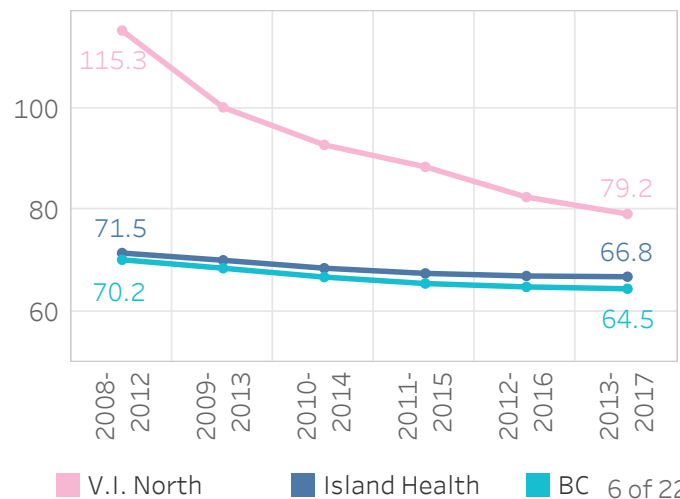
Mortality rates have decreased steadily over the last decade. The age-standardized all-cause mortality rate for Vancouver Island North was much higher than the Island Health and BC rates, but this rate has rapidly declined over the past decade. See the Health Status summary on page 15 for cause-specific mortality rates.

Birth Statistics
Per 1,000 Live Births (2013-2017)



*It is important to note that caution should be exercised when dealing with a small number of cases as an increase or decrease may indicate random variation rather than a significant change in rates.

Mortality (Age Standardized Rate per 10,000)





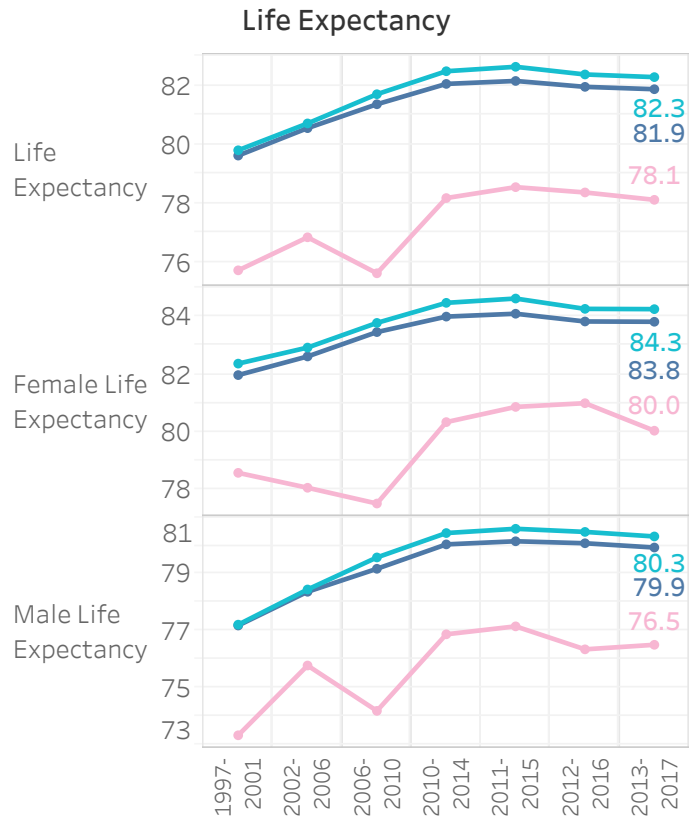
Health Status

Potential years of life lost (PYLL), is a measure of premature mortality (an estimate of the average years a person would have lived if they had not died before the established life expectancy of 75 years). The PYLL in Vancouver Island North are higher or similar to the BC and Island Health rates due to most causes. A complete list of potential years of life lost by cause can be found on page 16.

Life expectancy has been increasing over the last few decades in the Vancouver Island North population, but life expectancy tends to be shorter than both Island Health and BC.

Chronic Disease

Chronic disease prevalence rates tend to be higher for Vancouver Island North in comparison to Island Health and BC rates, with the exception of Alzheimer’s disease and other dementia, which is lower. See the Health Status summary on page 14 for more information.



Chronic Disease Age Standardized Prevalence in 2018 Per 1,000 Individuals

	BC	Island Health	V.I. North
Heart Failure	19.4	17.7	32.2
Alzheimer’s Disease and Other Dementia	20.3	21.3	19.2
Chronic Kidney Disease	23.2	22.2	24.4
Chronic Obstructive Pulmonary Disease	51.1	52.5	95.5
Episodic Asthma	49.9	52.9	65.2
Ischemic Heart Disease	69.4	60.5	80.1
Diabetes	80.3	69.5	94.0
Osteoarthritis	84.9	91.1	105.8
Asthma	123.1	130.7	167.1
Hypertension	224.7	212.1	250.0



Health Status

Mental Health and Substance Use

Over recent years, many of the LHAs across Island Health have been working to address the ongoing opioid public health emergency and to discuss how to improve mental health and wellbeing. In light of this ongoing health emergency, this page highlights several measures that are directly or indirectly related to the crisis at hand.

Mental Health Conditions

Prevalence of conditions related to mental health in Vancouver Island North vary when compared to BC and Island Health rates. The most notable conditions are schizophrenia and delusional disorders, where Vancouver Island North prevalence is lower than BC and Island Health overall. Vancouver Island North prevalence in all of the other mental health conditions sit between BC (lower) and Island Health (higher) values.

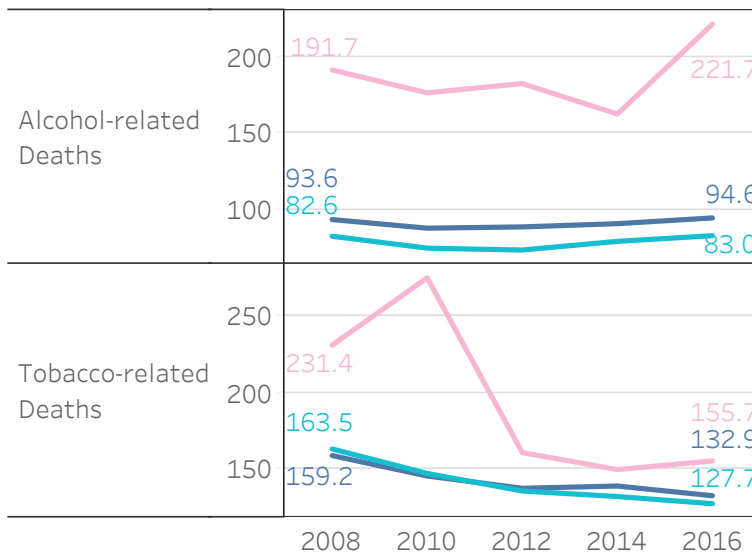
Substance Use

Vancouver Island North alcohol and tobacco-related deaths remain higher than BC and Island Health, although tobacco-related death rates have dropped over the last few years. Rates of illicit drug toxicity deaths are much lower than Island Health and BC. The indicators directly below have combined deaths that are partially or entirely attributed to the substance being measured; for more details visit <http://aodtool.cfar.uvic.ca/aod/about.php>. Also, see hospitalization rates on page 15.

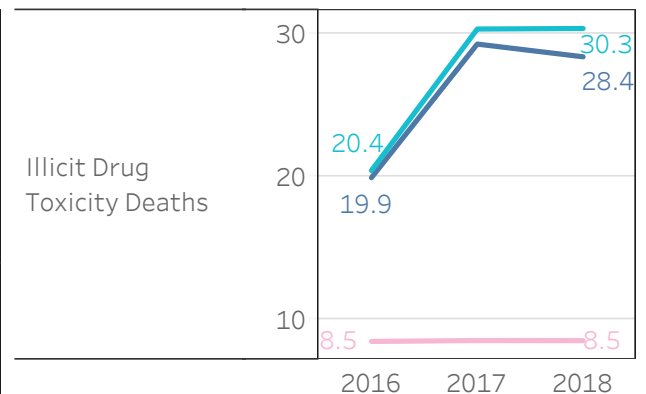
Chronic Disease Age Standardized Prevalence Per 1,000 Individuals

Depression	270	● 278.3
	260	● 273.6
	250	● 246.0
Episodic Depression	85	● 85.8
	80	● 81.1
	75	● 72.2
Mood & Anxiety Disorders	340	● 342.7
	320	● 336.1
	300	● 301.9
Episodic Mood & Anxiety Disorders	120	● 122.1
	110	● 109.5
	100	● 101.6
Schizophrenia & Delusional Disorders	11.5	● 11.6
	11.0	● 11.0
	10.5	● 10.6

Substance-Related Deaths (Age Standardized Rate per 100,000)



Illicit Drug Toxicity Deaths (Crude Rate per 100,000)



For the most up to date data on Illicit Drug Toxicity Deaths, visit: <https://www2.gov.bc.ca/gov/content/life-events/death/coroners-service/statistical-reports>

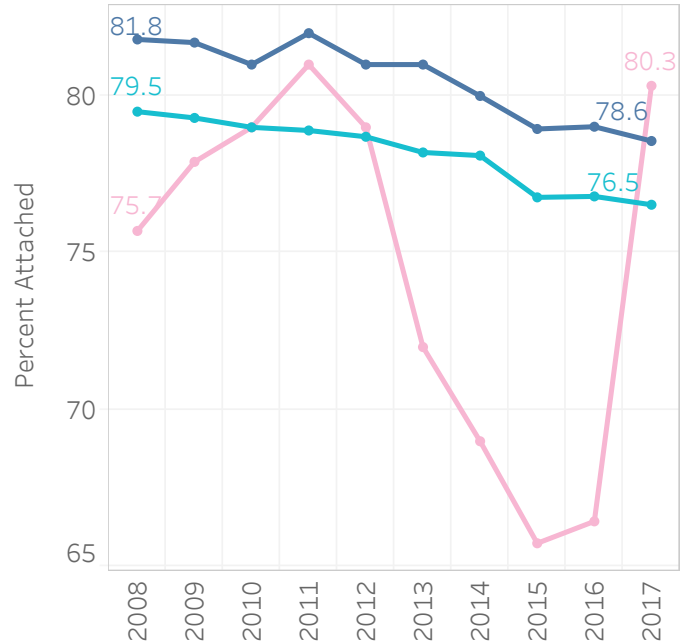


Health Service Use

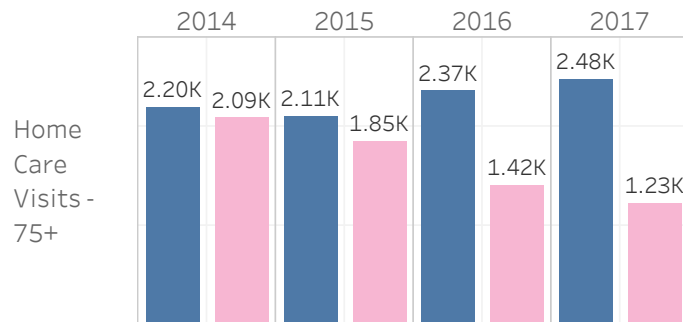
Access to primary care services plays an important role in the use of emergency department and inpatient services. The population attached to physicians at the practice level is calculated by the Ministry of Health and indicates the percentage of population who have a regular physician or regular physician practice. A slightly larger percentage of the Vancouver Island North population has a physician at the practice level, reflecting an large increase in the most recent year.

There is a slightly lower rate of home care and home support clients over 75 years of age for Vancouver Island North compared to Island Health. Vancouver Island North rates of home care visits and home support hours for this age group are lower than Island Health's rate. See the Health Service Use summary on page 17 for more information on these topics.

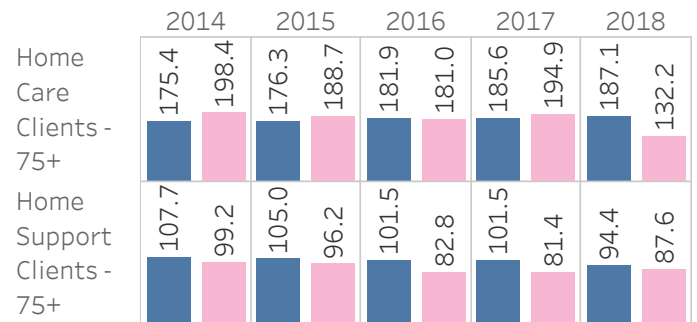
Population Attached to Physician at the Practice Level (%)



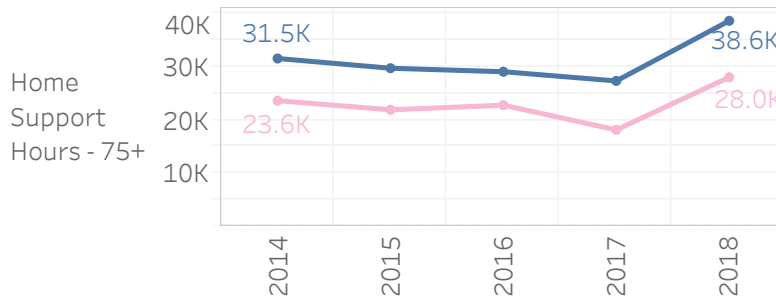
Home Care Visits Rate per 1,000 Population



Home Care and Home Support Clients Rate per 1,000 Population



Home Support Hours Rate per 1,000 Population





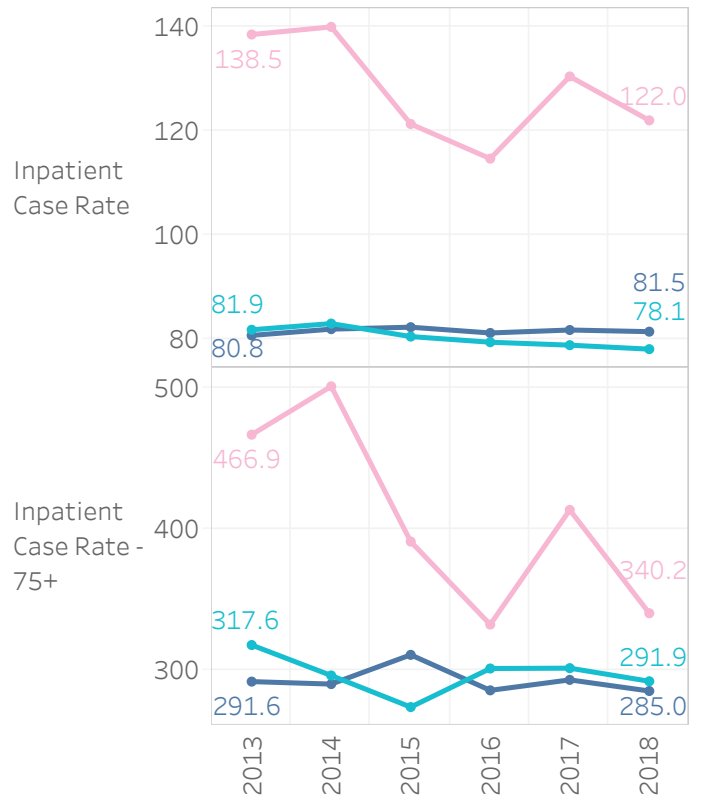
Health Service Use

The age standardized hospitalization rate (inpatient admissions) for the Vancouver Island North population is higher than the Island Health and BC rates, both overall and for the population aged 75 and over.

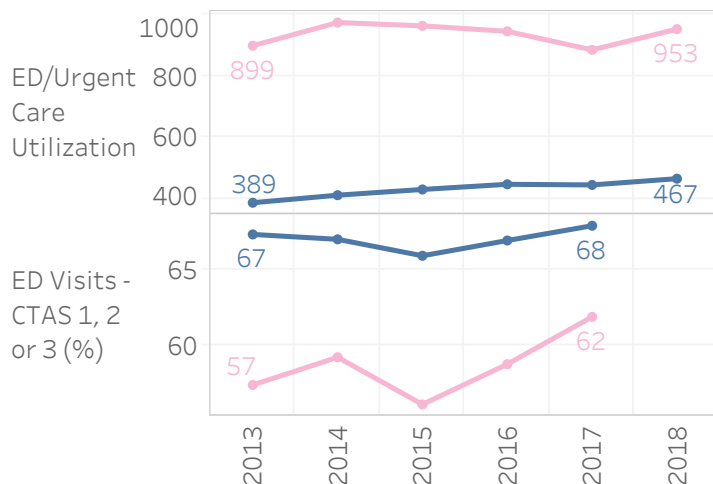
The hospital admission rate for Ambulatory Care Sensitive Conditions (ACSC) – conditions that can be treated in the community if services are available and would not necessarily require hospitalization – is slightly higher in Vancouver Island North compared to Island Health, after an increase in the most recent year.

Emergency/urgent care visit rates are higher in Vancouver Island North than Island Health, but the rate of higher urgency visits is lower. Health service usage is based on where the user resides rather than where the service is provided. See the Health Service Use summary on page 17 and 18 for more information on these topics.

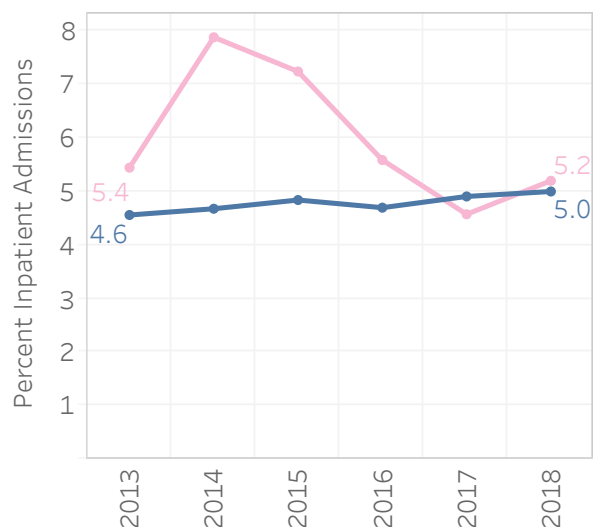
Acute Care Inpatient Cases
(Age Standardized Rate per 1,000)



Unscheduled Emergency and Urgent Care Centre Visits Rate per 1,000 Population and Percent of Higher Urgency
(Canadian Triage and Acuity Scale (CTAS) 1, 2 or 3)



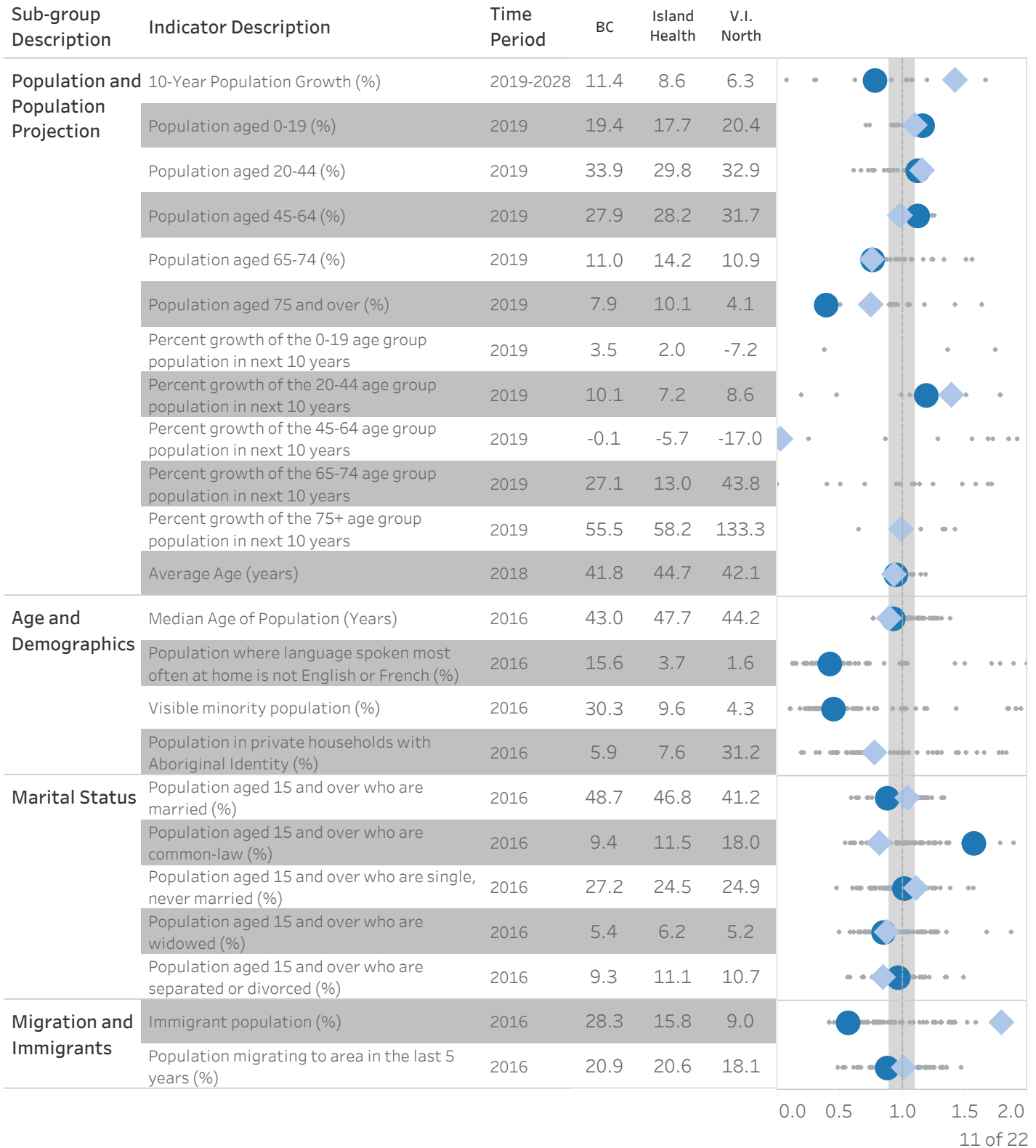
Ambulatory Care Sensitive Conditions
(% of Admissions)



● LHA
 ● LHA Better than Island Health
 ● LHA Worse than Island Health
 ◆ BC Rate, when available
 Range
 ● Other LHAs
 Island Health Value with ±10%

The chart below shows how various indicators for this LHA compare with the rest of Island Health. This LHA's result for each indicator is shown with a large circle. Green identifies results better than Island Health; red identifies results worse than Island Health. These results do not necessarily reflect statistical significance. Island Health's value is shown by the black dotted line, which is always at the centre of the chart. Light gray shading encompasses small grey circles indicates the range of the other LHA values and the dark gray shading shows ±10% from the Island Health value. This is meant to show the relative magnitude of the LHA compared to Island Health, and in some cases extends beyond the chart display.

Population and Demographics Summary



● LHA
 ● LHA Better than Island Health
 ● LHA Worse than Island Health
 ◆ BC Rate, when available
 Range
 ● Other LHAs
 Island Health Value with ±10%

The chart below shows how various indicators for this LHA compare with the rest of Island Health. This LHA's result for each indicator is shown with a large circle. Green identifies results better than Island Health; red identifies results worse than Island Health. These results do not necessarily reflect statistical significance. Island Health's value is shown by the black dotted line, which is always at the centre of the chart. Light gray shading encompasses small grey circles indicates the range of the other LHA values and the dark gray shading shows ±10% from the Island Health value. This is meant to show the relative magnitude of the LHA compared to Island Health, and in some cases extends beyond the chart display.

\$ Determinants of Health Summary

Sub-group Description	Indicator Description	Time Period	BC	Island Health	V.I. North	
Education	Population aged 25 to 64 with post-secondary certificate, diploma or degree (%)	2016	63.9	63.7	48.7	
	Grade 12 completion among students entering Grade 12 for the first time (%) (2yr Agg)	2015-2017	80.2	73.5	72.8	
	Students completing high school within six years of enrollment in Grade 8 (%) (2yr Agg)	2016-2018	83.8	76.7	69.5	
Employment	Population aged 15 and over who are unemployed (%)	2016	6.7	6.8	10.5	
Health Behaviours	Alcohol consumption (litres of absolute alcohol sold per person, 1L=58 standard drinks)	2017	9.4	11.6	14.8	
Household	Lone-parent family households (% of census families with children)	2016	25.5	22.0	25.6	
	Private households with multiple families (%)	2016	3.0	1.5	1.2	
	Private households with 5 or more persons (%)	2016	8.3	5.3	6.5	
	Dwellings rated as needing major repairs by renter or owner (%)	2016	6.3	6.2	15.5	
	Private households that are owner-occupied (%)	2016	68.0	69.1	68.4	
Morbidity	Alcohol-related hosp. (age std. rate per 100,000)	2016	397.0	440.6	795.8	
	Cannabis-related hosp. (age std rate per 100,000)	2016	27.8	31.4	56.9	
	Opioid-related hosp. (age std rate per 100,000)	2016	45.8	49.9	149.8	
	Tobacco-related hosp. (age std rate per 100,000)	2016	491.5	443.4	583.5	
Transportation	Employed Population Aged 15 and Over Walking, Biking or Busing to Work (%)	2016	22.4	19.6	17.5	

0.0 0.5 1.0 1.5 2.0

● LHA
 ● LHA Better than Island Health
 ● LHA Worse than Island Health
 ◆ BC Rate, when available
 Range
 ● Other LHAs
 Island Health Value with ±10%

The chart below shows how various indicators for this LHA compare with the rest of Island Health. This LHA's result for each indicator is shown with a large circle. Green identifies results better than Island Health; red identifies results worse than Island Health. These results do not necessarily reflect statistical significance. Island Health's value is shown by the black dotted line, which is always at the centre of the chart. Light gray shading encompassing small grey circles indicates the range of the other LHA values and the dark gray shading shows ±10% from the Island Health value. This is meant to show the relative magnitude of the LHA compared to Island Health, and in some cases extends beyond the chart display.

\$ Determinants of Health Summary (Continued)

Sub-group Description	Indicator Description	Time Period	BC	Island Health	V.I. North
Child Health	Child Mental Diseases & Disorders Hosp. (rate per 1,000 aged 0-14)	2018	1.9	2.2	0.0
	Youth Mental Diseases & Disorders Hosp. (rate per 1,000 aged 15-24)	2018	12.0	12.1	3.8
	Child/Youth Mental Diseases & Disorders Hosp. (rate per 1,000 aged 0 to 24)	2018	6.4	6.6	1.7
	Child hospitalizations - Injury/Poisoning (rate per 1,000 aged 0 to 14) - (2yr Agg)	2016-2018	4.4	5.5	4.4
	Child hospitalizations - Respiratory Dis. (rate per 1,000 aged 0 to 14) - (2yr Agg)	2016-2018	8.0	9.2	12.9
	Child hospitalizations - Dental Surgery (rate per 1,000 aged 0 to 14) - (2yr Agg)	2016-2018	7.0	9.8	17.8
	Pregnant women who reported smoking at any time during current pregnancy (%) (5yr Agg)	2014-2018	6.4	10.0	19.3
Early Development	EDI: Kindergarten children rated as vulnerable for physical development (%)	2013-2016	14.8	16.2	23.0
	EDI: Kindergarten children rated as vulnerable for social development (%)	2013-2016	15.7	14.7	15.0
	EDI: Kindergarten children rated as vulnerable for emotional development (%)	2013-2016	16.1	16.6	25.0
	EDI: Kindergarten children rated as vulnerable for language development (%)	2013-2016	9.4	9.0	8.0
	EDI: Kindergarten children rated as vulnerable for communication development (%)	2013-2016	14.2	11.9	7.0
	EDI: Kindergarten children rated as vulnerable on one or more domains (%)	2013-2016	32.2	31.1	40.0
	EDI: Kindergarten children rated as vulnerable on one or more domains, excl. communication (%)	2013-2016	28.6	28.5	39.0
Income	Median lone-parent family income (\$)	2016	50,894.0	48,366.0	41,886.0
	Median household total income (\$)	2016	69,979.0	65,735.0	57,685.0
Income Inequality	Difference in median income comparing males and females aged 15 and over	2016	12,817.0	12,100.0	14,421.0
	Low income based on after-tax low income measure (%)	2016	15.5	14.8	18.9
	Low income based on after-tax low-income measure, ages less than 18 years (%)	2016	18.4	19.2	25.1
	Low income based on after-tax low-income measure, ages less than 6 years (%)	2016	17.7	19.6	25.4
	Low income based on after-tax low-income measure, ages 18 to 64 years (%)	2016	14.9	14.7	16.7
	Low income based on after-tax low-income measure, ages 65 years and over (%)	2016	14.9	11.7	20.0
	Households (owned) spending more than 30% of income on housing (%)	2016	20.7	17.2	12.7
	Households (rented) spending more than 30% of income on housing (%)	2016	43.3	45.0	36.3
Protecting Child and Youth	Children and Youth in Care (rate per 1,000 children aged 0-18)	2018	6.9	11.4	36.3
	Children and Youth in Need of Protection (rate per 1,000 children aged 0-18)	2017	29.5	41.3	104.6

● LHA
 ● LHA Better than Island Health
 ● LHA Worse than Island Health
 ◆ BC Rate, when available
 Range
 ● Other LHAs
 Island Health Value with ±10%

The chart below shows how various indicators for this LHA compare with the rest of Island Health. This LHA's result for each indicator is shown with a large circle. Green identifies results better than Island Health; red identifies results worse than Island Health. These results do not necessarily reflect statistical significance. Island Health's value is shown by the black dotted line, which is always at the centre of the chart. Light gray shading encompassing small grey circles indicates the range of the other LHA values and the dark gray shading shows ±10% from the Island Health value. This is meant to show the relative magnitude of the LHA compared to Island Health, and in some cases extends beyond the chart display.

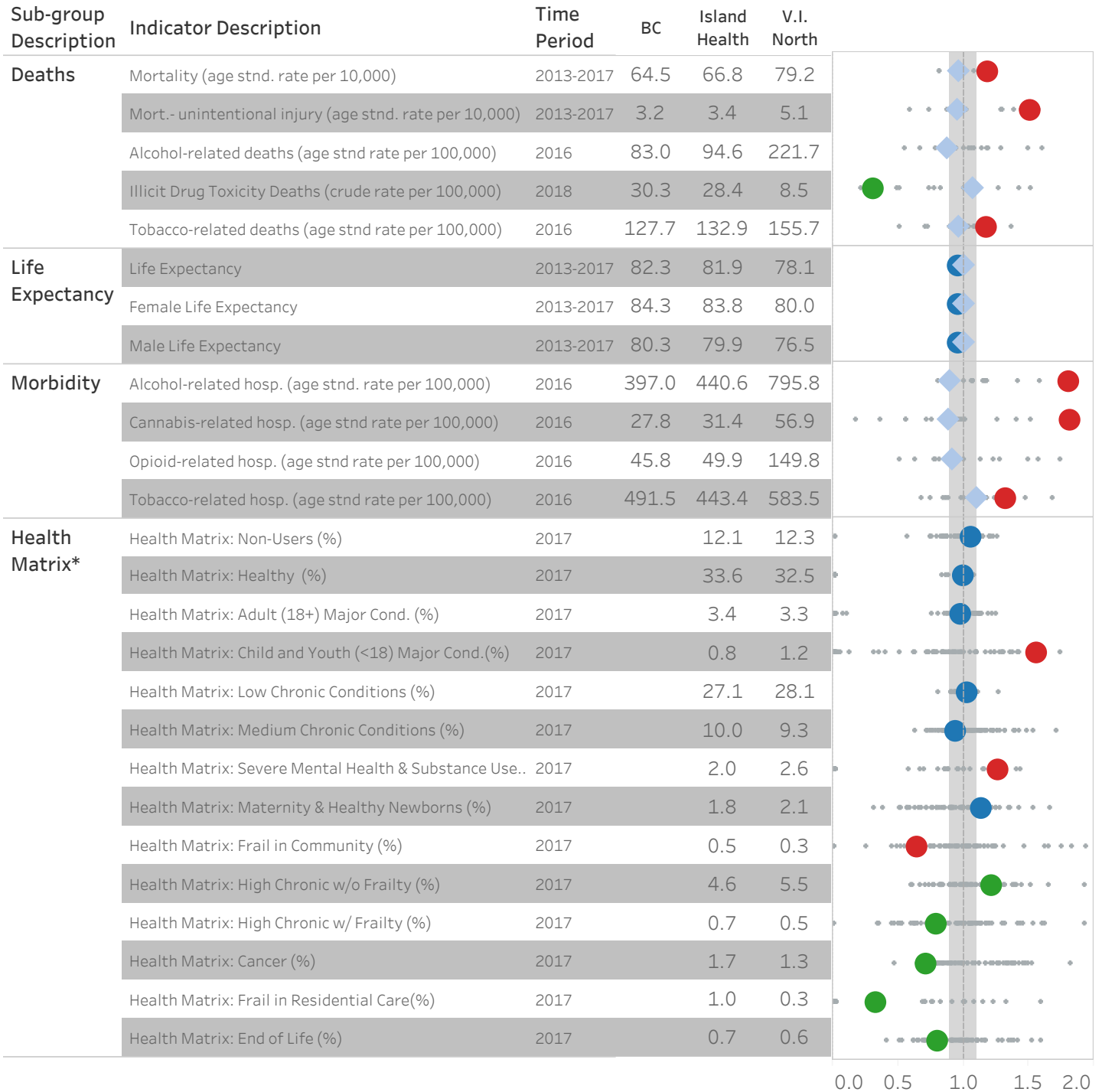
Health Status Summary

Sub-group Description	Indicator Description	Time Period	BC	Island Health	V.I. North
Births	Live Birth Rate (rate per 1,000 population)	2013-2017	9.4	8.3	9.5
	Stillbirths (rate per 1,000 births)	2013-2017	11.4	10.0	10.9
	Infant Mortality - deaths of infants under 1 year of age (rate per 1,000 live births)	2013-2017	3.5	4.0	7.4
	Low Weight Births - less than 2,500 grams (rate per 1,000 live births)	2013-2017	57.8	53.8	59.8
	Cesarean Sections (rate per 1,000 live births)	2013-2017	331.3	291.8	197.5
	Pre-term Births - gestational age less than 37 weeks (rate per 1,000 live births)	2013-2017	77.1	82.7	94.2
	Mothers under 20 - live births to mothers under 20 years of age (rate per 1,000 live births)	2013-2017	17.8	26.2	77.9
	Mothers 35 and over - live births to mothers aged 35 and over (rate per 1,000 live births)	2013-2017	252.9	227.9	163.0
Morbidity	Alzheimer's Disease and Other Dementia - Prevalence (age-standardized rate per 1,000)	2018	20.3	21.3	19.2
	Asthma - Prevalence (age-standardized rate per 1,000)	2018	123.1	130.7	167.1
	Chronic Kidney Disease - Prevalence (age-standardized rate per 1,000)	2018	23.2	22.2	24.4
	Chronic Obstructive Pulmonary Disease - Prevalence (age-standardized rate per 1,000)	2018	51.1	52.5	95.5
	Mood and Anxiety Disorders - Prevalence (age-standardized rate per 1,000)	2018	301.9	342.7	336.1
	Depression - Prevalence (age-standardized rate per 1,000)	2018	246.0	278.3	273.6
	Diabetes - Prevalence (age-standardized rate per 1,000)	2018	80.3	69.5	94.0
	Heart Failure - Prevalence (age-standardized rate per 1,000)	2018	19.4	17.7	32.2
	Hypertension - Prevalence (age-standardized rate per 1,000)	2018	224.7	212.1	250.0
	Ischemic Heart Disease - Prevalence (age-standardized rate per 1,000)	2018	69.4	60.5	80.1
	Osteoarthritis - Prevalence (age-standardized rate per 1,000)	2018	84.9	91.1	105.8
	Episodic Asthma - Prevalence (age-standardized rate per 1,000)	2018	49.9	52.9	65.2
	Episodic Depression - Prevalence (age-standardized rate per 1,000)	2018	72.2	85.8	81.1
	Episodic Mood & Anxiety Disorders - Prevalence (age-standardized rate per 1,000)	2018	101.6	122.1	109.5
	Schizophrenia & Delusional Disorders - Prevalence (age-standardized rate per 1,000)	2018	11.0	11.6	10.6

● LHA
 ● LHA Better than Island Health
 ● LHA Worse than Island Health
 ◆ BC Rate, when available
 Range
 ● Other LHAs
 Island Health Value with ±10%

The chart below shows how various indicators for this LHA compare with the rest of Island Health. This LHA's result for each indicator is shown with a large circle. Green identifies results better than Island Health; red identifies results worse than Island Health. These results do not necessarily reflect statistical significance. Island Health's value is shown by the black dotted line, which is always at the centre of the chart. Light gray shading encompassing small grey circles indicates the range of the other LHA values and the dark gray shading shows ±10% from the Island Health value. This is meant to show the relative magnitude of the LHA compared to Island Health, and in some cases extends beyond the chart display.

Health Status Summary (Continued)

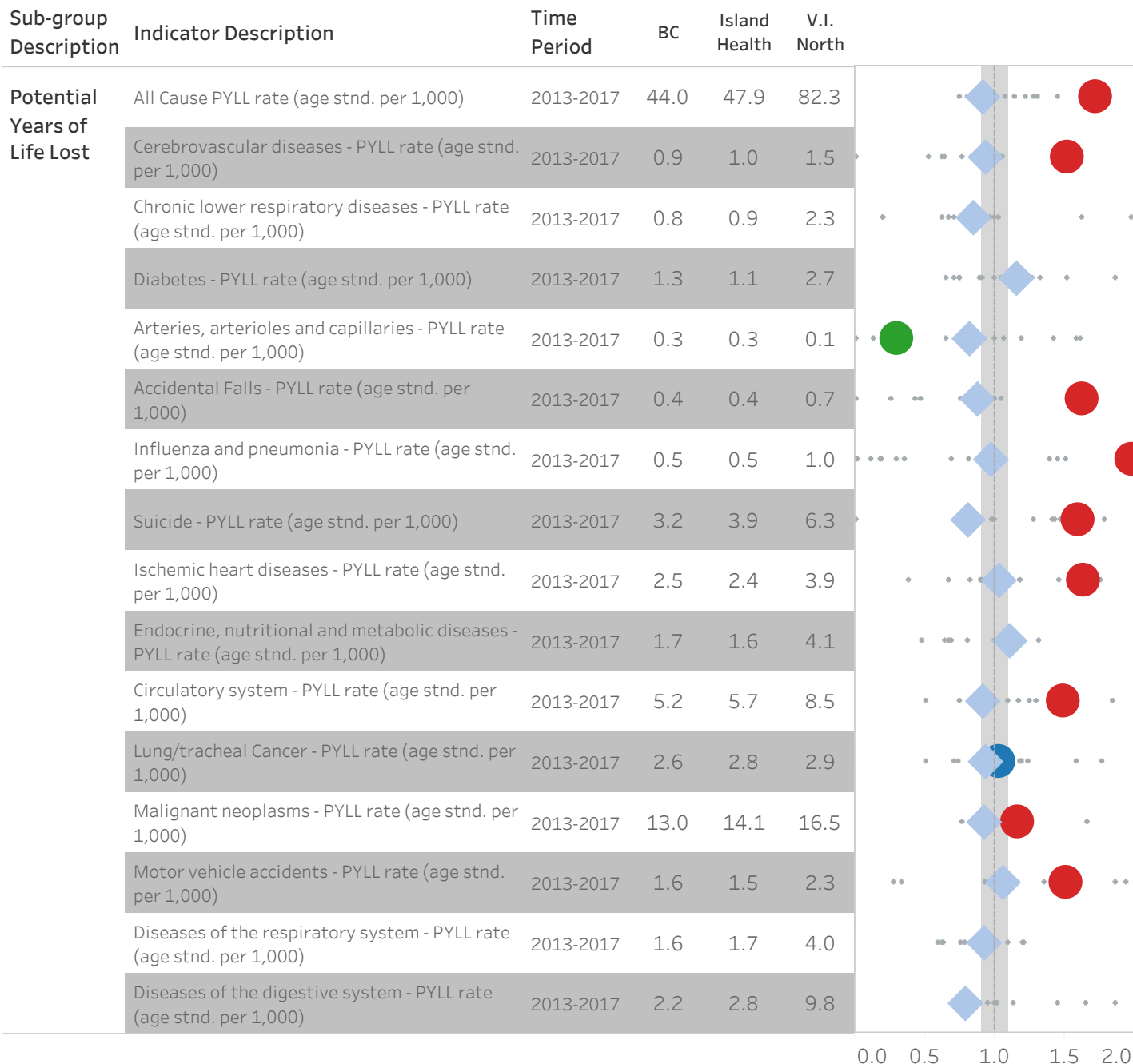


*The Health Matrix is a way of categorizing the population into different groups based on their health service utilization patterns. These categories are mutually exclusive and add up to 100% - in other words, everyone is placed into one of the categories, going from low or no utilization to high utilization at end of life; people who may meet the criteria for more than one category would be placed into the higher utilization category - for example, someone with medium complex chronic conditions who was also living in residential care would be counted in the Frail, Living in Residential Care category. For more information on the Health Matrix, see <https://www2.gov.bc.ca/assets/gov/health/forms/5511datadictionary.pdf>

● LHA
 ● LHA Better than Island Health
 ● LHA Worse than Island Health
 ◆ BC Rate, when available
 Range
 ● Other LHAs
 Island Health Value with ±10%

The chart below shows how various indicators for this LHA compare with the rest of Island Health. This LHA's result for each indicator is shown with a large circle. Green identifies results better than Island Health; red identifies results worse than Island Health. These results do not necessarily reflect statistical significance. Island Health's value is shown by the black dotted line, which is always at the centre of the chart. Light gray shading encompasses small grey circles indicates the range of the other LHA values and the dark gray shading shows ±10% from the Island Health value. This is meant to show the relative magnitude of the LHA compared to Island Health, and in some cases extends beyond the chart display.

⦿ Potential Years of Life Lost (PYLL) from life expectancy of 75 years



● LHA
 ● LHA Better than Island Health
 ● LHA Worse than Island Health
 ◆ BC Rate, when available
 Range
 ● Other LHAs
 Island Health Value with ±10%

The chart below shows how various indicators for this LHA compare with the rest of Island Health. This LHA's result for each indicator is shown with a large circle. Green identifies results better than Island Health; red identifies results worse than Island Health. These results do not necessarily reflect statistical significance. Island Health's value is shown by the black dotted line, which is always at the centre of the chart. Light gray shading encompasses small grey circles indicates the range of the other LHA values and the dark gray shading shows ±10% from the Island Health value. This is meant to show the relative magnitude of the LHA compared to Island Health, and in some cases extends beyond the chart display.

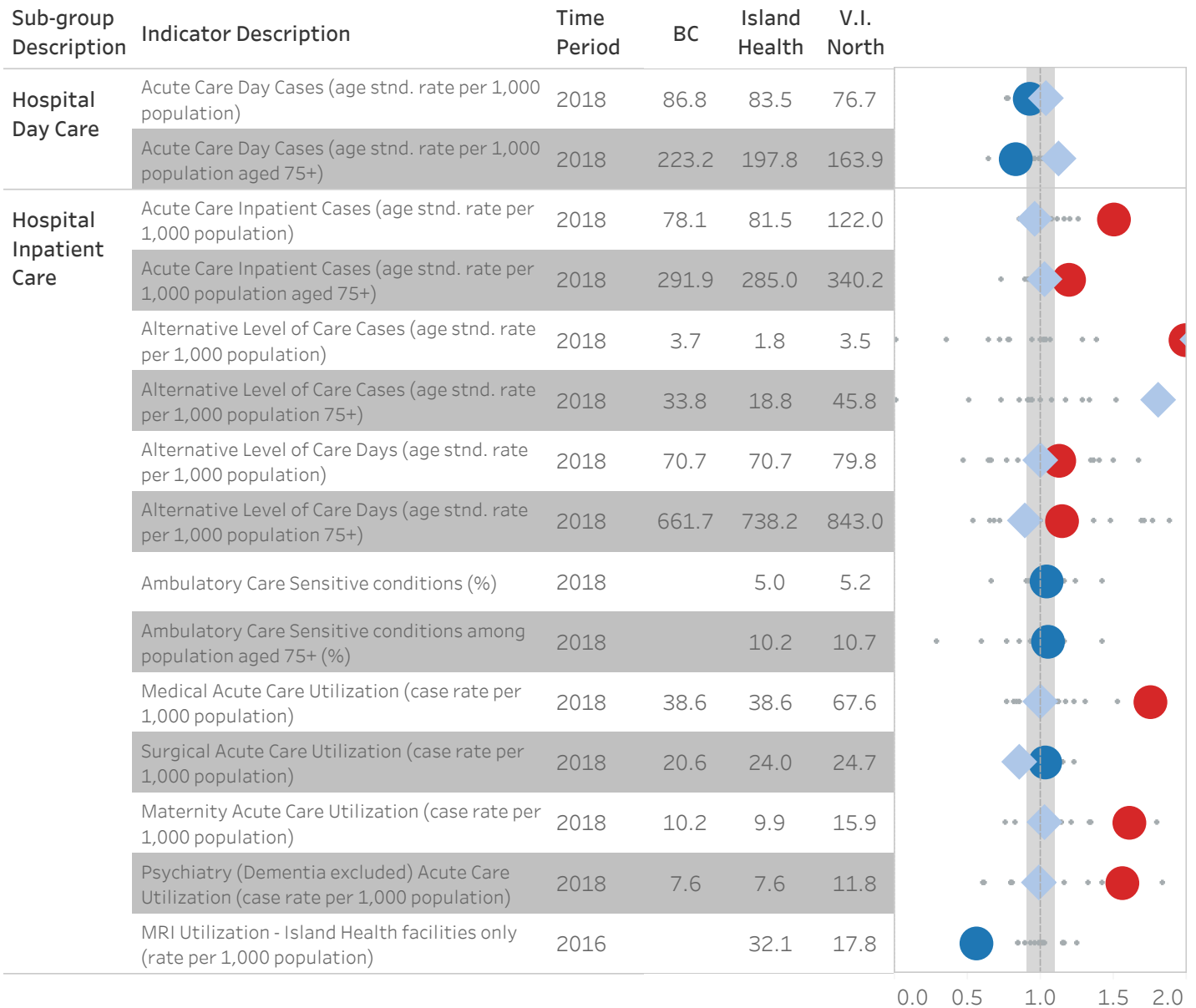
Health Service Use Summary

Sub-group Description	Indicator Description	Time Period	BC	Island Health	V.I. North	
Complex Continuing Care	Home Care Visits (rate per 1,000 population)	2018		475.6	290.1	
	Home Care Visits (rate per 1,000 population aged 75+)	2017		2,477.7	1,228.8	
	Long-Term Care Beds (rate per 1,000 population aged 75+)	2018		69.0	49.0	
	Home Care Clients (rate per 1,000 population)	2017		30.8	37.4	
	Home Care Clients (rate per 1,000 population aged 75+)	2018		187.1	132.2	
	Home Support Clients (rate per 1,000 population)	2017		13.5	7.9	
	Home Support Clients (rate per 1,000 population aged 75+)	2018		94.4	87.6	
	Home Support Hours (rate per 1,000 population)	2018		3,823.2	1,542.7	
	Home Support Hours (rate per 1,000 population aged 75+)	2018		38,580.8	27,995.2	
Emergency	Unscheduled Emergency Dept. or Urgent Care Centre visits (rate per 1,000 pop.)	2018		466.9	952.7	
	Emergency Visits with CTAS of 1, 2 or 3 (%)	2017		67.8	61.9	
	Unscheduled Emergency Dept. or Urgent Care Centre visits (rate per 1,000 75+ pop.)	2018		785.3	1,117.8	
	Emergency Visits with CTAS of 1, 2 or 3 (%) for 75+ population	2017		78.3	75.3	
Hospital Day Care	Acute Care Day Cases (age stnd. rate per 1,000 population)	2018	86.8	83.5	76.7	
	Acute Care Day Cases (age stnd. rate per 1,000 population aged 75+)	2018	223.2	197.8	163.9	
Primary Care	Population Attached to Physician at Practice Level (%)	2017	76.5	78.6	80.3	

● LHA
 ● LHA Better than Island Health
 ● LHA Worse than Island Health
 ◆ BC Rate, when available
 Range
 ● Other LHAs
 Island Health Value with ±10%

The chart below shows how various indicators for this LHA compare with the rest of Island Health. This LHA's result for each indicator is shown with a large circle. Green identifies results better than Island Health; red identifies results worse than Island Health. These results do not necessarily reflect statistical significance. Island Health's value is shown by the black dotted line, which is always at the centre of the chart. Light gray shading encompasses small grey circles indicates the range of the other LHA values and the dark gray shading shows ±10% from the Island Health value. This is meant to show the relative magnitude of the LHA compared to Island Health, and in some cases extends beyond the chart display.

Health Service Use Summary (Continued)



Data Sources

Population and Demographics

Population and Population Projection

Average Age: BC Statistics, 2018 | Population Pyramid: BC Statistics - P.E.O.P.L.E. 2019 | Estimated Total Population - 2039: BC Statistics - P.E.O.P.L.E. 2019 | Estimated Population Change - 2039: BC Statistics - P.E.O.P.L.E. 2019 | 10 Year Population Growth (%): BC Statistics - P.E.O.P.L.E. 2019 | Population aged 0-19 (%) - BC Statistics - P.E.O.P.L.E. 2019 | Population aged 20-44 (%) - BC Statistics - P.E.O.P.L.E. 2019 | Population aged 45-64 (%) - BC Statistics - P.E.O.P.L.E. 2019 | Population aged 65-74(%) - BC Statistics - P.E.O.P.L.E. 2019 | Population aged 75 and over (%) - BC Statistics - P.E.O.P.L.E. 2019 | Percent growth of the 0-19 age group population in next 10 years - BC Statistics - P.E.O.P.L.E. 2019 | Percent growth of the 20-44 age group population in next 10 years - BC Statistics - P.E.O.P.L.E. 2019 | Percent growth of the 45-64 age group population in next 10 years - BC Statistics - P.E.O.P.L.E. 2019 | Percent growth of the 65-74 age group population in next 10 years - BC Statistics - P.E.O.P.L.E. 2019 | Percent growth of the 75+ age group population in next 10 years - BC Statistics - P.E.O.P.L.E. 2019

Age Demographics & Marital Status

Median Age of Population - Census, 2016 | Population where language spoken most often at home is not English or French (%) - Census, 2016 | Visible minority population (%) - Census, 2016 | Population in private households with Aboriginal Identity (%) - Census, 2016 | Population aged 15 and over who are married (%) - Census, 2016 | Population aged 15 and over who are common-law (%) - Census, 2016 | Population aged 15 and over who are single, never married (%) - Census, 2016 | Population aged 15 and over who are widowed (%) - Census, 2016 | Population aged 15 and over who are separated or divorced (%) - Census, 2016

Migration and Immigrants

Immigrant population (%): Census, 2016 | Population migrating to area in the last 5 years (%): Census, 2016

Determinants of Health

Education & Employment

Population aged 25 to 64 with post-secondary certificate, diploma or degree (%) - Census, 2016 | Grade 12 completion among students entering Grade 12 for the first time (%) (2yr Agg) - Ministry of Education, 2017 | Students completing high school within six years of enrollment in Grade 8 (%) (2yr Agg) - Ministry of Education, 2018 | Population aged 15 and over who are unemployed (%): Census, 2016

Health Behaviours

Alcohol consumption (litres of absolute alcohol sold per person, 1L=58 standard drinks)- AOD: CISUR, 2017

Household

Dwellings rated as needing major repairs by renter or owner (%) - Census, 2016 | Lone-parent family households (% of census families with children) - Census, 2016 | Private households that are owner-occupied (%) - Census, 2016 | Private households with 5 or more persons (%) - Census, 2016 | Private households with multiple families (%) - Census, 2016 | Households (owned) spending more than 30% of income on housing (%) - Census, 2016 | Households (rented) spending more than 30% of income on housing (%) - Census, 2016

Income & Income Inequality

Median household total income (\$) - Census, 2016 | Median lone-parent family income (\$) - Census, 2016 | Difference in median income comparing males and females aged 15 and over - Census, 2016 | Households (owned) spending more than 30% of income on housing (%) - Census, 2016 | Households (rented) spending more than 30% of income on housing (%) - Census, 2016 | Low income based on after-tax low income measure (%) - Census, 2016 | Low income based on after-tax low-income measure, ages 18 to 64 years (%) - Census, 2016 | Low income based on after-tax low-income measure, ages 65 years and over (%) - Census, 2016 | Low income based on after-tax low-income measure, ages less than 6 years (%) - Census, 2016 | Low income based on after-tax low-income measure, ages less than 18 years (%) - Census, 2016

Data Sources

Determinants of Health

Morbidity

Alcohol-related hospitalizations (age-standardized rate per 100,000) - CISUR, 2016 | Cannabis-related hospitalizations (age-standardized rate per 100,000) - CISUR, 2016 | Opioid-related hospitalizations (age-standardized rate per 100,000) - CISUR, 2016 | Tobacco-related hospitalizations (age-standardized rate per 100,000) - CISUR, 2016

Transportation

Employed population aged 15 and over walking, biking or using to work (%) - Census, 2016

Child Health

Child hospitalizations - Dental Surgery (rate per 1,000 aged 0 to 14) -(2yr Agg): Ministry of Health Health Ideas, 2016-2018 | Child Hospitalizations - Injury/Poisoning (rate per 1,000 aged 0 to 14) - (2yr Agg): Ministry of Health Health Ideas, 2016-2018 | Child hospitalizations - Respiratory Dis. (rate per 1,000 aged 0 to 14) - (2yr Agg): Ministry of Health Health Ideas, 2016-2018 | Child Mental Diseases & Disorders Hospitalizations (Indirect Age Standardized rate per 1,000 aged 0-14): Ministry of Health Health Ideas, 2018 | Child/Youth Mental Diseases & Disorders Hospitalizations (Indirect Age Standardized rate per 1,000 aged 15-24): Ministry of Health Health Ideas, 2018

Early Development

EDI: Kindergarten children rated as vulnerable for social development (%) - Early Development Instrument, 2016 | EDI: Kindergarten children rated as vulnerable for communication development (%) - Early Development Instrument, 2016 | EDI: Kindergarten children rated as vulnerable for emotional development (%) - Early Development Instrument, 2016 | EDI: Kindergarten children rated as vulnerable for language development (%) - Early Development Instrument, 2016 | EDI: Kindergarten children rated as vulnerable for physical development (%) - Early Development Instrument, 2016 | EDI: Kindergarten children rated as vulnerable on one or more domains (%) - Early Development Instrument, 2016 | EDI: Kindergarten children rated as vulnerable on one or more domains, excluding communication (%) - Early Development Instrument, 2016

Protecting Children and Youth

Children and Youth in Care (rate per 1,000 children aged 0 to 18) - Ministry of Children and Family Development, 2018 | Children and Youth in Need of Protection (rate per 1,000 children aged 0 to 18) - Ministry of Children and Family Development, 2017

Health Status

Life Expectancy

Female Life Expectancy - BC Statistics, 2017 | Male Life Expectancy - BC Statistics, 2017 | Life Expectancy - BC Statistics, 2017

Deaths

Mortality (age-standardized rate per 10,000) - Vital Statistics, 2017 | Mortality due to unintentional injuries (age-standardized rate per 10,000) - Vital Statistics, 2017 | Alcohol-related deaths (age-standardized rate per 100,000) - CISUR, 2016 | Tobacco-related deaths (age-standardized rate per 100,000) - CISUR, 2016 | Illicit Drug Toxicity Deaths (crude rate per 100,000) - BC Coroner's Service, 2018

Health Matrix

Health Matrix: Healthy (%) - Blue Matrix and People, 2017 | Health Matrix: Adult (18+) Major Conditions (%) - Blue Matrix and People, 2017 | Health Matrix: Child and Youth (<18) Major Conditions (%) - Blue Matrix and People, 2017 | Health Matrix: Low Chronic Conditions (%) - Blue Matrix and People, 2017 | Health Matrix: Medium Chronic Conditions (%) - Blue Matrix and People, 2017 | Health Matrix: Severe Mental Health & Substance Use (%) - Blue Matrix and People, 2017 | Health Matrix: Maternity & Healthy Newborns (%) - Blue Matrix and People, 2017 | Health Matrix: Frail in Community (%) - Blue Matrix and People, 2017 | Health Matrix: High Chronic w/o Frailty (%) - Blue Matrix and People, 2017 | Health Matrix: High Chronic w/ Frailty (%) - Blue Matrix and People, 2017 | Health Matrix: Cancer (%) - Blue Matrix and People, 2017 | Health Matrix: Frail in Residential Care (%) - Blue Matrix and People, 2017 | Health Matrix: End of Life (%) - Blue Matrix and People, 2017

Data Sources

Health Status

Births

Live Birth Rate (rate per 1,000 population) - Vital Statistics, 2017 | Stillbirths (rate per 1,000 births) - Vital Statistics, 2017 | Infant Mortality - deaths of infants under 1 year of age (rate per 1,000 live births) - Vital Statistics, 2017 | Low Weight Births - less than 2,500 grams (rate per 1,000 live births) - Vital Statistics, 2017 | Cesarean Sections (rate per 1,000 live births) - Vital Statistics, 2017 | Pre-term Births - gestational age less than 37 weeks (rate per 1,000 live births) - Vital Statistics, 2017 | Mothers under 20 - live births to mothers under 20 years of age (rate per 1,000 live births) - Vital Statistics, 2017 | Mothers 35 and over - live births to mothers aged 35 and over (rate per 1,000 live births) - Vital Statistics, 2017

Morbidity

Alzheimer's Disease and Other Dementia - Prevalence (age-standardized rate per 1,000) - MoH - Chronic Disease Registries, 2018 | Asthma - Prevalence (age-standardized rate per 1,000) - MoH - Chronic Disease Registries, 2018 | Chronic Kidney Disease - Prevalence (age-standardized rate per 1,000) - MoH - Chronic Disease Registries, 2018 | Chronic Obstructive Pulmonary Disease - Prevalence (age-standardized rate per 1,000) - MoH - Chronic Disease Registries, 2018 | Mood and Anxiety Disorders - Prevalence (age-standardized rate per 1,000) - MoH - Chronic Disease Registries, 2018 | Depression - Prevalence (age-standardized rate per 1,000) - MoH - Chronic Disease Registries, 2018 | Diabetes - Prevalence (age-standardized rate per 1,000) - MoH - Chronic Disease Registries, 2018 | Heart Failure - Prevalence (age-standardized rate per 1,000) - MoH - Chronic Disease Registries, 2018 | Hypertension - Prevalence (age-standardized rate per 1,000) - MoH - Chronic Disease Registries, 2018 | Ischemic Heart Disease - Prevalence (age-standardized rate per 1,000) - MoH - Chronic Disease Registries, 2018 | Osteoarthritis - Prevalence (age-standardized rate per 1,000) - MoH - Chronic Disease Registries, 2018 | Episodic Asthma - Prevalence (age-standardized rate per 1,000) - MoH - Chronic Disease Registries, 2018 | Episodic Depression - Prevalence (age-standardized rate per 1,000) - MoH - Chronic Disease Registries, 2018 | Episodic Mood & Anxiety Disorders - Prevalence (age-standardized rate per 1,000) - MoH - Chronic Disease Registries, 2018 | Schizophrenia & Delusional Disorders - Prevalence (age-standardized rate per 1,000) - MoH - Chronic Disease Registries, 2018

Complex Continuing Care

Home Care Visits (rate per 1,000 population) - Island Health - Ideas, 2018 | Home Care Visits (rate per 1,000 population aged 75 and over) - Island Health - Ideas, 2017 | Long-Term Care Beds (rate per 1,000 population aged 75 and over) - Island Health - Ideas, 2018 | Home Care Clients (rate per 1,000 population) - Island Health - Ideas, 2017 | Home Care Clients (rate per 1,000 population aged 75 and over) - Island Health - Ideas, 2018 | Home Support Clients (rate per 1,000 population) - Island Health - Ideas, 2017 | Home Support Clients (rate per 1,000 population aged 75 and over) - Island Health - Ideas, 2018 | Home Support Hours (rate per 1,000 population) - Island Health - Ideas, 2018 | Home Support Hours (rate per 1,000 population aged 75 and over) - Island Health - Ideas, 2018

Emergency

Unscheduled Emergency Department or Urgent Care Centre visits (rate per 1,000 population) - Island Health - Ideas, 2018 | Emergency Visits with CTAS of 1, 2 or 3 (%) - Island Health - Ideas, 2017 | Unscheduled Emergency Department or Urgent Care Centre visits for 75+ (rate per 1,000 75+ population) - Island Health - Ideas, 2018 | Emergency Visits with CTAS of 1, 2 or 3 (%) for 75+ population - Island Health - Ideas, 2017

Hospital Day Care

Acute Care Day Cases (age-standardized rate per 1,000 population) - Ministry of Health Health Ideas, 2018 | Acute Care Day Cases (age-standardized rate per 1,000 population aged 75 and over) - Ministry of Health Health Ideas, 2018

Primary Care

Population attached to physician at the practice level (%) - Ministry of Health, 2017

Data Sources

Health Status

Potential Years of Life Lost

Accidental Falls - Potential Years of Life Lost rate (age standardized per 1,000): Vital Statistics, Calendar year ending 2013-2017 | All Cause Potential Years of Life Lost rate (age standardized per 1,000): Vital Statistics, Calendar year ending 2013-2017 | Arteries, arterioles and capillaries - Potential Years of Life Lost rate (age standardized per 1,000): Vital Statistics, Calendar year ending 2013-2017 | Cerebrovascular diseases - Potential Years of Life Lost rate (age standardized per 1,000): Vital Statistics, Calendar year ending 2013-2017 | Chronic lower respiratory diseases - Potential Years of Life Lost rate (age standardized per 1,000): Vital Statistics, Calendar year ending 2013-2017 | Circulatory system - Potential Years of Life Lost rate (age standardized per 1,000): Vital Statistics, Calendar year ending 2013-2017 | Diabetes - Potential Years of Life Lost rate (age standardized per 1,000): Vital Statistics, Calendar year ending 2013-2017 | Diseases of the digestive system - Potential Years of Life Lost rate (age standardized per 1,000): Vital Statistics, Calendar year ending 2013-2017 | Diseases of the respiratory system - Potential Years of Life Lost rate (age standardized per 1,000): Vital Statistics, Calendar year ending 2013-2017 | Endocrine, nutritional and metabolic diseases - Potential Years of Life Lost rate (age standardized per 1,000): Vital Statistics, Calendar year ending 2013-2017 | Influenza and pneumonia - Potential Years of Life Lost rate (age standardized per 1,000): Vital Statistics, Calendar year ending 2013-2017 | Ischemic heart diseases - Potential Years of Life Lost rate (age standardized per 1,000): Vital Statistics, Calendar year ending 2013-2017 | Lung/tracheal Cancer - Potential Years of Life Lost rate (age standardized per 1,000): Vital Statistics, Calendar year ending 2013-2017 | Malignant neoplasms - Potential Years of Life Lost rate (age standardized per 1,000): Vital Statistics, Calendar year ending 2013-2017 | Motor vehicle accidents - Potential Years of Life Lost rate (age standardized per 1,000): Vital Statistics, Calendar year ending 2013-2017 | Suicide - Potential Years of Life Lost rate (age standardized per 1,000): Vital Statistics, Calendar year ending 2013-2017

Hospital Inpatient Care

Acute Care Inpatient Cases (age-standardized rate per 1,000 population) - Ministry of Health Health Ideas, 2018 | Acute Care Inpatient Cases (age-standardized rate per 1,000 population aged 75 and over) - Ministry of Health Health Ideas, 2018 | Alternative Level of Care Cases (age-standardized rate per 1,000 population) - Ministry of Health Health Ideas, 2018 | Alternative Level of Care Cases (age-standardized rate per 1,000 population aged 75 and over) - Ministry of Health Health Ideas, 2018 | Alternative Level of Care Days (age-standardized rate per 1,000 population) - Ministry of Health Health Ideas, 2018 | Alternative Level of Care Days (age-standardized rate per 1,000 population aged 75 and over) - Ministry of Health Health Ideas, 2018 | Ambulatory Care Sensitive conditions (%) - Island Health - Ideas, 2018 | Ambulatory Care Sensitive conditions among population aged 75+ (%) - Island Health - Ideas, 2018 | Medical Acute Care Utilization (case rate per 1,000 population) - Ministry of Health Health Ideas, 2018 | Surgical Acute Care Utilization (case rate per 1,000 population) - Ministry of Health Health Ideas, 2018 | Maternity Acute Care Utilization (case rate per 1,000 population) - Ministry of Health Health Ideas, 2018 | Psychiatry (Dementia excluded) Acute Care Utilization (case rate per 1,000 population) - Ministry of Health Health Ideas, 2018 | MRI Utilization - Island Health facilities only (rate per 1,000 population) - Island Health, 2016